

# McGill™ 4125/90 Series Single Pole Toggle Switches

NEC/CEC:  
Listed for Ordinary Locations

## Applications

- McGill™ full-size, single pole toggle switches are available in several electrical ratings to meet a variety of requirements.
- Ruggedly constructed with metallic toggle and threaded bushing to ensure extended service life.
- Marine, food service, generator, industrial control and office automation markets.
- Appropriate for use in low voltage DC applications.

## Features

- A variety of circuits are available.
- Available with screw, solder, and 1/4" Quick connect terminals.
- Mounting hardware and terminal screws (where applicable) furnished unassembled.
- Mounting hardware consists of nickel plated hex nut and knurled nut.
- Indicating plate is furnished for maintained ON-OFF circuits.

## Standard Materials

- Base: phenolic +150 °C (+302 °F)
- Bat handle: nickel plated brass
- Bushing: nickel plated brass

## NEC/CEC Certifications and Compliances

- UL Recognized Component
- UL File Number: E335442
- UL Standard: 1054, Guide WORY2
- CSA File Number: 249055
- CSA Standard: C22.2 No. 55
- RoHS Compliant



REELS AND SWITCHES: ORDINARY LOCATION SWITCHES

Apletton® OZGEDNEY

Circuitry			Screw Term.			Solder Term.		
A	B	C	Poles	Catalog Number	Rating	Poles	Catalog Number	Rating
<b>10 Amp</b>								
ON	—	OFF	SPST	<b>4125-0001N</b>	10 Amp, 125 Vac/Vdc 5 Amp, 250 Vac/Vdc 1/4 HP, 125 Vac/Vdc	SPST	<b>4125-0002N</b>	10 Amp, 125 Vac/Vdc 5 Amp, 250 Vac/Vdc 1/4 HP, 125 Vac/Vdc
<b>15 Amp</b>								
ON	OFF	ON	SPDT	<b>91-0001N</b>	15 Amp, 125 Vac 10 Amp, 250 Vac 3/4 HP, 120-240 Vac	SPDT	<b>91-0002N</b>	15 Amp, 125 Vac 10 Amp, 250 Vac 3/4 HP, 120-240 Vac
ON	—	ON	SPDT	<b>92-0001N</b>		SPDT	<b>92-0002N</b>	
(ON)	OFF	(ON)	SPDT	<b>93-0001N</b>		SPDT	<b>93-0002N</b>	
ON	OFF	(ON)	SPDT	<b>93-1001N</b>		SPDT	<b>93-1002N</b>	
(OFF)	—	ON	SPST	<b>93-2001N</b>		SPST	<b>93-2002N</b>	
(ON)	—	OFF	SPST	<b>93-3001N</b>		SPST	<b>93-3002N</b>	
ON	—	(ON)	SPDT	<b>93-4001N</b>	SPDT	<b>93-4002N</b>		
<b>20 Amp</b>								
ON	—	OFF	SPST	<b>90-0001N</b>	20 Amp, 125 Vac 12 Amp, 250 Vac 1 HP, 120-240 Vac	SPST	<b>90-0002N</b>	20 Amp, 125 Vac 12 Amp, 250 Vac 1 HP, 120-240 Vac

( ) Momentary. Poles: SP = single pole, DP = double pole, ST = single throw, DT = double throw.

Shaded catalog numbers are normally stocked items. All other items are made to order. Contact your local sales representative for pricing.

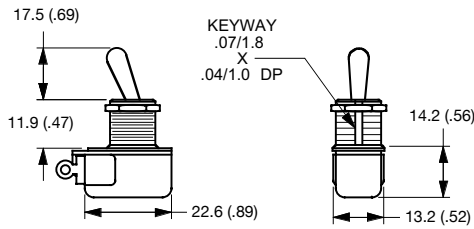
# McGill™ 4125/90 Series Single Pole Toggle Switches

NEC/CEC:  
Listed for Ordinary Locations

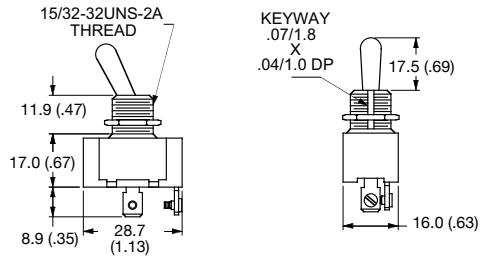
REELS AND SWITCHES: ORDINARY LOCATION SWITCHES

Circuitry			1/4" Q.C. Term.			6" Wire Leads		
A	B	C	Poles	Catalog Number	Rating	Poles	Catalog Number	Rating
<b>10 Amp</b>								
ON	—	OFF	SPST	<b>4125-0003N</b>	10 Amp, 125 Vac/Vdc 5 Amp, 250 Vac/Vdc 1/4 HP, 125 Vac/Vdc	SPST	<b>4125-0004N</b>	10 Amp, 125 Vac/Vdc 5 Amp, 250 Vac/Vdc 1/4 HP, 125 Vac/Vdc
<b>15 Amp</b>								
ON	OFF	ON	SPDT	<b>91-0003N</b>		—	—	—
ON	—	ON	SPDT	<b>92-0003N</b>		—	—	—
(ON)	OFF	(ON)	SPDT	<b>93-0003N</b>	15 Amp, 125 Vac	—	—	—
ON	OFF	(ON)	SPDT	<b>93-1003N</b>	10 Amp, 250 Vac	—	—	—
(OFF)	—	ON	SPST	<b>93-2003N</b>	3/4 HP, 120-240 Vac	—	—	—
(ON)	—	OFF	SPST	<b>93-3003N</b>		—	—	—
ON	—	(ON)	SPDT	<b>93-4003N</b>		—	—	—
<b>20 Amp</b>								
ON	—	OFF	SPST	<b>90-0003N</b>	20 Amp, 125 Vac 12 Amp, 250 Vac 1 HP, 120-240 Vac	—	—	—

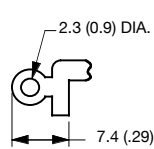
## Dimensions in Millimeters (Inches)



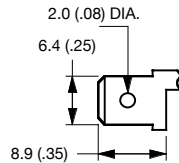
10 Amp Toggle Switch



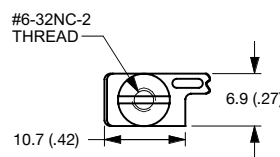
15 & 20 Amp Toggle Switch



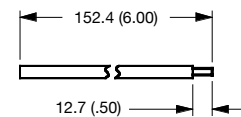
10 Amp Solder Lug Terminal



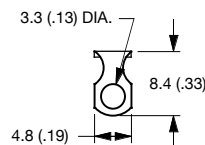
10 Amp 1/4" Q.C. Terminal



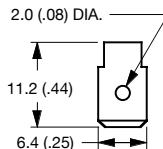
10 Amp Screw Terminal



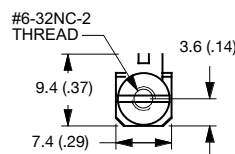
10 Amp Integrated Wire Lead Terminal



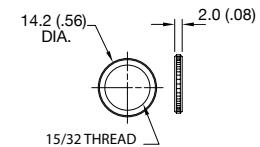
15 & 20 Amp Solder Lug Terminal



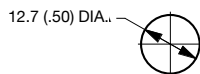
15 & 20 Amp 1/4" Q.C. Terminal



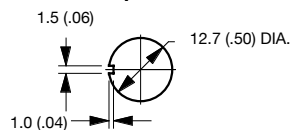
15 & 20 Amp Screw Terminal



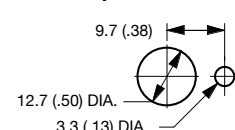
Knurled Nut



Mounting Hole



Mounting Hole With Keyway



Mounting Hole With Locking Ring

( ) Momentary. Poles: SP = single pole, DP = double pole, ST = single throw, DT = double throw.

Shaded catalog numbers are normally stocked items. All other items are made to order. Contact your local sales representative for pricing.