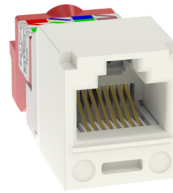


# Mini-Com® TX5e™ UTP Jack Module

## specifications

Category 5e/Class D, 8-position, UTP jack module shall terminate solid, 4-pair, 24 – 22 AWG, 100 ohm unshielded twisted pair cable and shall not require a punchdown tool. UTP jack modules shall use a forward motion termination method to optimize performance by maintaining cable pair geometry while eliminating conductor untwist. The termination cap shall be color coded red to designate Category 5e performance and shall include a universal label coded for T568A and T568B wiring schemes.



## technical information

<b>Category 5e/Class D channel and component performance:</b>	Exceeds channel requirements of ANSI/TIA-568.2-D Category 5e and ISO 11801 Class D standards at swept frequencies 1 to 100 MHz Exceeds component requirements of ANSI/TIA-568.2-D Category 5e and ISO 11801 Class D standards at swept frequencies 1 to 100 MHz
<b>FCC and ANSI compliance:</b>	Meets ANSI/TIA-1096-A; contacts plated with 50 microinches of gold for superior performance
<b>PoE and PoH compliance:</b>	Meets IEEE 802.3af/802.3at and 802.3bt type 3 and type 4 Supports Power over HDBaseT up to 100 watts
<b>c(UL)us Listed:</b>	UL 1863 (Use as communications circuit accessory); CSA standard C22.2
<b>Conductor termination range:</b>	Wire cap compatible with 24 – 22 AWG solid cable with conductor insulation diameters of 0.035 in. to 0.048 in. and overall cable O.D. 0.200 in. to 0.250 in.
<b>Operating temperature:</b>	-10°C to 60°C (14°F to 140°F)

## key features and benefits

<b>100% performance tested</b>	Confidence that each jack module will deliver the critical electrical performance requirements
<b>Utilizes enhanced Giga-TX™ Technology</b>	Optimizes performance by eliminating conductor untwist and reduces installation time and expense
<b>Improved termination cap</b>	Conductor retention slots simplify jack module termination
<b>Modular</b>	UTP jack modules snap in and out of all Mini-Com Faceplates, Modular Patch Panels and Surface Mount Boxes for easy moves, adds, and changes
<b>True strain relief</b>	Controls cable bend radius for long term installed performance
<b>Individually serialized</b>	Marked with quality control number for future traceability
<b>RJ45 interface</b>	Industry standard interface provides a quick and easy plug and play connection to RJ45 patch cords
<b>Identification</b>	Can be clearly identified with optional labels and icons for port identification
<b>Termination tools (optional)</b>	CGJT termination tool ensures conductors are fully terminated by utilizing a smooth forward motion without impact on critical internal components for maximum reliability
<b>Block out device (optional)</b>	Provides a simple and secure method to control access to data ports while not in use

## applications

Mini-Com TX5e UTP Jack Modules are a component of the TX5500™ UTP Copper Cabling System. This end-to-end system provides Gigabit Ethernet performance with usable bandwidth beyond 100 MHz. With certified performance to the ANSI/TIA-568.2-D Category 5e and ISO 11801 Class D standards, this system will support the following applications:

- Ethernet 10BASE-T, 100BASE-T (Fast Ethernet), 1000BASE-T (Gigabit Ethernet)
- Voice/data systems
- Voice over Internet Protocol (VoIP)

### Mini-Com TX5e UTP Jack Module

**Jack module:** CJ5E88TIW\*

### Mini-Com Angled Modular Patch Panels

**24-port, 1 RU:** CPPLA24WBLY

**48-port, 2 RU:** CPPLA48WBLY

### Mini-Com Flat Modular Patch Panels

**24-port, 1 RU:** CPPL24WBLY

**48-port, 2 RU:** CPPL48WBLY

For additional modular and punchdown patch panels, visit [www.panduit.com](http://www.panduit.com).

### Tools and Accessories

<b>Jack module</b>	
<b>termination tool:</b>	CGJT
<b>Wire snipping tool:</b>	CWST
<b>Wire snipping tool:</b>	CJAST
<b>Clear dust cap:</b>	MDC-C
<b>Blockout device:</b>	PSL-DCJB-^^^
<b>Phone icons:</b>	CIPW-C
<b>Data icons:</b>	CIDWH-C+

\*To designate color other than IW (Off White), replace IW suffix with EI (Electric Ivory), IG (International Gray), WH (White), AW (Arctic White), BL (Black), BU (Blue), RD (Red), YL (Yellow), GR (Green), OR (Orange), VL (Violet).

^^^To designate color other than Red, add suffix BL (Black), BU (Blue), YL (Yellow), GR (Green), OR (Orange), IW (Off White) or IG (International Gray) at end of the part number. 10/package.

+To designate color other than WH (White), replace WH with BU (Blue), RD (Red), YL (Yellow), GR (Green), OR (Orange) in the part number. 100/package.

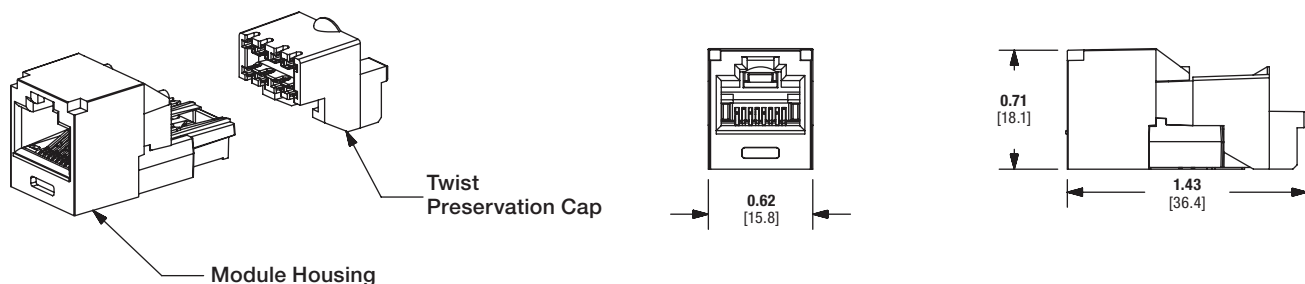
# Mini-Com® TX5e™ UTP Jack Module

## test results

Mechanical Test	Test Method	Measurement	Typical Test Results
Normal Force	ANSI/TIA-1096-A	Load (grams)	> 100
Vibration	IEC 512-6d	Circuit Resistance (mOhms)	< 40
Shock	IEC 512-6c	Contact Disturbance (microseconds)	< 5
Durability	IEC 512-9a	Circuit Resistance (mOhms)	< 40
Mating/Unmating	IEC 512-13b	Mating Force (N)	< 20
		Unmating Force (N)	< 20
Mating Cycles	IEC 60603-7	Number of plug insertions	> 2500

Electrical Test	Test Method	Measurement	Typical Test Results
Low Level Circuit Resistance	IEC 512-2a	Resistance (mOhms)	< 20
Dielectric Withstand Voltage	IEC 512-4a	1000 VAC, 1 minute	Passed
Insulation Resistance	IEC 512-3a	Resistance (MOhms)	> 500

Environmental Test	Test Method	Measurement	Typical Test Results
<i>Temperature Life</i>	IEC 512-9b	Circuit Resistance Change (mOhms)	< 40
<i>Humidity</i>	IEC 512-11c	Circuit Resistance Change (mOhms)	< 40
<i>Thermal Shock</i>	IEC 512-11d	Circuit Resistance Change (mOhms)	< 40
<i>Climactic Sequence</i>	IEC 512-11a	Circuit Resistance Change (mOhms)	< 40
<i>Flowing Mixed Gas Corrosion</i>	IEC 512-11g	Circuit Resistance Change (mOhms)	< 40



**Dimensions are in inches.** [Dimensions in **brackets** are metric].

## WORLDWIDE SUBSIDIARIES AND SALES OFFICES

**PANDUIT US/CANADA**  
**Phone: 800.777.3300**

**PANDUIT EUROPE LTD.**  
London, UK  
Phone: 44.20.8601.7200

**PANDUIT SINGAPORE PTE. LTD.**  
 Republic of Singapore  
 Phone: 65.6305.7575

PANDUIT JAPAN  
Tokyo, Japan  
Phone: 81.3.6863.6000

**PANDUIT LATIN AMERICA**  
Guadalajara, Mexico  
Phone: 52.33.3777.6000

**PANDUIT AUSTRALIA PTY. LTD.**  
Victoria, Australia  
Phone: 61.3.9794.9020

For a copy of Panduit product warranties, log on to [www.panduit.com/warranty](http://www.panduit.com/warranty)

**For more information**

**Visit us at [www.panduit.com](http://www.panduit.com)**  
Contact Customer Service by email: [cs@panduit.com](mailto:cs@panduit.com)  
or by phone: 800.777.3300

© 2022 Panduit Corp.  
ALL RIGHTS RESERVED.  
COSP253-WW-ENG  
9/2022

**PANDUIT®**