

Straight Blade Devices

15A, 250V, 2 Pole, 3 Wire Grounding

HBL® Extra Heavy Duty, Specification Grade, Duplex Receptacle

HUBBELL

Features

- Triangle marking on face indicates isolated ground
- Slender/compact design
- Finder Groove Face
- Reduces installation time
- Fully insulated design

Ordering Information

Description	Device Color	UPC	Catalog Number
Isolated ground, back	Orange	783585778556	IG5662

Listings

UL Listed to UL498 File No. E2186
Certified to CSA, C22.2, No. 42 File 285
NEMA® WD-6 Compliant
NEMA® WD-6 Compliant

Specifications

Face	Nylon
Base	PBT
Mounting Strap	.040" (1) Galvanized steel
Automatic Self-grounding Clip	Stainless steel
Ground Contact	.031" (.8) Brass
Clamp	Nickel plated steel
Ground Contact	.031 in. (.8) Brass
Terminal Screws	Brass
Mounting Screws	Stainless Steel

Performance

Electrical

Current Interrupting	Certified for current interrupting at full rated current
Dielectric Voltage	Withstands 2,000V minimum

Mechanical

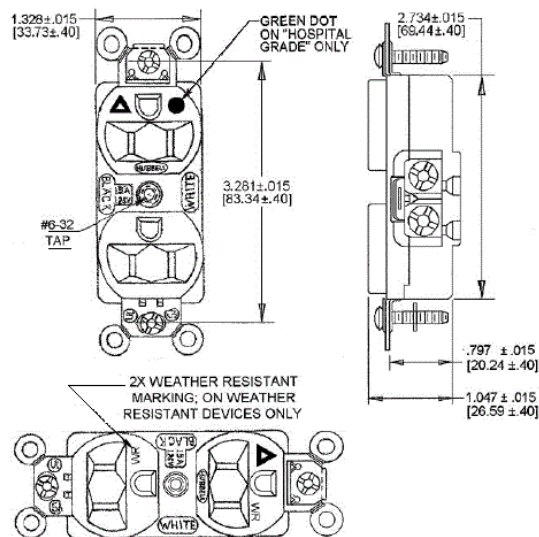
Product Identification	Ratings are a permanent part of the device
Terminal Accommodation	#14-#10 AWG copper stranded or solid conductor only
Terminal Identification	Terminals identified in accordance with UL 498 and CSA

Environmental

Flammability	UL 94 V-2 or better
Operating Temperatures	Maximum continuous 75°C; minimum -40°C (w/o impact)



15A 250V
NEMA 6-15R
UL CSA
1.5 HP



Online Resources

Customer Use Drawing
eCatalog
Installation Instructions

Accessories

Wallplate or Weatherproof Cover

Duplex Openin

Dimensions in Inches (mm)

Hubbell Wiring Device-Kellems • Hubbell Incorporated (Delaware) • 40 Waterview Drive • Shelton, CT 06484

Phone (800) 288-6000 • Fax (800) 255-1031 • Specifications subject to change without notice.

