

# Mini-Com® Flush Mount Modular Patch Panels

## SPECIFICATIONS

Flush mount modular patch panels shall consist of a metal panels with molded rear snap-in faceplates. Patch Panels shall accept all Mini-Com Modules for UTP, fiber or A/V applications and shall mount to standard 19" racks. Patch panels shall be available in 24-port and 48-port standard density. Select styles shall be available in white. Flush mount patch panels shall be easy to identify with pre-numbered ports. Angled patch panels shall be designed at an optimum angle to help route the cable.



## TECHNICAL INFORMATION

<b>Mounting options:</b>	Mounts to standard 19" rack
<b>Material:</b>	Stamping is CRS and faceplate is ABS
<b>Packaging:</b>	Packaged with appropriate pre-installed snap in faceplates and a set of mounting screws (#12-24)

## KEY FEATURES AND BENEFITS

<b>Modular:</b>	Accepts all Panduit Mini-Com® Modules to mix and match media types in the same panel
<b>Angled design:</b>	Minimize the need for horizontal cable managers by enabling patch cords to be routed directly into vertical cable managers which leads to increase closet density
<b>Port and panel identification:</b>	Pre-numbered ports with write on areas
<b>Optional strain relief bars:</b>	To help support and manage cables
<b>Optional filler panels:</b>	Flat and angled design fill unused rack openings to provide a clean and consistent look when used with any version of Panduit patch panels
<b>Optional extender bracket:</b>	Allows 19" patch panels to be mounted on a 23" rack

## APPLICATIONS

Mini-Com Flush Mount Modular Patch Panels are ideal for multi-media applications; they accept all Mini-Com Modules. Flat and angled designs in various port densities available to fit most needs, include pre-numbered port identification. Angled patch panels are available for applications in which rack space is limited. The design allows cable to flow to each side of the rack, minimizing the need for horizontal cable managers and increasing the density of the rack space. Flush mount patch panels can mount on a standard 19" rack or a 23" rack when using the extender brackets PEB1 or PEB2.

### Flat Style with ports grouped in 4

<b>24-port, 1 RU:</b>	<a href="#">CPP24FMW*</a>
<b>48-port, 2 RU:</b>	<a href="#">CPP48FMW*</a>
<b>48-port, 2 RU:</b>	<a href="#">CPP48FMVNSWBLY</a>

### Angled Style with ports grouped in 4

<b>24-port, 1 RU:</b>	<a href="#">CPPA24FMW*</a>
<b>48-port, 2 RU:</b>	<a href="#">CPPA48FMW*</a>

### Flat Style with ports grouped in 6

<b>48-port, 2 RU:</b>	<a href="#">CPP24FM6BL</a>
-----------------------	----------------------------

### Angled Style with ports grouped in 6

<b>48-port, 2 RU:</b>	<a href="#">CPPA48FM6BL</a>
<b>48-port, 2 RU:</b>	<a href="#">CPPA48FM6VNSBL</a>

### Patch Panel Accessories

<b>Transitional cover:</b>	<a href="#">CPATC**</a>
<b>Angled filler panel 1 RU:</b>	<a href="#">CPAF1*</a>
<b>Angled filler panel 2 RU:</b>	<a href="#">CPAF2*</a>
<b>Flat filler panel 1 RU:</b>	<a href="#">DPFP1^</a>
<b>Flat filler panel 2 RU:</b>	<a href="#">DPFP2^</a>

### Extender Brackets

<b>1 RU:</b>	<a href="#">PEB1</a>
<b>2 RU:</b>	<a href="#">PEB2</a>

\*Colors: BLY (Black) or WH (White)

\*\*Colors: BL (Black) or WH (White)

^Colors other than Black: WH (White)

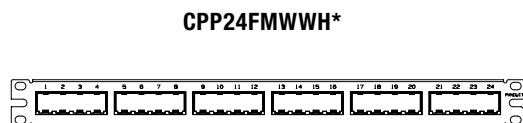
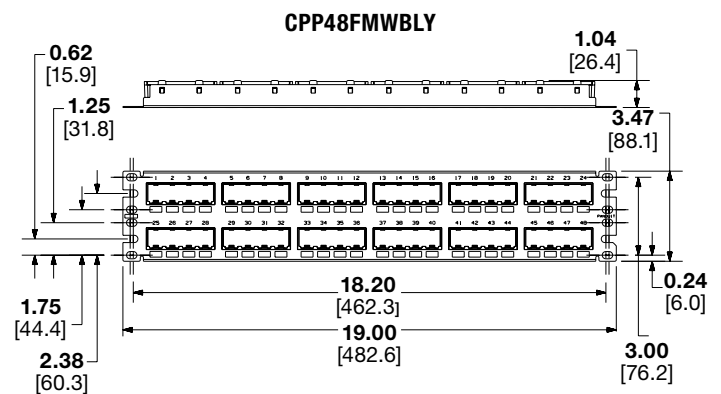
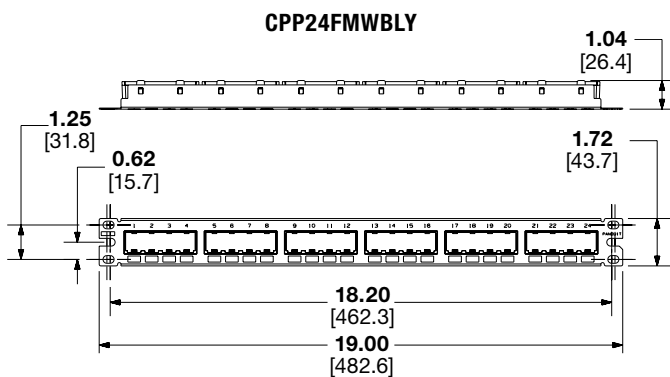
Note: White patch panels do not include the write-on detail box below the ports

# Mini-Com® Flush Mount Modular Patch Panels

## MINI-COM® FLUSH MOUNT MODULAR PATCH PANELS LABEL CHART

Part Number	Label Type	Laser/Ink	Laser/InkJet
CPP24FMWBLY	Adhesive	C252X030YPT	C252X030FJJ
CPP24FMWWH			
CPPA24FMWBLY			
CPPA24FMWWH			
CPP48FMWBLY			
CPP48FMVNSWBLY			
CPP48FMWWH			
CPPA48FMWBLY			
CPPA48FMWWH			
CPP48FM6BL		T031X000FJT C379X030YPT	C379X030FJJ
CPPA48FM6BL			
CPPA48FM6VNSBL			

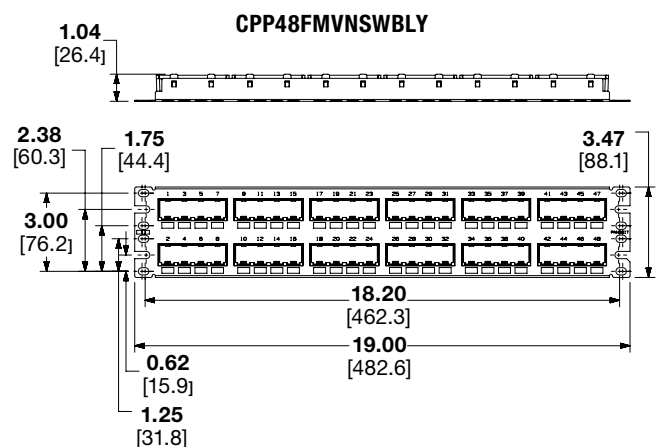
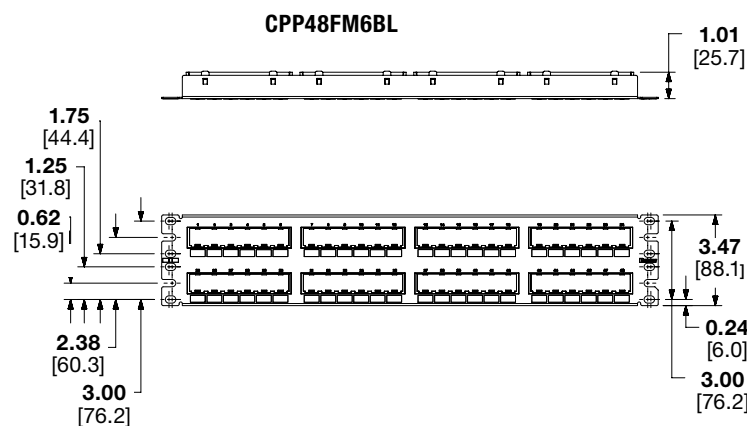
## ENGINEERING DRAWINGS



Dimensions are the same as CPP24FMWBLY



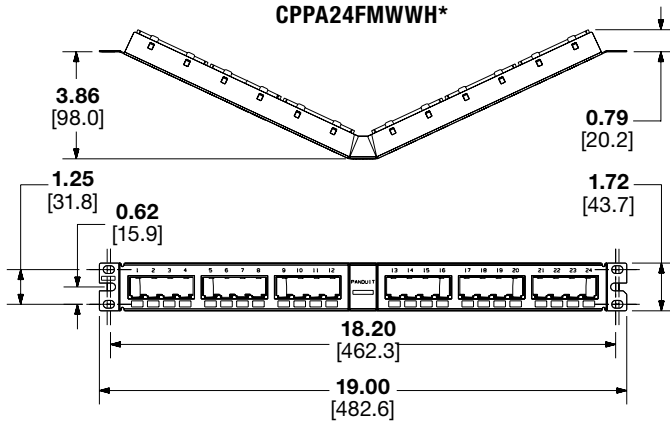
Dimensions are the same as CPP48FMWBLY



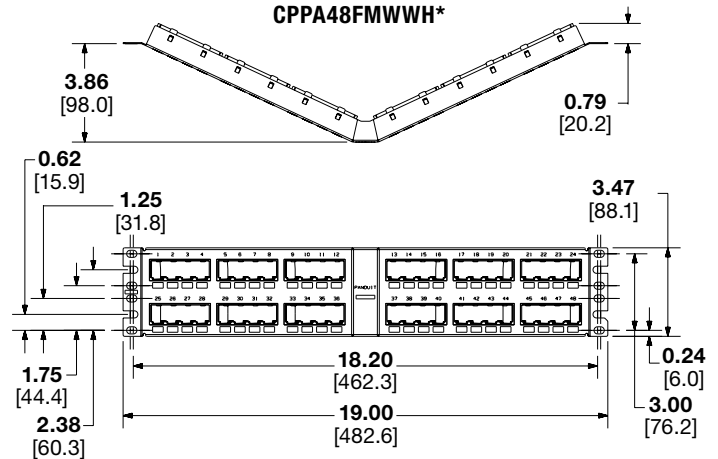
# Mini-Com® Flush Mount Modular Patch Panels

## ENGINEERING DRAWINGS

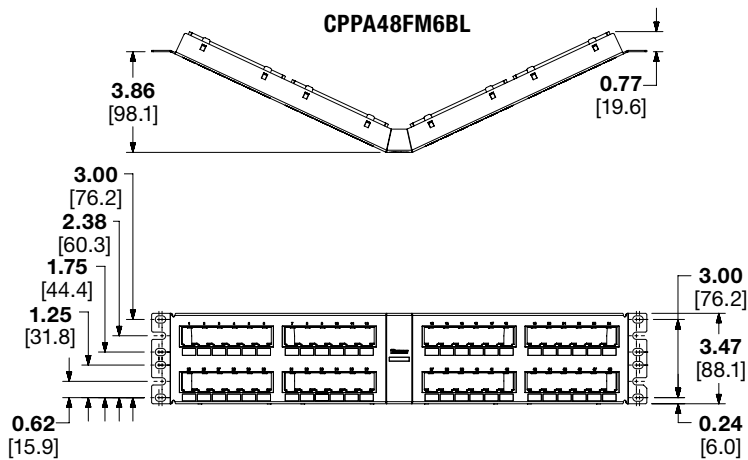
CPPA24FMWBLY  
CPPA24FMWWH\*



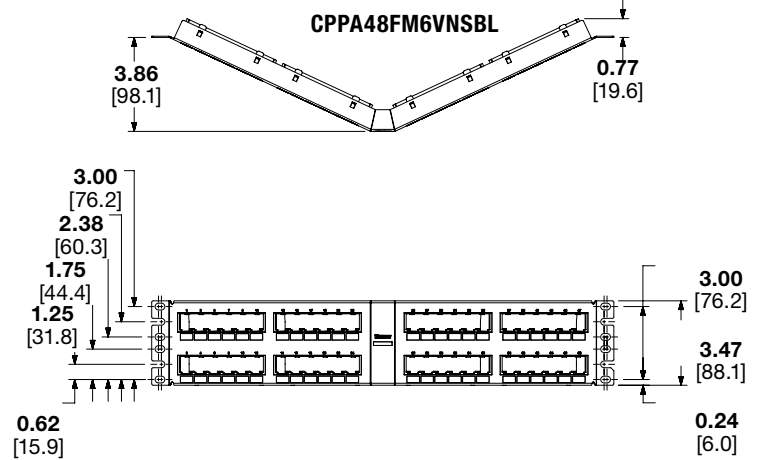
CPPA48FMWBLY  
CPPA48FMWWH\*



CPPA48FM6BL



CPPA48FM6VNSBL



Dimensions are in inches. [Dimensions in brackets are metric].

### WORLDWIDE SUBSIDIARIES AND SALES OFFICES

PANDUIT US/CANADA  
Phone: 800.777.3300

PANDUIT EUROPE LTD.  
London, UK  
Phone: 44.20.8601.7200

PANDUIT SINGAPORE PTE. LTD.  
Republic of Singapore  
Phone: 65.6305.7575

PANDUIT JAPAN  
Tokyo, Japan  
Phone: 81.3.6863.6000

PANDUIT LATIN AMERICA  
Guadalajara, Mexico  
Phone: 52.33.3777.6000

PANDUIT AUSTRALIA PTY. LTD.  
Victoria, Australia  
Phone: 61.3.9794.9020

For a copy of Panduit product warranties, log on to [www.panduit.com/warranty](http://www.panduit.com/warranty)

For more information

Visit us at [www.panduit.com](http://www.panduit.com)  
Contact Customer Service by email: [cs@panduit.com](mailto:cs@panduit.com)  
or by phone: 800.777.3300

**PANDUIT®**

© 2024 Panduit Corp.  
ALL RIGHTS RESERVED.  
COSP595-WW-ENG  
5/2024