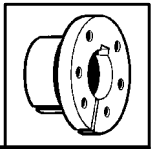
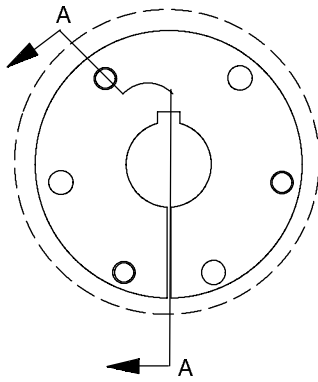


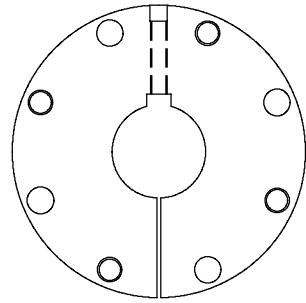
# SPECIFICATION



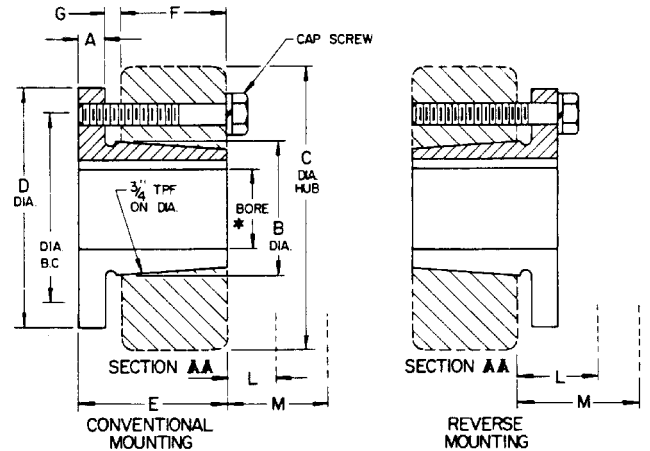
## QD Bushing Dimensions



Sizes JA - J



Sizes M - W



### QD BUSHING RATINGS AND DIMENSIONS

Bush. Symb.	Ratings (Lb-in) Bush. Torque Cap.*	Bore Range				Dimensions							
		Min.	Max. Bore for:			A	B Dia.	C Hub Dia.		D Dia.	E	F	G
			Full KW	Shallow KW	No KW			CI 30 Iron	Steel				
H	1,000	3/8	1-1/4	1-1/2	1-9/16	0.25	1.625	3.00	2.375	2.50	1.25	0.87	0.12
JA	1,000	1/2	1	1-3/16	1-1/4	0.31	1.38	3.93	2.25	2.00	1.00	0.56	0.12
SH	3,500	1/2	1-3/8	1-5/8	1-11/16	0.43	1.88	4.75	3.00	2.63	1.31	0.81	0.12
SDS	5,000	1/2	1-5/8	1-15/16	2	0.43	2.18	4.75	3.50	3.18	1.31	0.75	0.12
SD	5,000	1/2	1-5/8	1-15/16	2	0.43	2.18	3.81	3.50	3.18	1.81	1.25	0.12
SK	7,000	1/2	2-1/8	2-1/2	2-5/8	0.56	2.81	4.75	4.50	3.88	1.93	1.25	0.22
SF	11,000	1/2	2-5/16	2-15/16	...	0.63	3.13	6.38	5.50	4.63	2.06	1.25	0.22
E	20,000	7/8	2-7/8	3-1/2	...	0.88	3.83	7.50	6.50	6.00	2.75	1.63	0.25
F	30,000	1	3-1/4	3-15/16	4	1.00	4.43	7.75	7.25	6.63	3.75	2.50	0.34
J	45,000	1-1/2	3-3/4	4-1/2	...	1.13	5.14	9.00	8.00	7.25	4.63	3.18	0.38
M	85,000	2	4-3/4	5-1/2	...	1.25	6.50	11.38	10.00	9.00	6.75	5.18	0.41
N	150,000	2-7/16	5	6	...	1.50	7.00	12.00	...	10.00	8.12	6.25	0.56
P	250,000	2-15/16	5-15/16	7	...	1.75	8.25	14.00	...	11.75	9.38	7.25	0.63
W	375,000	4	7-1/2	8-1/2	...	2.00	10.42	17.00	...	15.00	11.38	9.00	0.50
S	625,000	5-1/2	9	10	...	2.75	12.13	19.00	...	17.75	15.25	12.00	0.75

\* Torque ratings apply when bushing installation screws are tightened to listed torque. Important: Do not over-torque screws. This can lead to hub damage.

### INSTALLATION INFORMATION

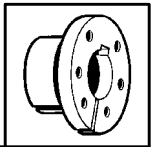
Bush. Sym.	Installation Screws				Required Wrench Clearance							
	B. C. Dia.	Qty.	Size	Screw Torque*	Conventional Mounting				Reverse Mounting			
					L-Install		M-Remove		L-Install		M-Remove	
#	@	#	@	#	@	#	@	#	@	#	@	
H	2.00	2	1/4-20 x 7/8	90	0.31	2.43	1.03	3.15	1.03	3.15	1.46	3.58
JA	1.65	3	10-24 x 1	54	0.41	2.53	1.13	3.25	1.13	3.25	1.56	3.68
SH	2.25	3	1/4 x 1-3/8	108	0.59	2.66	1.56	3.63	1.56	3.63	2.13	4.18
SDS	2.69	3	1/4 x 1-3/8	108	0.59	2.66	1.56	3.63	1.56	3.63	2.13	4.18
SD	2.69	3	1/4 x 1-7/8	108	0.66	2.72	2.06	4.13	2.06	4.13	2.63	4.68
SK	3.31	3	5/16 x 2	180	0.78	2.72	2.25	4.25	2.31	4.31	2.38	5.00
SF	3.88	3	3/8 x 2	360	0.91	2.91	2.38	4.36	2.43	4.43	3.32	5.31
E	5.00	3	1/2 x 2-3/4	720	1.25	3.19	3.13	5.06	3.18	5.13	4.43	6.38
F	5.63	3	9/16 x 3-5/8	900	1.28	3.10	4.13	5.94	4.18	6.00	5.50	7.31
J	6.25	3	5/8 x 4-1/2	1,620	1.41	3.22	4.94	6.75	3.93	5.75	5.50	7.31
M	7.88	4	3/4 x 6-3/4	2,700	2.16	4.03	7.69	9.56	...	...	...	...
N	8.50	4	7/8 x 8	3,600	2.28	...	9.25	...	...	...	...	...
P	10.00	4	1 x 9-1/2	5,400	3.13	...	10.88	...	...	...	...	...
W	12.75	4	1-1/8 x 11-1/2	7,200	3.88	...	13.38	...	...	...	...	...
S	15.00	5	1-1/4 x 15	9,000	3.75	...	16.50	...	...	...	...	...

# Using Open-End Wrench

\* Lb - in

QD STOCK SIZES PAGES PT6-15, NO TAG	QD METRIC BORES, REBORABLES PAGE PT6-18	QD HUBS PAGE PT6-22	T-L BUSHINGS, HUBS PAGES PT6-2-PT6-12
--	---	------------------------	--

# SPECIFICATION



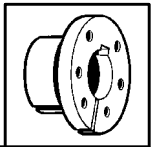
## QD Bushings - Stock Sizes

### STOCK QD BUSHINGS WITH FINISHED BORE AND STANDARD KEYWAY

Bush. Sym./ Avg. Wt..	Bore ★	Part No.	Bushing Keyway	Shaft Keyseat (Ref.)	Bush. Sym./ Avg. Wt..	Bore ★	Part No.	Bushing Keyway	Shaft Keyseat (Ref.)	Bush. Sym./ Avg. Wt..	Bore ★	Part No.	Bushing Keyway	Shaft Keyseat (Ref.)			
H .9 Lbs.	3/8	121129	None	None	SH 9 Lbs. (Con't)	1-5/16	120358	5/16 X 5/32	5/16 X 5/32	SD 1.6 Lbs (con't)	1-11/16	120383	3/8 x 3/16	3/8 x 3/16			
	7/16	121130				1-3/8	120359				1-3/4	120384	3/8 x 1/8▲	3/8 x 3/16			
	1/2	121131	1/8 x 1/16	1/18 x 1/16		1-7/16	120360	3/8 X 1/16 ▲	3/8 X 3/16		1-13/16	120385	1/2 x 1/16▲	1/2 x 1/4			
	9/16	121133				1-1/2	120361				1-7/8	120386					
	5/8	122050				1-9/16	120362				1-15/16	120387					
	11/16	121134				1-5/8	120363				2	120581			None	None	
	3/4	122051	3/16 x 3/32	3/16 x 3/32		1-11/16	120580	None	None		1/2	120413	1/8 x 1/16	1/8 x 1/16			
	13/16	121136				1/2	120388	5/8	120415		3/16 x 3/32	11/16	120416				
	7/8	122052	9/16	120389		11/16	120391	120417	120418								
	15/16	121138	1/4 x 1/8	1/4 x 1/8		3/4	120392	3/16 x 3/32	3/16 x 3/32			7/8	120419				
1	122053	13/16			120393	15/16	120395	15/16	120420								
1-1/16	121140	7/8			120394	1	120396	1	120421								
1-1/8	122054	1-1/16			120397	1-1/8	120398	1-1/8	120422								
1-3/16	122055	5/16 x 1/16	5/16 x 7/32	1-1/8	120398	1/4 x 1/8	1/4 x 1/8	1-1/8	120423	1/4 x 1/8	1/4 x 1/8						
1-1/4	122056			1-3/16	120399	1-1/4	120400	1-3/16	120424								
1-5/16	121144	3/8 x 1/16#	3/8 x 1/4	1-1/4	120400	1-1/4	120400	1-1/4	120425								
1-7/16	121146			1-5/16	120401	1-15/16	120426	5/16 x 5/32	5/16 x 5/32								
1-1/2■	121147	JA .4 Lbs.	1/8 x 1/16	1/8 x 1/16	1-3/8	120402	5/16 x 5/32	5/16 x 5/32	1-3/8	120427	SK 2.7 Lbs.	1-7/16	120428	3/8 x 3/16	3/8 x 3/16		
5/8	120334				1-7/16	120403	1-9/16	120430	3/8 x 3/16	3/8 x 3/16		1-1/2	120429				
11/16	120335				1-1/2	120404	1-5/8	120431									
3/4	120336				1-9/16	120405	1-11/16	120432									
13/16	120337				1-5/8	120406	1-3/4	120433									
7/8	120338				1/4 x 1/8	1/4 x 1/8	1-11/16	120407	3/8 x 1/8▲	3/8 x 3/16		1-13/16	120434				
15/16	120339						1-3/4	120408	1-13/16	120409		1/2 x 1/16▲	1/2 x 1/4			1-7/8	120435
1	120340				1/4 x 1/16▲	1/4 x 1/8	1-13/16	120409	1/2 x 1/16▲	1/2 x 1/4		1-15/16	120436			1/2 x 1/4	1/2 x 1/4
1-1/16	120341						1-7/8	120410				2	120437				
1-1/8	120342						1-15/16	102411				2-1/16	120438				
1-3/16	120343	2	120412	2-1/8			120439										
1-1/4	120344	None	None	1/2	120364	1/8 x 1/16	1/8 x 1/16	2-3/16	120440	1/2 x 3/16▲	1/2 x 1/4						
SH .9 Lbs.	1/2	120345	1/8 x 1/16	1/8 x 1/16	9/16	120365	3/16 x 3/32	3/16 x 3/32	2-1/4	120441	5/8 x 1/16▲	5/8 x 5/16					
	9/16	120346			5/8	120366			2-5/16	120442							
	5/8	120347	3/16 x 3/32	3/16 x 3/32	11/16	120367	3/4	120368	2-3/8	120443							
	11/16	120348			13/16	120369	2-7/16	120444									
	3/4	120349			7/8	120370	2-1/2	120445									
	13/16	120350			15/16	120371	2-5/8	120447	None	None							
	7/8	120351	1/4 x 1/8	1/4 x 1/8	1	120372	1/4 x 1/8	1/4 x 1/8	1/2	120448	1/8 x 1/16	1/8 x 1/16					
	15/16	120352			1-1/16	120373			5/8	120450							
	1	120353			1-1/8	120374			11/16	120451	3/16 x 3/32	3/16 x 3/32					
	1-1/16	120354			1-3/16	120375			3/4	120452							
1-1/8	120355	1-1/4			120376	13/16			120453								
1-3/16	120356	1-5/16			120377	7/8			120454								
1-1/4	120357	1-3/8	120378	15/16	120455	1/4 x 1/8	1/4 x 1/8										
▲ Key furnished for these sizes only ★ Bores not listed will be priced on application ■ Ductile Iron	1-7/16	120379	3/8 x 3/16	3/8 x 3/16	1-1/8			120374	5/16 x 5/32	5/16 x 5/32	1	120456					
	1-1/2	120380			1-1/8			120458									
	1-9/16	120381	1-5/8	120382	1-3/16			120459	1-1/4	120460	1-1/8	120458					
	1-5/8	120382			1-1/4			120460	1-3/16	120459							
					1-5/16			120461	5/16 x 5/32	5/16 x 5/32							

QD DIMENSIONS PAGES PT6-14	QD METRIC BORES, REBORABLES PAGE PT6-18	QD HUBS PAGE PT6-22	T-L BUSHINGS, HUBS PAGES PT6-2-PT6-12
-------------------------------	---	------------------------	--

# SPECIFICATION

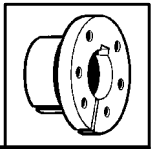


## QD Bushings - Stock Sizes

### STOCK QD BUSHINGS WITH FINISHED BORE AND STANDARD KEYWAY

Bush. Sym./ Avg. Wt..	Bore ★	Part No.	Bushing Keyway	Shaft Keyseat (Ref.)	Bush. Sym./ Avg. Wt..	Bore ★	Part No.	Bushing Keyway	Shaft Keyseat (Ref.)	Bush. Sym./ Avg. Wt..	Bore ★	Part No.	Bushing Keyway	Shaft Keyseat (Ref.)
SF 3.8 Lbs. (Con't)	1-3/8	120462	5/16 x 5/32	5/16 x 5/32	E 9 Lbs. (con't)	2-15/16	120521			J 21 Lbs. (Con't)	2-1/8	120607		
	1-7/16	120463				3	120522	3/4 x 1/8▲	3/4 x 3/8		2-3/16	120608	1/2 x 1/4	1/2 x 1/4
	1-1/2	120464	3/8 x 3/16	3/8 x 3/16		3-1/8	120524				2-1/4	120609		
	1-9/16	120465				3-3/16	120525	3/4 x 1/8▲	3/4 x 1/8		2-3/8	120610		
	1-5/8	120466				3-1/4	120526				2-7/16	120611		
	1-11/16	120467				3-5/16	120527	7/8 x 1/8▲	7/8 x 7/16		2-1/2	120612		
	1-3/4	120468				3-3/8	120528				2-5/8	120613	5/8 x 5/16	5/8 x 5/16
	1-13/16	120469	1/2 x 1/4	1/2 x 1/4		3-7/16	120529	7/8 x 1/16▲	7/8 x 7/16		2-11/16	120614		
	1-7/8	120470				3-1/2	120530				2-3/4	120615		
	1-15/16	120471				1	120531				2-7/8	120617		
	2	120472			1-1/8	120533			2-15/16		120618			
	2-1/16	120473			1-3/16	120534	1/4 x 1/8	1/4 x 1/8	3		120619	3/4 x 3/8	3/4 x 3/8	
	2-1/8	120474	1-1/4	120535			3-1/8	120620						
	2-3/16	120475	1-3/8	120537	5/16 x 5/32	5/16 x 5/32	3-3/16	120621						
	2-1/4	120476	1-7/16	120538			3-1/4	120622						
	2-5/16	120477	1-1/2	120539			3-3/8	120623						
	2-3/8	120478	1-5/8	120541	3/8 x 1/16	3/8 x 3/16	3-7/16	120624						
	2-7/16	120479	1-11/16	120542			3-1/2	120625	7/8 x 7/16	7/8 x 7/16				
	2-1/2	120592	1-3/4	120543			3-5/8	120626						
	2-5/8	120482	1-13/16	120544			3-11/16	120627						
2-11/16	120483	1-7/8	120545			3-3/4	120628							
2-3/4	120484	1-15/16	120546			3-7/8	120629							
2-13/16	120485	2	120547	1/2 x 1/4	1/2 x 1/4	3-15/16	120630							
2-7/8	120486	2-1/8	120549			4	120631							
2-15/16	120487	2-3/16	120550			4-1/8	120632							
E 9 Lbs.	7/8	120488	3/16 x 3/32	3/16 x 3/32	F 14 Lbs.	2-1/4	120551			M 46 Lbs.	4-3/16	120633	1 x 1/8▲	1 x 1/2
	1	120490	1/4 x 1/8	1/4 x 1/8		2-5/16	120552				4-1/4	120634		
	1-1/8	120492				2-3/8	120553				4-3/8	120635		
	1-3/16	120493				2-7/16	120554				4-7/16	120636		
	1-1/4	120494				2-1/2	120555	5/8 x 5/16	5/8 x 5/16		4-1/2	120637		
	1-5/16	120495				2-5/8	120557				2	119900		
	1-3/8	120496	2-11/16	120558				2-1/8	119901		1/2 x 1/4	1/2 x 1/4		
	1-7/16	120497	2-3/4	120559				2-3/16	119902					
	1-1/2	120498	2-13/16	120560				2-1/4	119903					
	1-5/8	120500	2-7/8	120561				2-3/8	119904					
	1-11/16	120501	2-15/16	120562			2-7/16	119905						
	1-3/4	120502	3	120563	3/4 x 3/8	3/4 x 3/8	2-1/2	119906	5/8 x 5/16		5/8 x 5/16			
	1-7/8	120504	3-1/8	120565			2-5/8	119907						
	1-15/16	120505	3-3/16	120566			2-3/4	119908						
	2	120506	3-1/4	120567			2-7/8	119909						
	2-1/16	120507	3-3/8	120569			2-15/16	119910						
	2-1/8	120508	3-7/16	120570			3	119911	3/4 x 3/8	3/4 x 3/8				
	2-3/16	120509	3-1/2	120571	7/8 x 3/16▲	7/8 x 7/16	3-1/8	119912						
	2-1/4	120510	3-5/8	120573			3-3/16	119913						
	2-5/16	120511	3-11/16	120574			3-1/4	119914						
2-3/8	120512	3-3/4	120575			3-3/8	119915							
2-7/16	120513	3-7/8	120577	1 x 1/8▲	1 x 1/2	3-7/16	119916							
2-1/2	120514	3-15/16	120578			3-1/2	119917	7/8 x 7/16	7/8 x 7/16					
2-5/8	120516	4	120579	None	None	3-5/8	119918							
2-11/16	120517	J 21 Lbs.	1-1/2	120600			3-11/16	119919						
2-3/4	120518		1-5/8	120601	3/8 x 3/16	3/8 x 3/16	3-3/4	119920						
2-7/8	120520	1-3/4	120603			3-7/8	119921							
▲ Key furnished for these sizes only ★ Bores not listed will be priced on application ■ Ductile Iron						1-7/8	120604			3-15/16	119922	1 x 1/2	1 x 1/2	
						1-15/16	120605	1/2 x 1/4	1/2 x 1/4	4	119923			
						2	120606			4-1/8	119924			

QD DIMENSIONS PAGES PT6-14	QD METRIC BORES, REBORABLES PAGE PT6-18	QD HUBS PAGE PT6-22	T-L BUSHINGS, HUBS PAGES PT6-2-PT6-12
-------------------------------	---	------------------------	--



# SPECIFICATION

## QD Bushings - Stock Sizes

### STOCK QD BUSHINGS WITH FINISHED BORE AND STANDARD KEYWAY

Bush. Sym./ Avg. Wt..	Bore ★	Part No.	Bushing Keyway	Shaft Keyseat (Ref.)	Bush. Sym./ Avg. Wt..	Bore ★	Part No.	Bushing Keyway	Shaft Keyseat (Ref.)	Bush. Sym./ Avg. Wt..	Bore ★	Part No.	Bushing Keyway	Shaft Keyseat (Ref.)			
<b>M</b> 46 Lbs. (Con't)	4-3/16	119925	1 x 1/2	1 x 1/2	<b>N</b> 70 Lbs. (con't)	4-7/16	119949	1 x 1/2	1 x 1/2	<b>P</b> 133 Lbs. (Con't)	5-15/16	119974	1-1/2 x 3/4	1-1/2 x 3/4			
	4-1/4	119926				4-1/2	119950				6	119975	1-1/2 x 1/4	1-1/2 x 1/4			
	4-3/8	119927				4-3/4	119951	6-7/16	119976		▲						
	4-7/16	119928				4-7/8	119952	6-1/2	119977								
	4-1/2	119929				4-15/16	119953	7	119978		1-3/4 x 1/8▲	1-3/4 x 3/4					
	4-11/16	119930	1-1/4 x 5/8	1-1/4 x 5/8		5	119954	<b>W</b> 210 Lbs.	4		120276	1 x 1/2	1 x 1/2	4-1/4	120180		
	4-3/4	119931				5-1/8	119955		4-7/16		120181						
	4-7/8	119932				5-1/4	119956		4-1/2		120182						
	4-15/16	119933				5-7/16	119957		4-3/4		120183						
	5	119934				5-1/2	119958		5		120186			1-1/4 x 5/8	1-1/4 x 5/8		
	5-1/4	119935	1-1/4 x 1/4 ▲	1-1/4 x 5/8		5-3/4	119959		5-3/8		120188						
	5-7/16	119936				5-7/8	119960		5-1/2		120189						
	5-1/2	119937				5-15/16	119961		5-3/4		120190						
						6	119962		5-7/8		120191	1-1/2 x 3/4	1-1/2 x 3/4				
									6-1/2		120194						
<b>N</b> 70 Lbs.	2-7/16	119940	5/8 x 5/16	5/8 x 5/16	(2-15/16" Bore is Recommended Minimum)				<b>S</b> 350 Lbs.	S-Bushings can be bored up to a 10" maximum. Please inquire. For rebore information, see page PT6-18.							
	2-15/16	119941	3/4 x 3/8	3/4 x 3/8	3-7/16	119965	7/8 x 7/16			7/8 x 7/16							
	3-7/16	119942	7/8 x 7/16	7/8 x 7/16	3-15/16	119966											
	3-3/4	119943			4-7/16	119967	1 x 1/2			1 x 1/2							
	3-7/8	119944	1 x 1/2	1 x 1/2	4-1/2	119968											
	3-15/16	119945			4-3/4	119969											
	4	119946			4-15/16	119970											
	4-3/16	119947			5	119971	1-1/4 x 5/8	1-1/4 x 5/8									
4-1/4	119948			5-3/16	119984												
				5-1/2	119973												

▲ Key furnished for these sizes only  
 ★ Bores not listed will be priced on application  
 ■ Ductile Iron

QD DIMENSIONS PAGES PT6-14	QD METRIC BORES, REBORABLES PAGE PT6-18	QD HUBS PAGE PT6-22	T-L BUSHINGS, HUBS PAGES PT6-2-PT6-12
-------------------------------	---	------------------------	--