

BALDOR® • RELIANCE

Product Information Packet

L3403M

.25HP, 1725RPM, 1PH, 60HZ, 48, 3411L, TEFC, F1

Part Detail							
Revision:	Y	Status:	PRD/A	Change #:		Proprietary:	No
Type:	AC	Prod. Type:	3411L	Elec. Spec:	34WG5602	CD Diagram:	CD0269
Enclosure:	TEFC	Mfg Plant:		Mech. Spec:	34C051	Layout:	34LYC051
Frame:	48	Mounting:	F1	Poles:	04	Created Date:	
Base:	RG	Rotation:	R	Insulation:	B	Eff. Date:	07-20-2015
Leads:	7#18					Replaced By:	
Literature:		Elec. Diagram:					

Nameplate NP1257L	
CAT.NO.	L3403M
SPEC.	34C51-5602
HP	.25
VOLTS	115/230
AMP	5/2.5
RPM	1725
FRAME	48
	HZ 60
	PH 1
SER.F.	1.35
	CODE L
	DES N
	CL B
NEMA-NOM-EFF	55
	PF 57
RATING	40C AMB-CONT
CC	USABLE AT 208V 3
DE	6203
	ODE 6203
ENCL	TEFC
	SN
	SFA 5.6/2.8

AC Induction Motor Performance Data
Record # 6790 - Typical performance - not guaranteed values

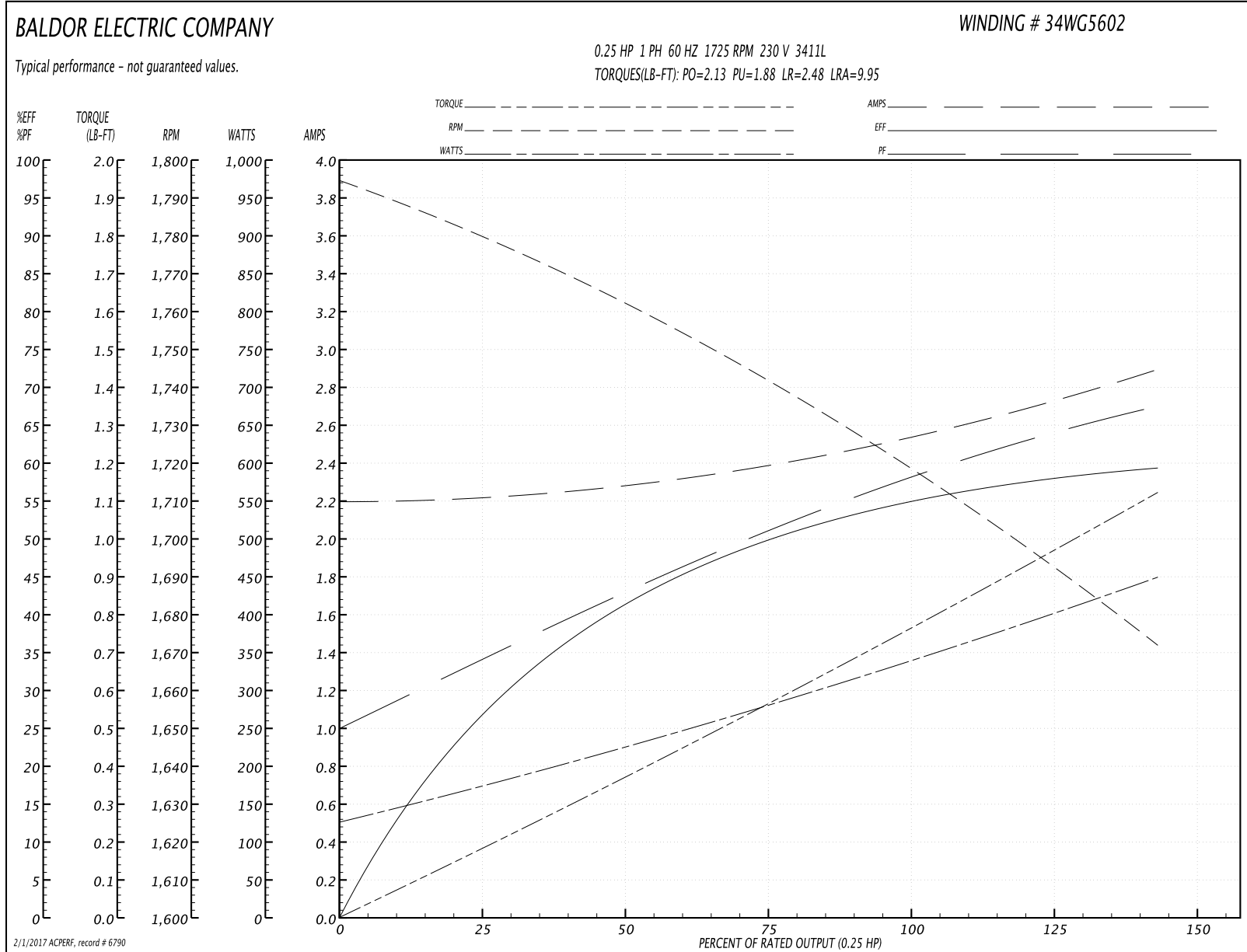
Winding: 34WG5602-R001	Type: 3411L	Enclosure: TEFC
-------------------------------	--------------------	------------------------

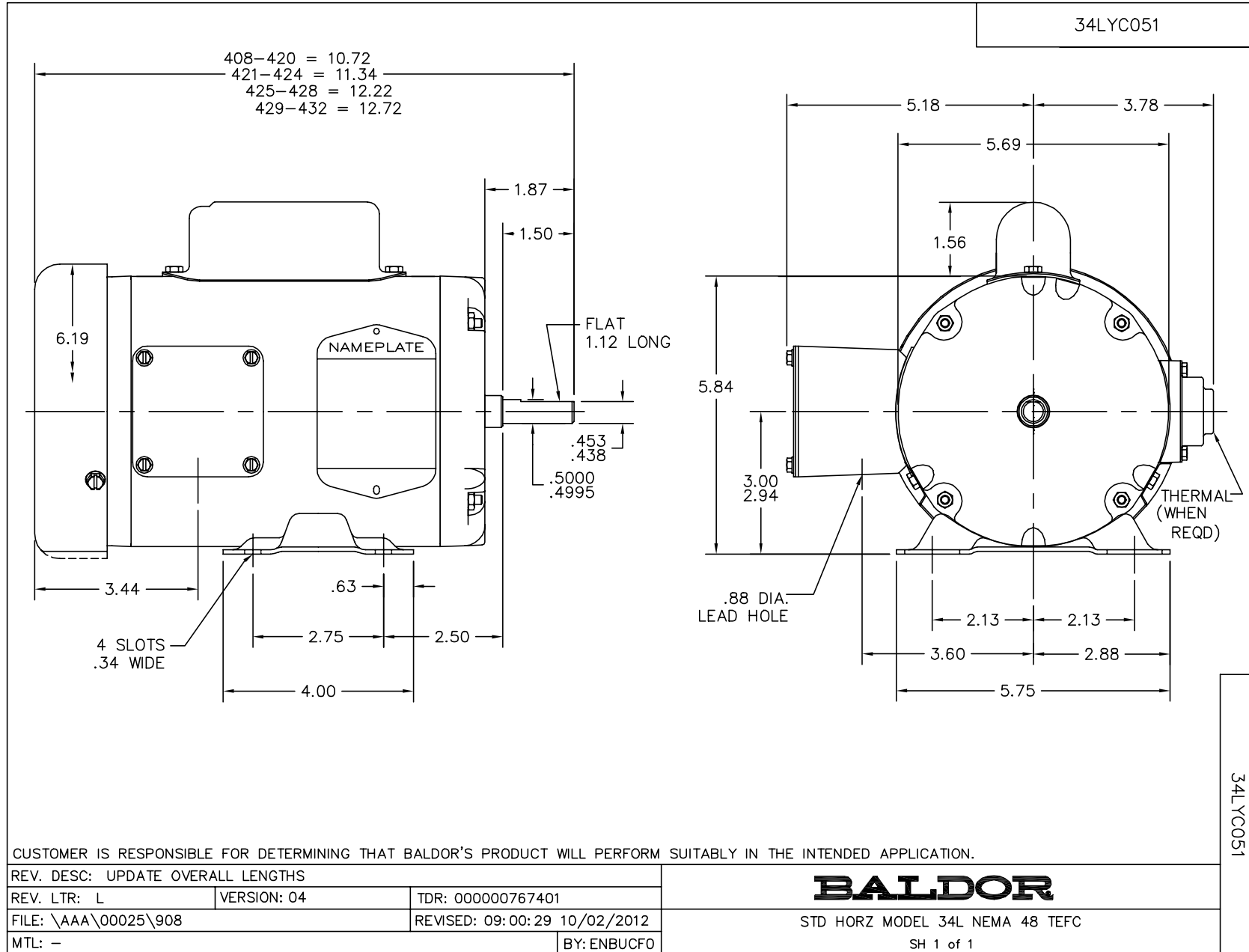
Nameplate Data				230 V, 60 Hz: High Voltage Connection	
Rated Output (HP)	.25			Full Load Torque	0.75 LB-FT
Volts	115/230			Start Configuration	direct on line
Full Load Amps	5/2.5			Breakdown Torque	2.13 LB-FT
R.P.M.	1725			Pull-up Torque	1.88 LB-FT
Hz	60	Phase	1	Locked-rotor Torque	2.48 LB-FT
NEMA Design Code	N	KVA Code	L	Starting Current	9.95 A
Service Factor (S.F.)	1.35			No-load Current	2.2 A
NEMA Nom. Eff.	55	Power Factor	57	Line-line Res. @ 25°C	8.88 Ω A Ph 7.06 Ω B Ph
Rating - Duty	40C AMB-CONT			Temp. Rise @ Rated Load	57°C
S.F. Amps	5.6/2.8			Temp. Rise @ S.F. Load	70°C

Load Characteristics 230 V, 60 Hz, 0.25 HP

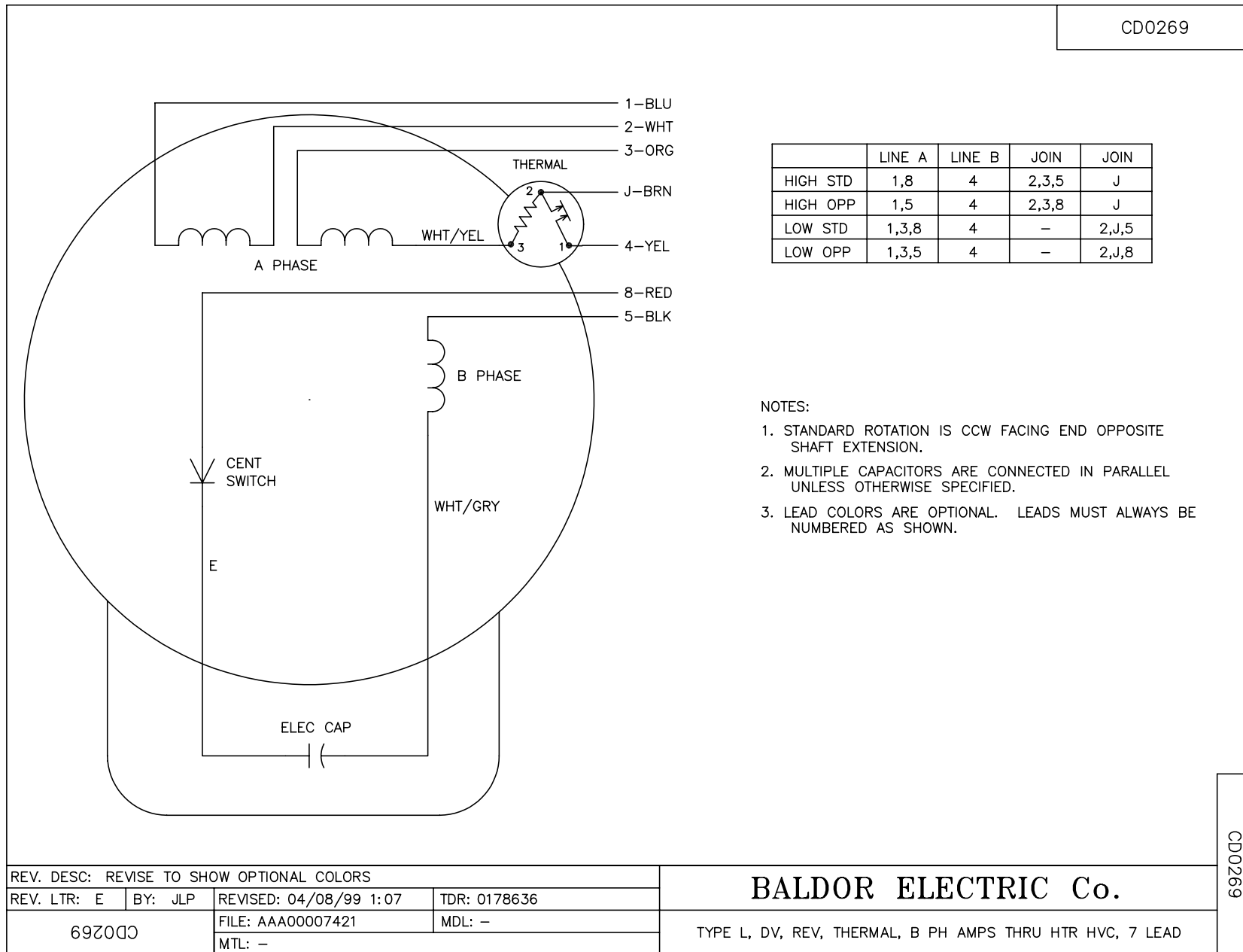
% of Rated Load	25	50	75	100	125	150	S.F.
Power Factor	32	40	49	57	63	69	67
Efficiency	28	40	50	55	58	59	59
Speed	1779	1763	1740	1720	1700	1670	1680
Line amperes	2.2	2.3	2.4	2.5	2.7	2.9	2.8

Performance Graph at 230V, 60Hz, 0.25HP Typical performance - Not guaranteed values





CD0269



NOTES:

1. STANDARD ROTATION IS CCW FACING END OPPOSITE SHAFT EXTENSION.
2. MULTIPLE CAPACITORS ARE CONNECTED IN PARALLEL UNLESS OTHERWISE SPECIFIED.
3. LEAD COLORS ARE OPTIONAL. LEADS MUST ALWAYS BE NUMBERED AS SHOWN.

REV. DESC: REVISE TO SHOW OPTIONAL COLORS			
REV. LTR: E	BY: JLP	REVISED: 04/08/99 1:07	TDR: 0178636
692000		FILE: AAA00007421	MDL: -
		MTL: -	

BALDOR ELECTRIC Co.

TYPE L, DV, REV, THERMAL, B PH AMPS THRU HTR HVC, 7 LEAD

CD0269