



OCR-03L Series

DECORATIVE OUTDOOR REMOTE LIGHTING HEADS

DATE:	LOCATION:
TYPE:	PROJECT:
CATALOG #:	

FEATURES

Outdoor UL Wet Location Listed die-cast aluminum lamp head and mounting plate assembly complete with LED MR16 lamp. Single or twin lamp fixtures available in dark bronze, black or white polyester powder coat finish. Mounts to 3½" octagonal or single gang boxes. Available with 3-watt LED lamps.

ORDERING GUIDE

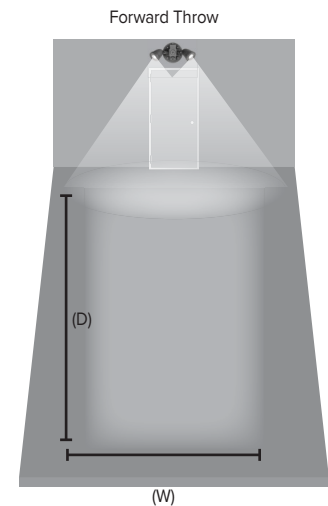
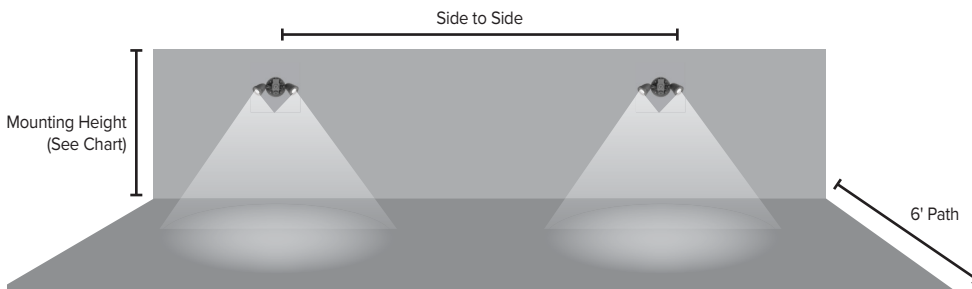
Example: OCRSB-03L

CATALOG #

OCR	Model	Heads	Finish	Lamp
OCR	S	Single	W White	03L 6/12V, 3W LED MR16
	D	Double	B Black	
			Z Dark Bronze	



APPLICATION INFORMATION



OCR-03L Multi double-head unit	Side to Side	
1fc avg.	Depth	Width
7.5' Mounting Height	48'	6'
9.0' Mounting Height	42'	6'
1fc min.	Depth	Width
7.5' Mounting Height	22'	6'
9.0' Mounting Height	25'	6'

OCR-03L One double-head unit	Forward Throw	
1fc avg.	Depth	Width
7.5' Mounting Height	27	10'
9.0' Mounting Height	23	10'
1fc min.	Depth	Width
7.5' Mounting Height	7	10'
9.0' Mounting Height	9	10'

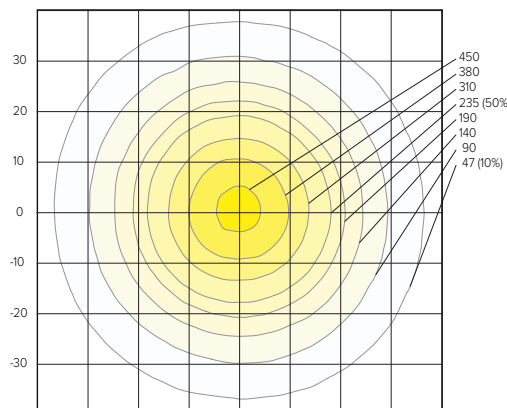
Meets Life Safety Code minimum illuminance of 0.1 fc and average illuminance of 1.0 fc. Assumes open space with no obstructions, mounting height of 7.5', ceiling height of 9' and reflectances of 80/50/20. Photometry files available on the Dual-Lite website.

PHOTOMETRY

LUMINAIRE DATA

Test No.	P22.00079
Description	Remote Emergency Head
Watts	2.6
Efficacy	96.9 lm/W
Mounting	Surface

POLAR GRAPH





CPR-03L

DECORATIVE INDOOR REMOTE LIGHTING HEADS

FEATURES

Injection molded thermoplastic decorative lamphead and mounting plate assembly. Mounts to 3½" octagonal or single gang boxes. Single and twin lamp fixtures with LED MR16 lamp included. Available in white finish.

DATE:	LOCATION:
TYPE:	PROJECT:
CATALOG #:	



ORDERING GUIDE

Example: CPRSW-03L

CATALOG #

CPR			
Model	Heads	Finish	Lamp
CPR	S Single D Double	W White	-03L 6V/12V, 3W LED MR16 Lamp

Other Remotes REFER TO PRODUCT SPECIFIC PAGES



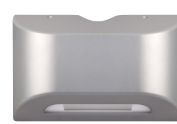
DYNR Series



DLR Series



LZR Series



PGR Series



EVHCR Series



EVO Series



CRH Series



AHD Series

ALL METAL REMOTE LIGHTING HEADS

FEATURES

Stamped aluminum housing with metal swivel. Standard finish available in white or black. Choice of incandescent or halogen PAR 36 lamps.

DATE:	LOCATION:
TYPE:	PROJECT:
CATALOG #:	



ORDERING GUIDE

Example: AHDSW0612

CATALOG #

AHD			
Model	Heads	Finish	Lamp
AHD	S Single	W White	0605 6 volt, 5.4 watts Incandescent ¹
	D Double	B Black	0607 6 volt, 7.2 watts Incandescent 0608 6 volt, 8 watts Halogen ¹
			0612 6 volt, 12 watts Halogen
			0618 6 volt, 18 watts Incandescent 0620 6 volt, 20 watts Halogen
			0625 6 volt, 25 watts Incandescent
			1207 12 volt, 7.2 watts Incandescent 1208 12 volt, 8 watts Halogen ¹
			1212 12 volt, 12 watts Halogen
			1218 12 volt, 18 watts Incandescent 1225 12 volt, 25 watts Incandescent
			1235 12 volt, 35 watts Incandescent
			1250 12 volt, 50 watts Halogen

Notes:

- 1 Sealed Beam Type Lamp

SRH Series

STANDARD REMOTE LIGHTING HEADS

FEATURES

Injection molded thermoplastic lamphead/round mounting plate assemblies. Mounts to 3½" octagonal or single gang boxes. For use with most commercial or industrial emergency fixtures. Standard finish is available in white or black. Single and twin lamp fixtures with a choice of incandescent or halogen PAR 36 lamps.



ORDERING GUIDE

Example: AHDSW0612

CATALOG #

SRH			
Model	Heads	Finish	Lamp
SRH	S Single	W White	0605 6 volt, 5.4 watts Incandescent ¹
	D Double	B Black	0607 6 volt, 7.2 watts Incandescent 0608 6 volt, 8 watts Halogen ¹
			0612 6 volt, 12 watts Halogen
			0618 6 volt, 18 watts Incandescent 0620 6 volt, 20 watts Halogen
			0625 6 volt, 25 watts Incandescent
			1207 12 volt, 7.2 watts Incandescent 1208 12 volt, 8 watts Halogen ¹
			1212 12 volt, 12 watts Halogen
			1218 12 volt, 18 watts Incandescent 1225 12 volt, 25 watts Incandescent
			1235 12 volt, 35 watts Incandescent
			1250 12 volt, 50 watts Halogen

Notes:

- 1 Sealed Beam Type Lamp



OMS Series

OUTDOOR REMOTE LIGHTING HEADS

DATE:LOCATION:

TYPE:PROJECT:

CATALOG #:

FEATURES

Outdoor aluminum spot with sealed lamp and swivel assembly.
Furnished with round gasketed aluminum mounting plate.
Mounts to 3/2" octagonal boxes.



ORDERING GUIDE

Example: OMSDB0605

CATALOG #

OMS			
Model	Heads	Finish	Lamp
OMS	S Single	W White	0605 6 volt, 5.4 watts Incandescent ¹
	D Double	B Black	0607 6 volt, 7.2 watts Incandescent1 0608 6 volt, 8 watts Halogen ¹
			0612 6 volt, 12 watts Halogen
			0618 6 volt, 18 watts Incandescent 0620 6 volt, 20 watts Halogen
			0625 6 volt, 25 watts Incandescent
			1207 12 volt, 7.2 watts Incandescent1 1208 12 volt, 8 watts Halogen ¹
			1212 12 volt, 12 watts Halogen
			1218 12 volt, 18 watts Incandescent 1225 12 volt, 25 watts Incandescent
			1235 12 volt, 35 watts Incandescent
			1250 12 volt, 50 watts Halogen

Notes:
1 Sealed Beam Type Lamp