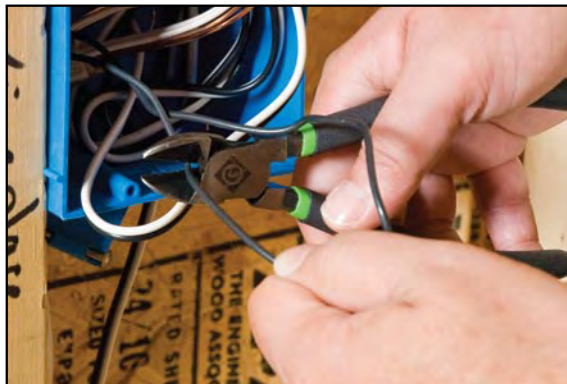


Diagonal Cutting Pliers



- Forged from chrome vanadium steel for greater durability and strength
- Precision-machined and induction-hardened blades strengthen cutters and provide consistent performance.
- Effectively cuts most hardened wire, ACSR, bolts, screws and nails.
- Through-hardened steel for longer life.
- Dual cutting edges for optimum cutting performance
- Exceeds ASME/ANSI specifications.
- Rugged riveted construction for smooth precise action.
- Lifetime limited warranty.
- Note: This is not an insulated tool.

Molded Grip Only

- Custom grip allows area for user identification.
- Flared handles for added comfort and leverage.
- Wider grip design provides larger load bearing area for user comfort.

Dipped Grip Only

- Double layered vinyl handles for comfort and slip resistance.
- Handles allow for easy storage of tools in pouches and tool bags.

0251-08M



0251-08D



0251-08AM



0251-08AD



MOLDED GRIP

CAT. NO.	UPC NO.	DESCRIPTION
0251-05M	54736	Diagonal Cutting Pliers 5" Mini molded grip
0251-06M	54737	Diagonal Cutting Pliers 6" molded grip
0251-07M	54738	High Leverage Diagonal Cutting Pliers 7" molded grip
0251-08M	54739	High Leverage Diagonal Cutting Pliers 8" molded grip
0251-08M-CP	95926	High Leverage Diagonal Cutting Pliers 8" molded grip Counter Pack (Qty 5)
0251-08AM	54740	High Leverage Diagonal Cutting Pliers 8" angled molded grip

SPECIFICATIONS	5"	6"	7"	8"
Overall Length	5-1/2" (14.0 cm)	6-1/8" (15.5 cm)	7" (17.8 cm)	8-3/4" (22.2 cm)
Weight	.28 lbs. (.13 kg)	.35 lbs. (.16 kg)	.57 lbs. (.26 kg)	.85 lbs. (.39 kg)

DIPPED GRIP

CAT. NO.	UPC NO.	DESCRIPTION
0251-05D	89257	Diagonal Cutting Pliers 5" Mini dipped grip
0251-06D	89256	Diagonal Cutting Pliers 6" dipped grip
0251-07D	89255	High Leverage Diagonal Cutting Pliers 7" dipped grip
0251-08D	89254	High Leverage Diagonal Cutting Pliers 8" dipped grip
0251-08AD	89258	High Leverage Diagonal Cutting Pliers 8" angled dipped grip

SPECIFICATIONS	5"	6"	7"	8"
Overall Length	5-1/2" (14.0 cm)	6-1/8" (15.5 cm)	7" (17.8 cm)	8-3/4" (22.2 cm)
Weight	.28 lbs. (.13 kg)	.35 lbs. (.16 kg)	.57 lbs. (.26 kg)	.85 lbs. (.39 kg)