

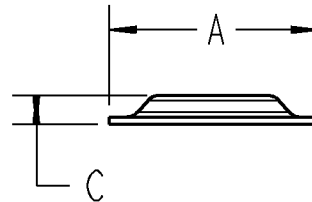
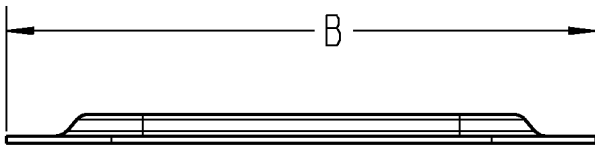
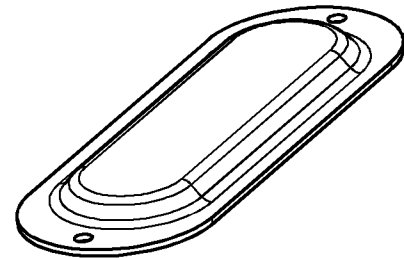
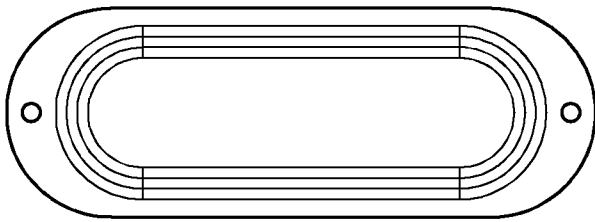


T&B Conduit Bodies



NOTES:

1. MATERIAL: CARBON STEEL
2. FINISH: ZINC PLATED
3. TWO SCREW STYLE COVER SHOWN



| CAT. No. | SIZE | DESCRIPTION | DIM "A" | DIM "B" | DIM "C" |
|----------|----------------|--|---------|---------|---------|
| K50S | 1/2" | RAISED DOME STAMPED STEEL CONDUIT BODY COVER | 1-5/16" | 3-7/8" | 1/4" |
| K75S | 3/4" | RAISED DOME STAMPED STEEL CONDUIT BODY COVER | 1-1/2" | 4-5/8" | 5/16" |
| K100S | 1" | RAISED DOME STAMPED STEEL CONDUIT BODY COVER | 1-3/4" | 5-5/16" | 5/16" |
| K125S | 1-1/4"- 1-1/2" | RAISED DOME STAMPED STEEL CONDUIT BODY COVER | 2-1/2" | 7-3/16" | 3/8" |
| K200S | 2" | RAISED DOME STAMPED STEEL CONDUIT BODY COVER | 3-3/16" | 9-1/2" | 1/2" |
| K250S | 2-1/2" -3" | RAISED DOME STAMPED STEEL CONDUIT BODY COVER | 4-5/16" | 12-1/4" | 3/4" |
| K350S | 3-1/2"-4" | RAISED DOME STAMPED STEEL CONDUIT BODY COVER | 5-5/8" | 14-7/8" | 3/4" |

GENERAL NOTES

1. ALL DIMENSIONS ARE FOR REFERENCE ONLY.
2. DIMENSIONS IN BRACKETS [] ARE IN METRIC UNITS.

REVISIONS

- | | |
|---|--|
| - | SEE ERN (****) FOR APPROVAL SIGNATURES & RELEASE DATE. PROJECT NO: **** |
|---|--|

Thomas & Betts
www.tnb.com

DESCRIPTION RAISED DOME STAMPED STEEL CONDUIT BODY COVERS

| | | | |
|--|----------------------------|----------------------|----------------------------------|
| ORIGINAL PROJECT NO / (ERN NO) RD55597 / (2006461) | SHEET NO: 1 OF 1 | REV. NO: - | DRAWING NO: WSD-000260 |
|--|----------------------------|----------------------|----------------------------------|