

Basic Network IDF Assessment

Mitigate Network Downtime Risk Tied to Sub-Par Cabling Infrastructure

FREE Basic Network IDF Assessment

An assessment service that can help you optimize your network performance for today and plan for scaled growth tomorrow.

ASK YOURSELF

- » Do you have an up-to-date report card of your plant network infrastructure that is positioned to support current and future data collection requirements?
- » Do you have the time to evaluate your current infrastructure and make necessary, standards-based remediation to allow it to perform at its highest levels?
- » Is your contractor or in house staff maintaining your infrastructure to TIA standards?
- » If you answered **NO** to any of the above questions, then the Kirby Risk Installed Base Network Infrastructure Assessment is for **YOU**.

BENEFITS

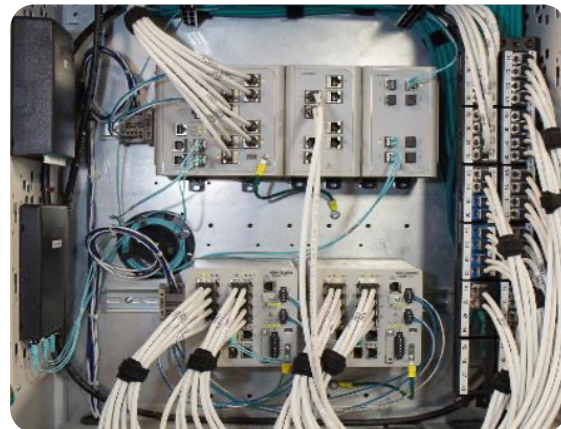
Kirby Risk Datacom Solutions' Infrastructure Assessment Service offers a high-level assessment that evaluates the health of your facility's physical infrastructure against applicable TIA industry standards and best practices.

THE KIRBY RISK DATACOM SOLUTIONS TEAM

Our team includes BICSI-trained and certified experts, featuring a BICSI Registered Communications Distribution Designer® (RCDD®) on staff.

Collectively, our team brings more than 200 years of combined experience in Datacom, specializing in assessing, designing and deploying enterprise, data center, and plant floor network physical infrastructures.

► **Ask your Kirby Risk Sales Team how to schedule an assessment of your facility's Network Infrastructure today!**



WHAT TO EXPECT

FIELD COLLECTION

This five-point, standards-based assessment evaluates the existing conditions of switch locations (IDFs & MDFs) and endpoints for standards compliance, suitability, accessibility, physical protection, and adequacy relative to the existing environment and intended or desired use.

WHAT IS ASSESSED

1. General Space and Environmental Conditions (MICE) and Arrangement
2. Racks and Network Cabinets, Power and Cooling
3. Cabling, Pathways and Patching
4. Supplementary Grounding and Bonding
5. Labeling and Identification

WHAT YOU GET BACK

You'll receive a findings report detailing identified issues by functional area. The report also includes actionable, TIA standard's-based remediation recommendations and a budgetary quote based upon the suggested/supplied remediation BOM.

