

BALDOR® • *RELIANCE*

Product Information Packet

UCME3145

3-4.5HP,3450RPM,3PH,60HZ,143TZ,3528M,TEA

Part Detail							
Revision:	C	Status:	PRD/A	Change #:		Proprietary:	No
Type:	AC	Prod. Type:	3528M	Elec. Spec:	35WGS055	CD Diagram:	CD0005
Enclosure:	TEAO	Mfg Plant:		Mech. Spec:	35E2501	Layout:	35LYE2501
Frame:	143TYZ	Mounting:	F1	Poles:	02	Created Date:	03-04-2014
Base:	RG	Rotation:	R	Insulation:	H	Eff. Date:	07-07-2016
Leads:	9#18					Replaced By:	
Literature:		Elec. Diagram:					

Nameplate NP1279L									
CAT.NO.	UCME3145								
SPEC.	35E2501S055G1								
HP	3-4.5								
VOLTS	208-230/460								
AMP	13-12/6								
RPM	3450								
FRAME	143TYZ								
SER.F.	1.00								
NEMA-NOM-EFF									
RATING	40C AMB-CONT								
CC							USABLE AT 208V	13	
DE	6206						ODE	6203	
ENCL	TEAO						SN		

Nameplate NP1263L											
CAT.NO.	UCME3145										
SPEC.	35E2501S055G1										
HP	3-4.5										
VOLTS	208-230/460										
AMP	13-12/6										
RPM	3450										
FRAME	143TYZ				HZ	60			PH	3	
SER.F.	1.00		CODE	K		DES	B		CL	H	
NEMA-NOM-EFF			PF								
RATING	40C AMB-CONT										
CC						USABLE AT 208V	13				
DE	6206			ODE	6203						
ENCL	TEAO		SN								

AC Induction Motor Performance Data
Record # 8898 - Typical performance - not guaranteed values

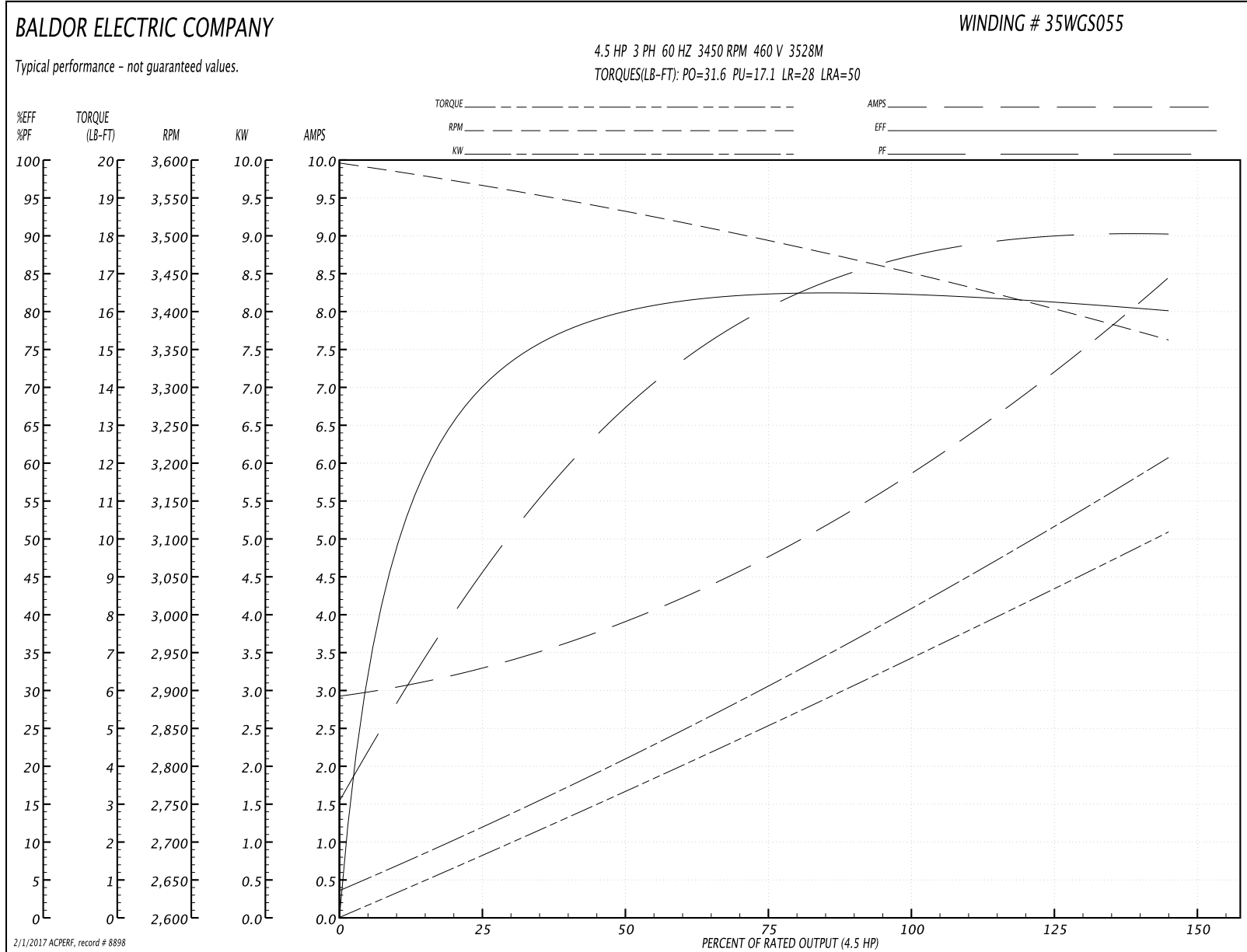
Winding: 35WGS055-R002	Type: 3528M	Enclosure: TEAO
-------------------------------	--------------------	------------------------

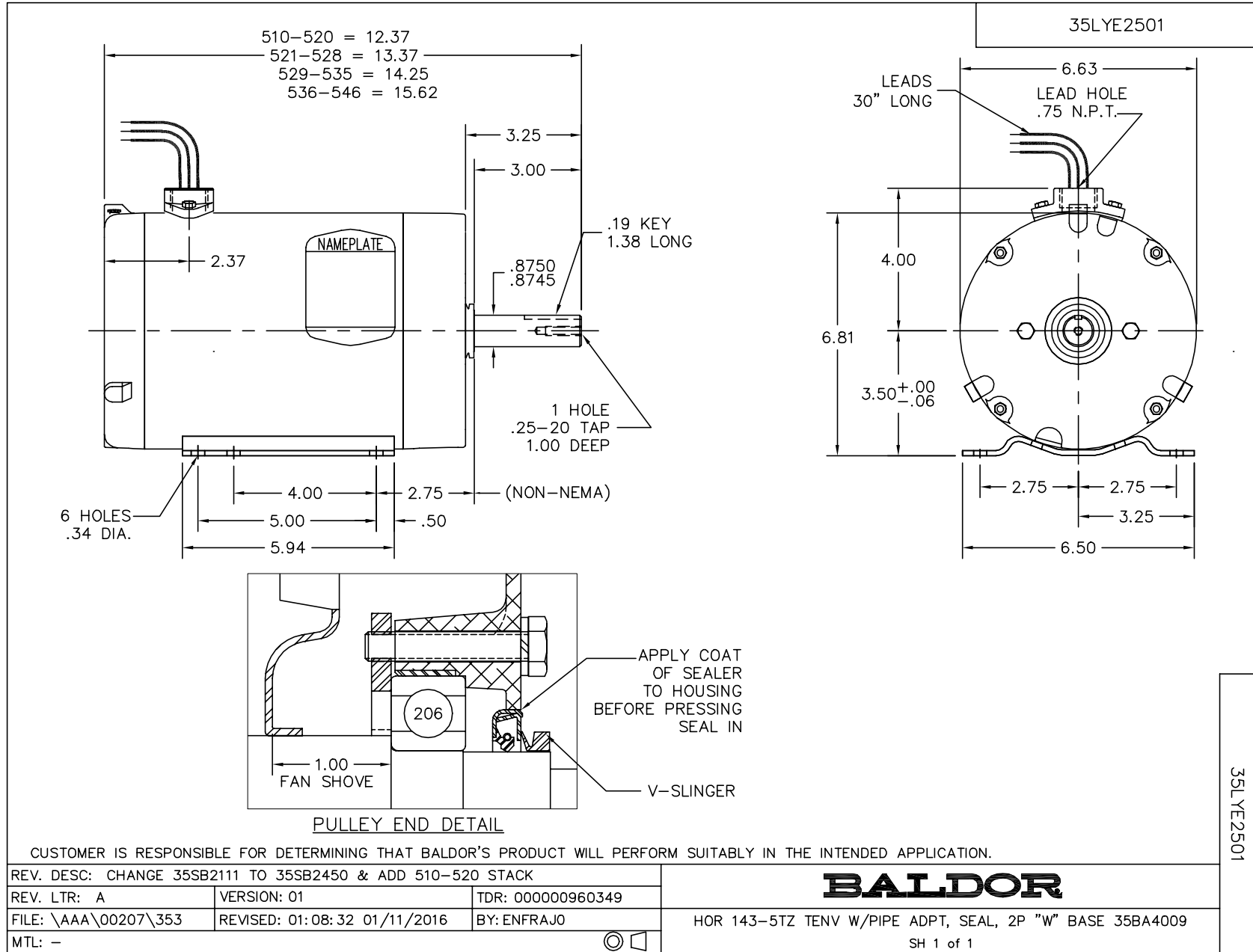
Nameplate Data				460 V, 60 Hz: High Voltage Connection	
Rated Output (HP)	3-4.5			Full Load Torque	6.8 LB-FT
Volts	208-230/460			Start Configuration	direct on line
Full Load Amps	13-12/6			Breakdown Torque	31.6 LB-FT
R.P.M.	3450			Pull-up Torque	17.1 LB-FT
Hz	60	Phase	3	Locked-rotor Torque	28 LB-FT
NEMA Design Code	B	KVA Code	K	Starting Current	50 A
Service Factor (S.F.)	1			No-load Current	3 A
NEMA Nom. Eff.	0	Power Factor	0	Line-line Res. @ 25°C	3.8 Ω
Rating - Duty	40C AMB-CONT			Temp. Rise @ Rated Load	

Load Characteristics 460 V, 60 Hz, 4.5 HP

% of Rated Load	25	50	75	100	125	150
Power Factor	48	69	81	86	89	92
Efficiency	68.9	79.4	82.5	82.7	81.7	79.8
Speed	3562	3530	3492	3455	3412	3359
Line amperes	3.2	3.9	4.8	5.9	7.1	8.4

Performance Graph at 460V, 60Hz, 4.5HP Typical performance - Not guaranteed values

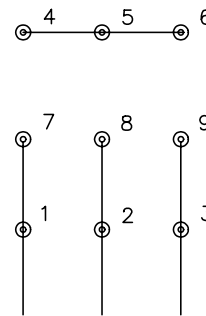




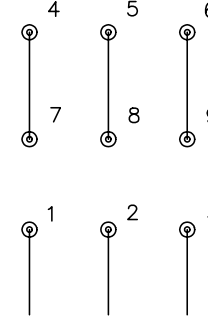
CD0005



LOW VOLTAGE
(2Y)



HIGH VOLTAGE
(1Y)



NOTES:

1. INTERCHANGE ANY TWO LINE LEADS TO REVERSE ROTATION.
2. OPTIONAL THERMOSTATS ARE PROVIDED WHEN SPECIFIED.
3. ACTUAL NUMBER OF INTERNAL PARALLEL CIRCUITS MAY BE A MULTIPLE OF THOSE SHOWN ABOVE.
4. LEAD COLORS ARE OPTIONAL. LEADS MUST ALWAYS BE NUMBERED AS SHOWN.

REV. DESC: REVISE TO SHOW OPTIONAL COLORS			
REV. LTR: E	BY: JLP	REVISED: 01/19/99 10:15	TDR: 0171435
900003		FILE: AAA00005140	MDL: -
		MTL: -	

BALDOR ELECTRIC Co.

3PH, DV, 9 LEADS

CD0005