

Switched Disconnects and Enclosures

Circuit-Lock® Fused Disconnect Switches

Circuit-Lock® 60 Ampere Fused Disconnect Switches

Features

- Non-metallic enclosure meets UL 50E Type 4X (watertight) 12 (dust-tight) and IP66 suitability requirements
- Fused disconnect switches accept Class “J” fuses
- Removable door for ease of wiring and installation
- Enclosure door can be locked to prevent unauthorized access. Additionally, if the switch is ON, the door cannot be opened
- Lockable highly visible red handle to meet OSHA lockout/tagout

Ordering Information

Description	UPC Number	Catalog Number
60A Circuit-Lock® Fused Disconnect Switches	783585519609	FDS60

Listings

UL 50E

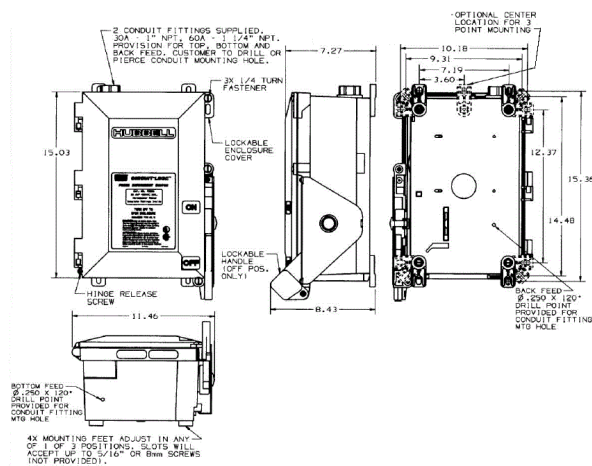
Specifications

Enclosure Material	PBT
Frame & Ground Plate	Galvanized Steel
Enclosure Gasket	Neoprene
Enclosure Screws	Stainless Steel 300 Series
Conduit Hub	Zinc, 1¼ in.

Performance

Electrical	
Dielectric Voltage	Withstands 3000V AC minimum
Max. Working Voltage	600V AC RMS
Mechanical	
Impact Resistance	In accordance with UL 746C
Mounting	External fully adjustable feet
Environmental	
Flammability	UL94-5VA and V0 Classification
Moisture Resistance	UL Type 4X, 12
Operating Temperature	Max. Continuous: 75°C; Min. Continuous: -40°C without impact

HUBBELL



Complementary Products

Replacement Switches	HBL60MIFRS
Watertight Closure Plug Kits	MICPK60
Replacement Mounting Feet	HBLRFT2

Online Resources

Customer Use Drawing
eCatalog
Installation Instructions

Dimensions in Inches (mm)

Hubbell Wiring Device-Kellems • Hubbell Incorporated (Delaware) • 40 Waterview Drive • Shelton, CT 06484

Phone (800) 288-6000 • Fax (800) 255-1031 • Specifications subject to change without notice.

