

BALDOR® • ***RELIANCE***

Product Information Packet

UCC7100

7.5HP,3450RPM,1PH,60HZ,184TZ,3640C,OPEN

Part Detail								
Revision:	AD	Status:	PRD/A	Change #:		Proprietary:	No	
Type:	AC	Prod. Type:	3640C	Elec. Spec:	36WGW881	CD Diagram:	CD0127	
Enclosure:	OPEN	Mfg Plant:		Mech. Spec:	36F548	Layout:	36LYF548	
Frame:	184TZ	Mounting:	F1	Poles:	02	Created Date:		
Base:	RG	Rotation:	R	Insulation:	F	Eff. Date:	04-02-2015	
Leads:	2#10 A PH,2#16 B PH 30" LG			Y			Replaced By:	
Literature:		Elec. Diagram:						

Nameplate NP1279L										
CAT.NO.	UCC7100									
SPEC.	36F548W881									
HP	7.5-10 AIR OVER									
VOLTS	230									
AMP	28-39									
RPM	3450									
FRAME	184TZ									
				HZ	60			PH	1	
SER.F.	1.00			CODE	D		DES	-	CL	F
NEMA-NOM-EFF	85.5			PF	95					
RATING	40C AMB-CONT									
CC							USABLE AT 208V			
DE	6206			ODE	6205					
ENCL	OPEN			SN						

Nameplate NP1263L	
CAT.NO.	UCC7100
SPEC.	36F548W881
HP	7.5-10 AIR OVER
VOLTS	230
AMP	28-39
RPM	3450
FRAME	184TZ
HZ	60
PH	1
SER.F.	1.00
CODE	D
DES	-
CL	F
NEMA-NOM-EFF	85.5
PF	95
RATING	40C AMB-CONT
CC	USABLE AT 208V
DE	6206
ODE	6205
ENCL	OPEN
SN	

AC Induction Motor Performance Data

Record # 10869 - Typical performance - not guaranteed values

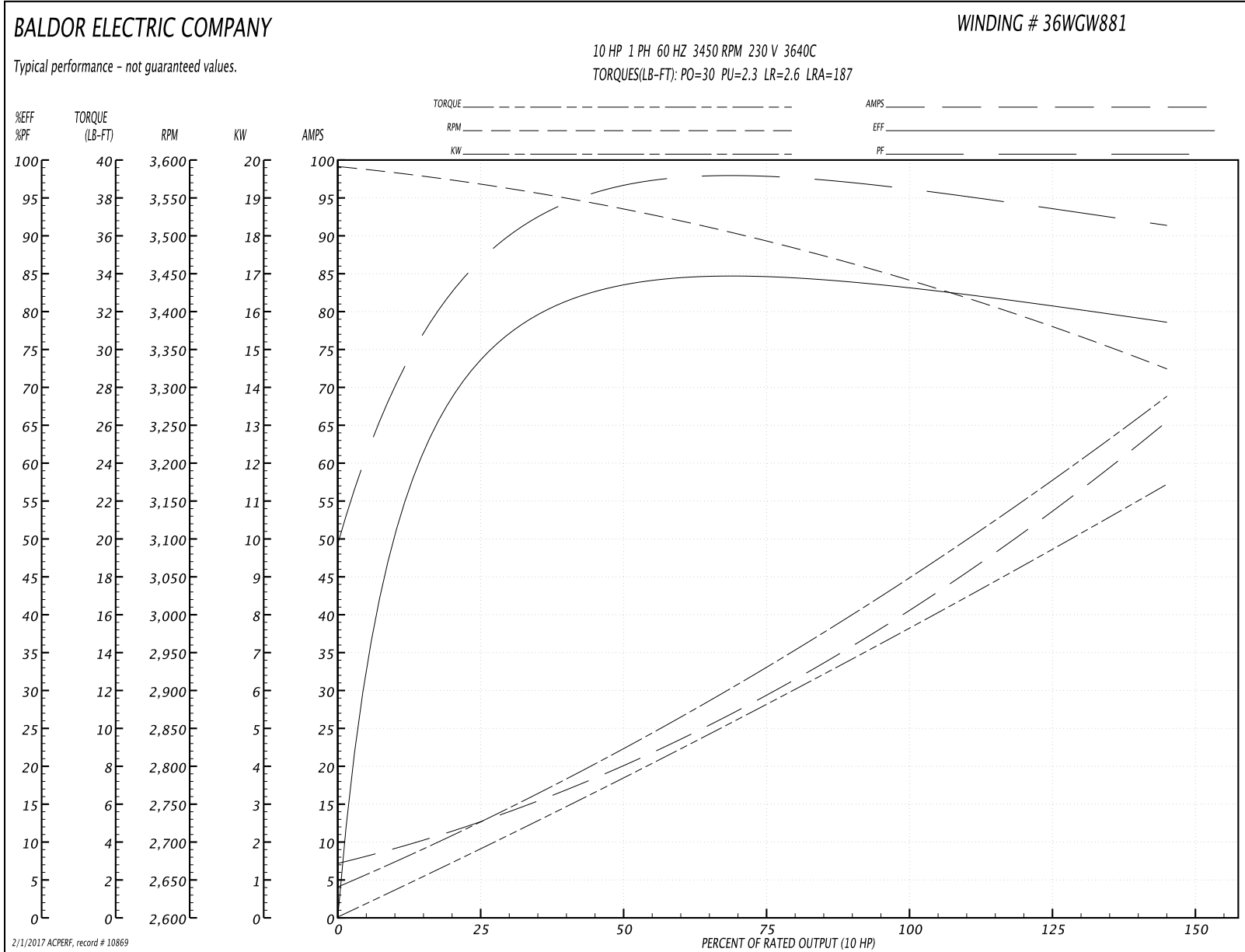
Winding: 36WGW881-R001	Type: 3640C	Enclosure: OPAO
-------------------------------	--------------------	------------------------

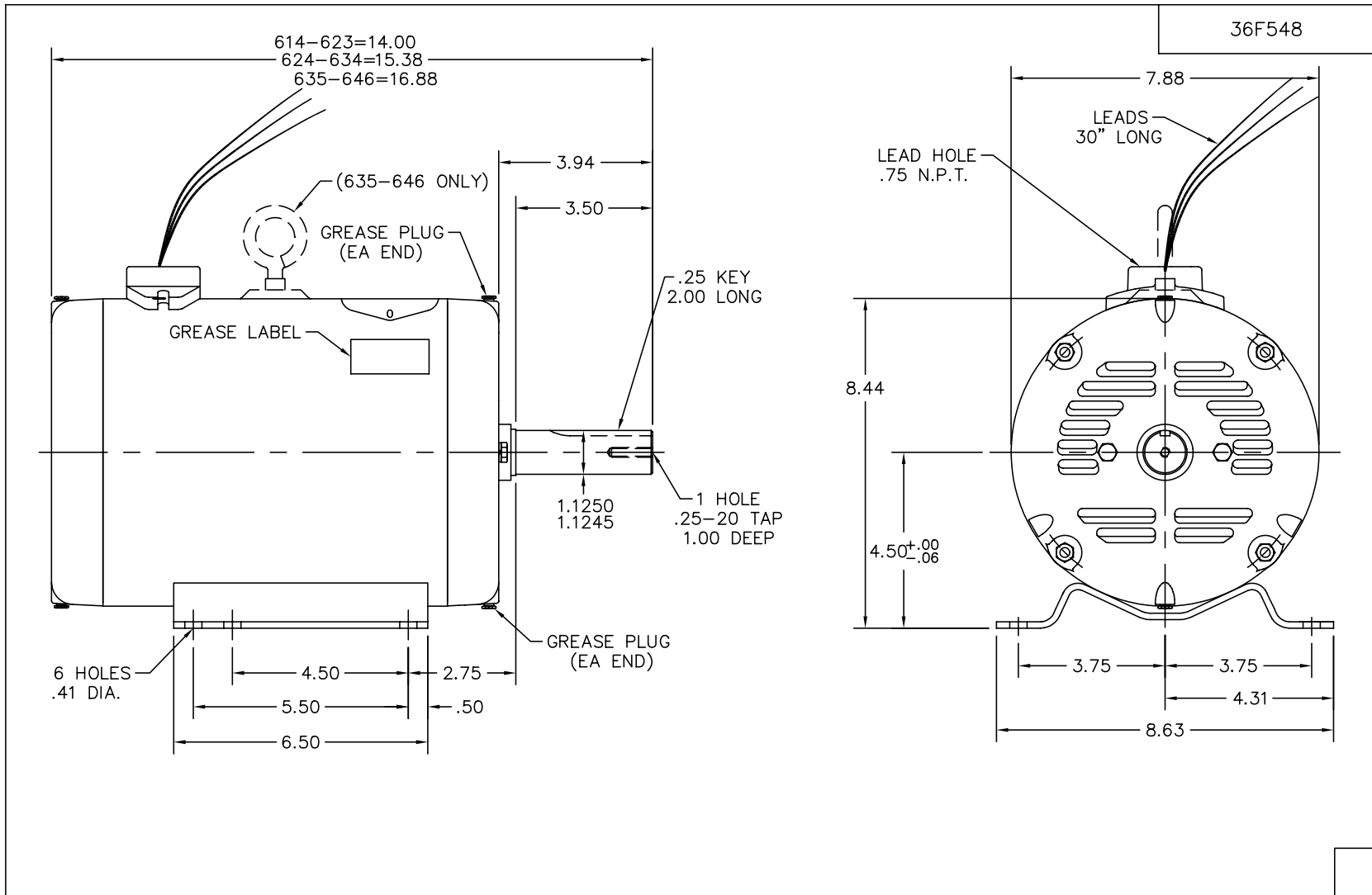
Nameplate Data				230 V, 60 Hz: Single Voltage Motor	
Rated Output (HP)	7.5-10 AIR OVER			Full Load Torque	15.3 LB-FT
Volts	230			Start Configuration	direct on line
Full Load Amps	28-39			Breakdown Torque	30 LB-FT
R.P.M.	3450			Pull-up Torque	2.3 LB-FT
Hz	60	Phase	1	Locked-rotor Torque	2.6 LB-FT
NEMA Design Code	-	KVA Code	D	Starting Current	187 A
Service Factor (S.F.)	1			No-load Current	7 A
NEMA Nom. Eff.	85.5	Power Factor	95	Line-line Res. @ 25°C	0.229 Ω A Ph 0.877 Ω B Ph
Rating - Duty	40C AMB-CONT			Temp. Rise @ Rated Load	

Load Characteristics 230 V, 60 Hz, 10 HP

% of Rated Load	25	50	75	100	125	150
Power Factor	87	94	96	96	95	94
Efficiency	72.4	82.3	84.4	83.9	81.7	78
Speed	3564	3529	3490	3445	3390	3319
Line amperes	12.9	21	30.2	40.4	52	66.1

Performance Graph at 230V, 60Hz, 10.0HP Typical performance - Not guaranteed values

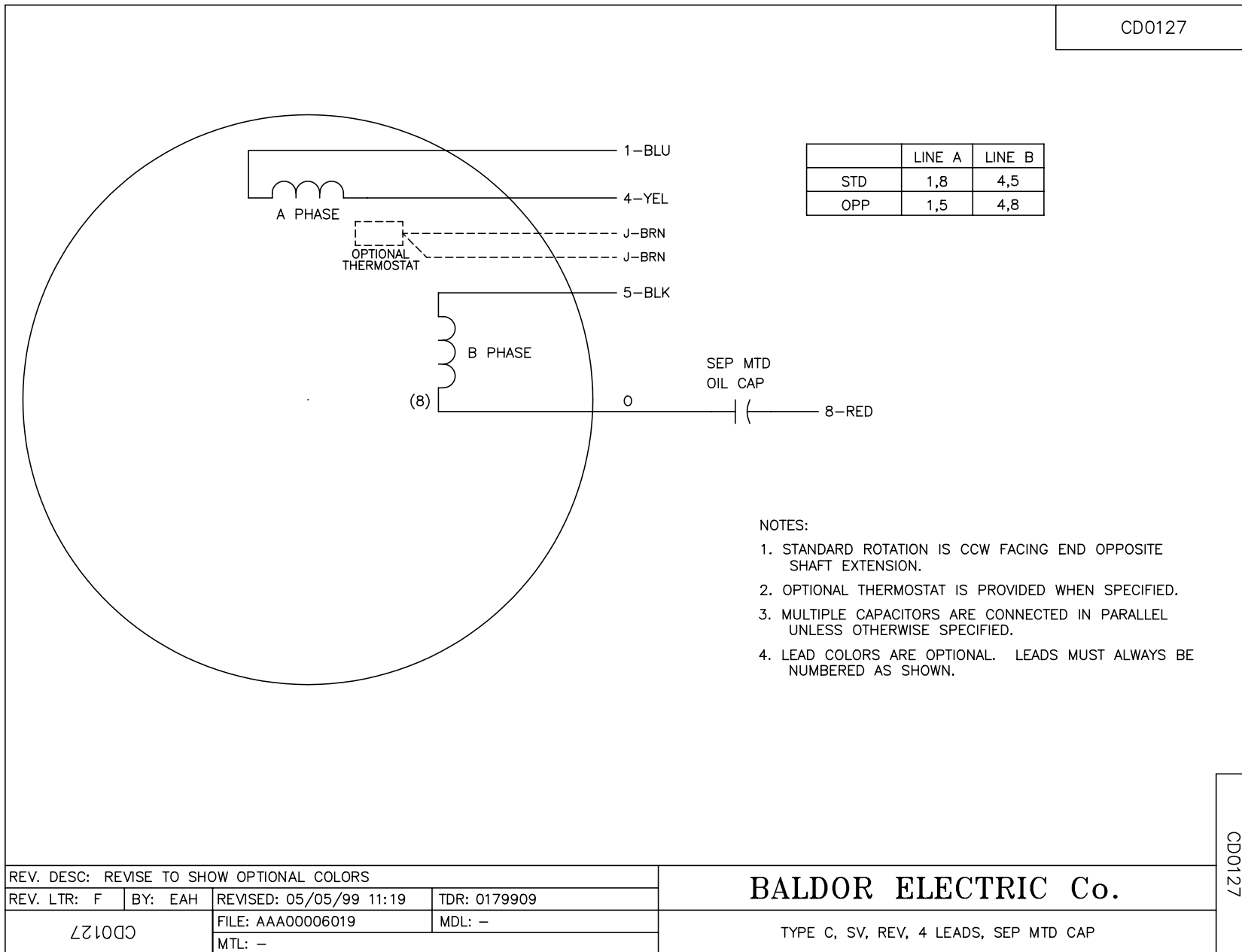




CUST. NAME		CUST. P.O.		CERTIFIED BY		MODEL		INSUL		AMB							
H.P.		MTG		TYPE		R.P.M.		VOLTS		ENCL		PHASE		FREQ		FRAME	
REMARKS:												BALDOR ELECTRIC Co.		STD HORZ 182-4TZ OPEN 36C (UNIV CROP DRYER)			
REV:		M		FR EP WAS 36EP3200A37		SCALE: .3		BY: BGM		REVISED: 10/06/97							
87548		FILE: AAA00004330		TDR: 0133185													

36F548

CD0127



REV. DESC: REVISE TO SHOW OPTIONAL COLORS			
REV. LTR: F	BY: EAH	REVISED: 05/05/99 11:19	TDR: 0179909
CD0127		FILE: AAA00006019	MDL: -
		MTL: -	

BALDOR ELECTRIC Co.

TYPE C, SV, REV, 4 LEADS, SEP MTD CAP

CD0127