

BALDOR® • RELIANCE

Product Information Packet

CEM3545

1HP,3450RPM,3PH,60HZ,56C,3516M,TEFC,F1,N

Part Detail							
Revision:	J	Status:	PRD/A	Change #:		Proprietary:	No
Type:	AC	Prod. Type:	3516M	Elec. Spec:	35WGY474	CD Diagram:	CD0005
Enclosure:	TEFC	Mfg Plant:		Mech. Spec:	35T942	Layout:	35LYT942
Frame:	56C	Mounting:	F1	Poles:	02	Created Date:	04-28-2010
Base:	RG	Rotation:	R	Insulation:	F	Eff. Date:	05-03-2016
Leads:	9#18					Replaced By:	
Literature:		Elec. Diagram:					

Nameplate NP3441LUA										
CAT.NO.	CEM3545									
SPEC.	35T942Y474G1									
HP	1									
VOLTS	230/460									
AMP	2.8/1.4									
RPM	3450									
FRAME	56C				HZ	60			PH	3
SER.F.	1.25		CODE	K	DES	B		CL	F	
NEMA-NOM-EFF	77		PF	87						
RATING	40C AMB-CONT									
CC	010A				USABLE AT 208V					3
DE	6205				ODE	6203				
ENCL	TEFC		SN							
VPWM INVERTER READY										
CT6-60H(10:1)VT3-60H(20:1										
50Hz 1HP 190/380V 3.4/1.7A									SF1.0	

AC Induction Motor Performance Data

Record # 56197 - Typical performance - not guaranteed values

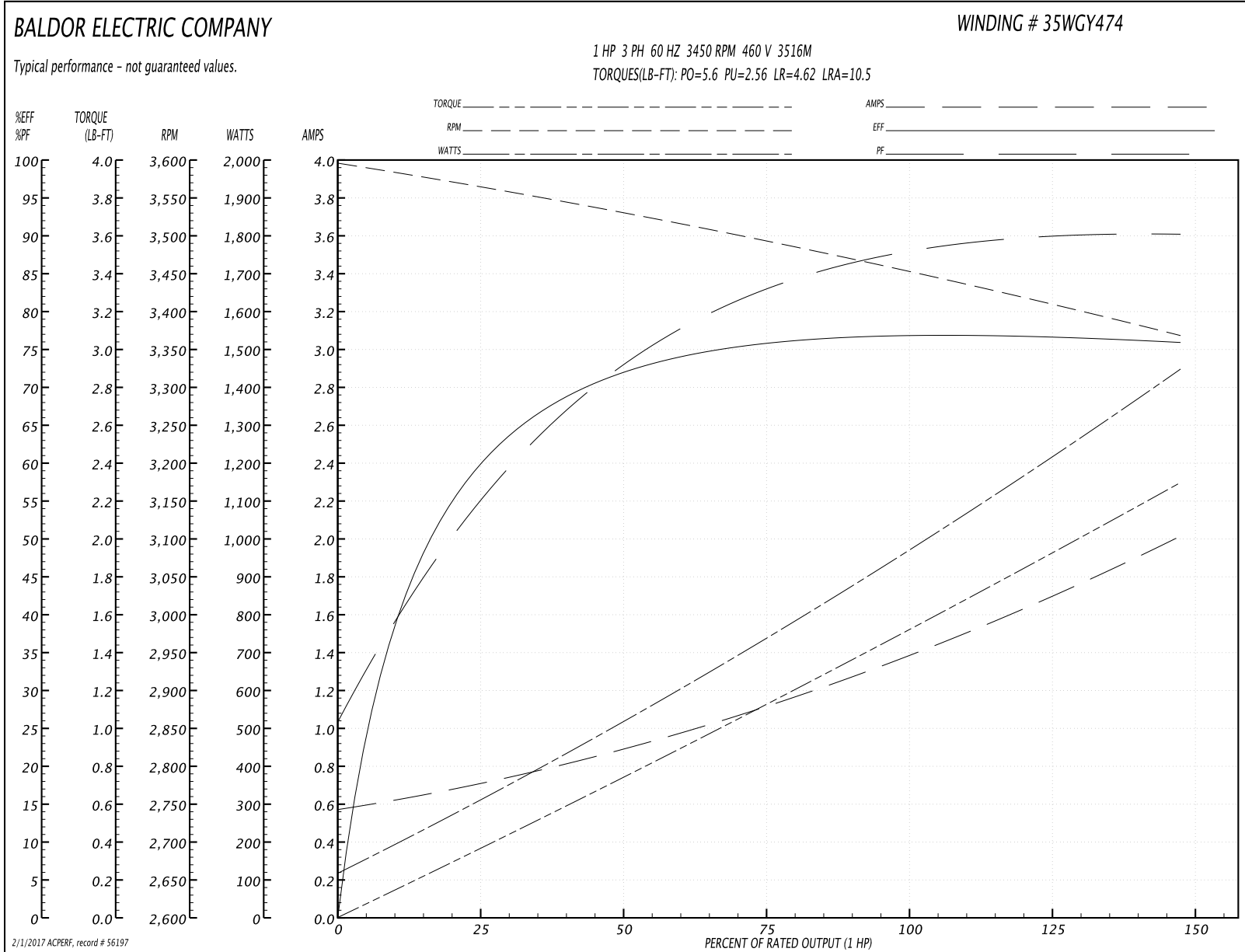
Winding: 35WGY474-R008	Type: 3516M	Enclosure: TEFC
-------------------------------	--------------------	------------------------

Nameplate Data				460 V, 60 Hz: High Voltage Connection	
Rated Output (HP)	1			Full Load Torque	1.47 LB-FT
Volts	230/460			Start Configuration	direct on line
Full Load Amps	2.8/1.4			Breakdown Torque	5.6 LB-FT
R.P.M.	3450			Pull-up Torque	2.56 LB-FT
Hz	60	Phase	3	Locked-rotor Torque	4.62 LB-FT
NEMA Design Code	B	KVA Code	K	Starting Current	10.5 A
Service Factor (S.F.)	1.25			No-load Current	0.585 A
NEMA Nom. Eff.	77	Power Factor	87	Line-line Res. @ 25°C	19.5 Ω
Rating - Duty	40C AMB-CONT			Temp. Rise @ Rated Load	41°C
S.F. Amps	3.4/1.7			Temp. Rise @ S.F. Load	52°C
				Locked-rotor Power Factor	64.1
				Rotor inertia	0.0443 LB-FT ²

Load Characteristics 460 V, 60 Hz, 1 HP

% of Rated Load	25	50	75	100	125	150	S.F.
Power Factor	55	72	82	86	90	91	90
Efficiency	57.7	70.5	75.4	77	77	75.8	77
Speed	3564	3533	3500	3460	3418	3366	3418
Line amperes	0.68	0.851	1.08	1.37	1.65	2.01	1.65

Performance Graph at 460V, 60Hz, 1.0HP Typical performance - Not guaranteed values



AC Induction Motor Performance Data

Record # 59169 - Typical performance - not guaranteed values

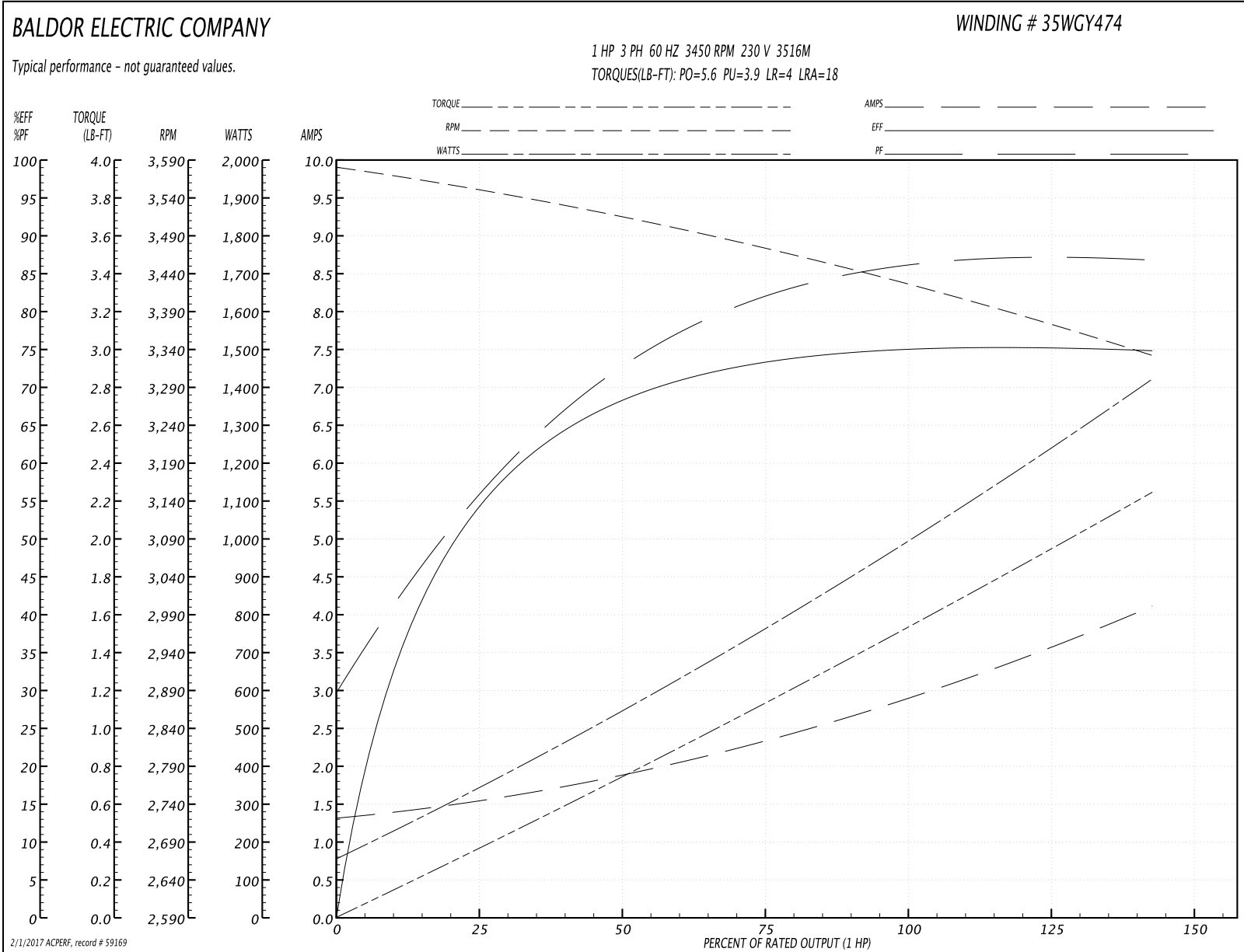
Winding: 35WGY474-R008	Type: 3516M	Enclosure: TEFC
-------------------------------	--------------------	------------------------

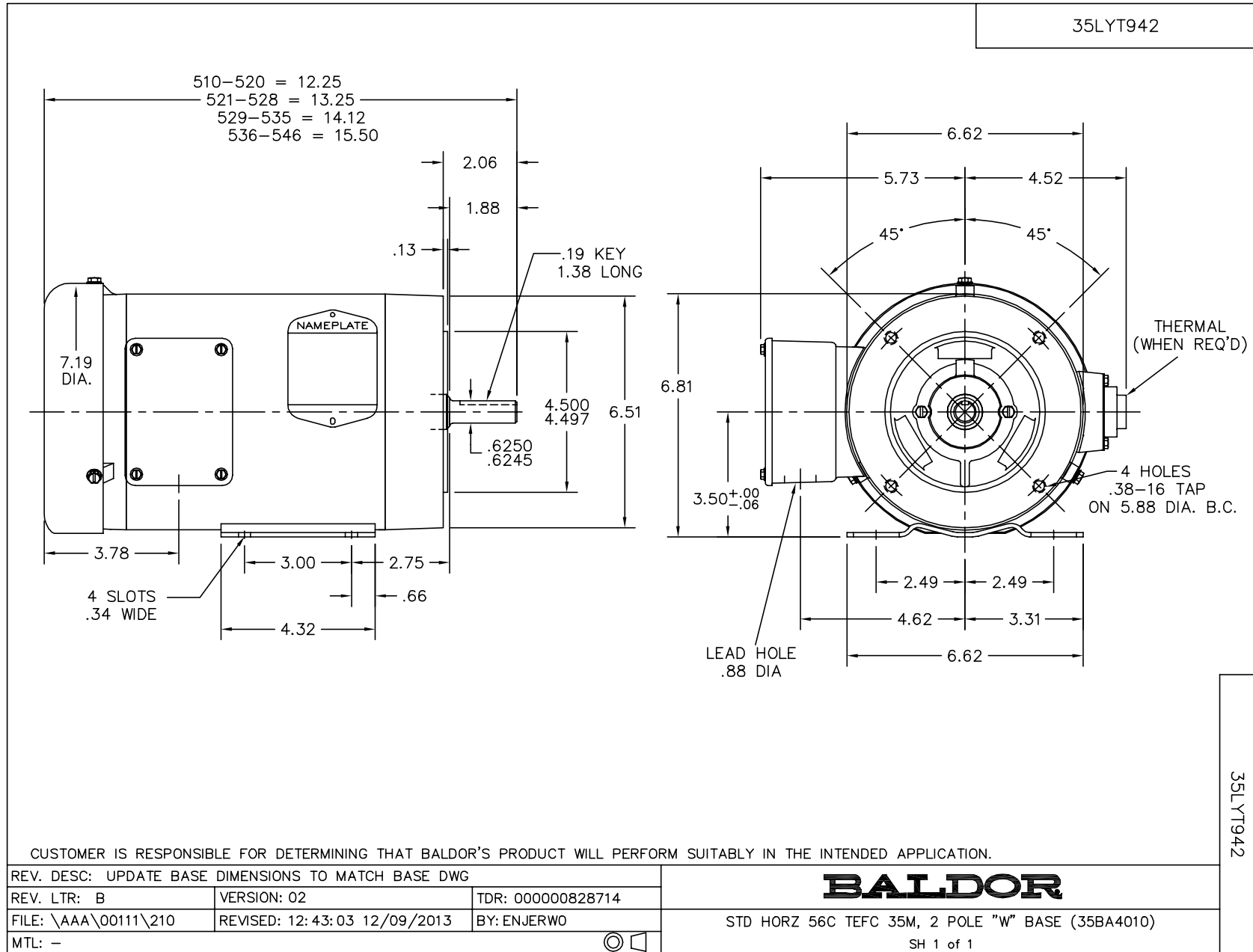
Nameplate Data				230 V, 60 Hz: Low Voltage Connection	
Rated Output (HP)	1			Full Load Torque	1.5 LB-FT
Volts	230/460			Start Configuration	direct on line
Full Load Amps	2.8/1.4			Breakdown Torque	5.6 LB-FT
R.P.M.	3450			Pull-up Torque	3.9 LB-FT
Hz	60	Phase	3	Locked-rotor Torque	4 LB-FT
NEMA Design Code	B	KVA Code	K	Starting Current	18 A
Service Factor (S.F.)	1.25			No-load Current	1.32 A
NEMA Nom. Eff.	77	Power Factor	87	Line-line Res. @ 25°C	4.88 Ω
Rating - Duty	40C AMB-CONT			Temp. Rise @ Rated Load	47°C
S.F. Amps	3.4/1.7			Temp. Rise @ S.F. Load	60°C
				Locked-rotor Power Factor	64.1
				Rotor inertia	0.0443 LB-FT ²

Load Characteristics 230 V, 60 Hz, 1 HP

% of Rated Load	25	50	75	100	125	150	S.F.
Power Factor	57	74	81	85	87	87	87
Efficiency	54	67.8	73.5	75.1	75.6	74.6	75.6
Speed	3549	3513	3474	3432	3384	3330	3384
Line amperes	1.54	1.88	2.34	2.86	3.44	4.12	3.44

Performance Graph at 230V, 60Hz, 1.0HP Typical performance - Not guaranteed values





CD0005



LOW VOLTAGE
(2Y)



LINE

HIGH VOLTAGE
(1Y)



LINE

NOTES:

1. INTERCHANGE ANY TWO LINE LEADS TO REVERSE ROTATION.
2. OPTIONAL THERMOSTATS ARE PROVIDED WHEN SPECIFIED.
3. ACTUAL NUMBER OF INTERNAL PARALLEL CIRCUITS MAY BE A MULTIPLE OF THOSE SHOWN ABOVE.
4. LEAD COLORS ARE OPTIONAL. LEADS MUST ALWAYS BE NUMBERED AS SHOWN.

REV. DESC: REVISE TO SHOW OPTIONAL COLORS			
REV. LTR: E	BY: JLP	REVISED: 01/19/99 10:15	TDR: 0171435
9000D		FILE: AAA00005140	MDL: -
		MTL: -	

BALDOR ELECTRIC Co.

3PH, DV, 9 LEADS

CD0005