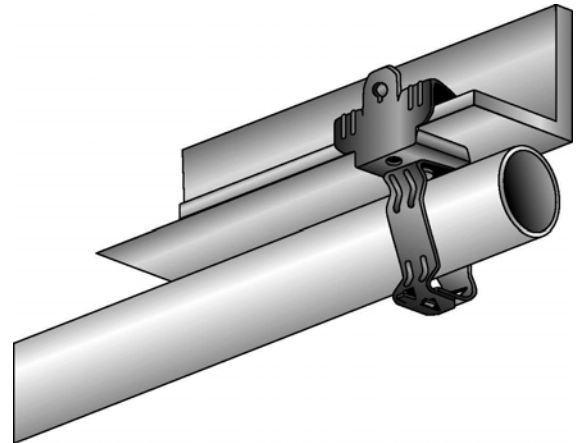
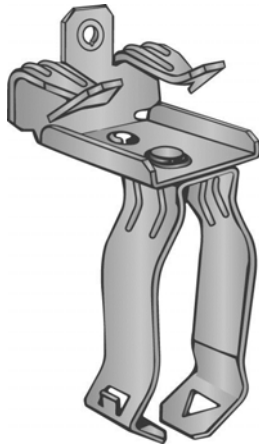


Part Number: P32M24

Product Description: BEAM CLAMP FOR 1/8" - 1/4" FLANGE WITH 2" SNAP CLOSED CONDUIT CLIP



## Material Specifications

Type: Assembly

Finish: Assembly

Color: Various

## Function Specifications

### Compatible Wires and Cables

AC/MC CABLE (OD):

Drop Wire:

Plain Rod (in):

### Threaded Rods and Bolts

Tapped Holes: 1/4"-20 BACK OF BEAM CLAMP

Clearance Holes (in):

Threaded Rod Size (in):

### Compatible Conduit

EMT Size (in): 2

Rigid/IMC (in): 2

### Compatible Flanges and Studs

Flange Size (in): 1/8 to 1/4

Metal Stud Size (ins):

### Static Load Rating

Vertical (lbs): 75

Horizontal (lbs):

### Other

## Codes and Regulatory

Regulatory  
Certifications: UL/cUL

Country of Origin: US

## Packaging

General Packaging: Cardboard Box

Box Size: 17 X 13.25 X 10

Pieces per Package: 100

Other Box Features: Hand hole handles

## Document Information

Created By: DBLA

Checked By: DJW

Approved By: KLN

Customer Specification #: C11155

Revision Level: 01

ECN #: GAECN01482

Date: 12/10/2013