

## FEATURES & SPECIFICATIONS

**INTENDED USE** — Ideal for a wide variety of low- to medium-height ceiling applications including commercial, retail and hospitality spaces where an open or damp location lensed fixture is required.

**CONSTRUCTION** — Heavy-gauge die-formed galvanized steel mounting frame with mechanical trim retention (yoke) ensures secure and flush reflector mounting to ceiling. Attached to frame are vertically adjustable mounting brackets for use with C channels, ½" steel conduit or 16 gauge flat bar hangers included, standard. Frames equipped with galvanized junction box UL Listed for through wire applications. Junction boxes equipped with (2) ¾" and (4) ½" conduit knockouts with pryout slots and removable access doors.

Maximum 1-1/2" ceiling thickness.

**OPTICS** — Aluminum full reflectors are optically designed to maximize lumen output and to provide superior glare control. Anodized finishes for open reflectors are semi-specular or diffuse in a variety of colors. Polyester powder coat finishes also are available in white.

Lenses are available in clear flat glass, tempered prismatic glass, or polycarbonate to provide optimal visual comfort and improved aesthetics. Lens is recessed 1-3/4 (4.4) from flange.

**ELECTRICAL** — Electronic ballast with end of lamp life protection standard. Class P thermally protected ballast protects against improper contact with insulation. Minimum starting temperature is 0°F/-18°C. Rated for #12 AWG conductor thru-branch wiring. Minimum 90° supply wire. Ground wire provided.

Lamp Socket Base:

DTT 4-pin lamps — 13W (G24Q-1); 18W (G24Q-2); 26W (G24Q-3)

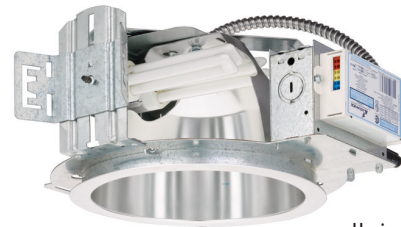
**LISTINGS** — Fixtures are UL Listed for thru-branch wiring, Non-IC recessed mounting, damp location, and to U.S. and Canadian Safety Standards.

**WARRANTY** — 1-year limited warranty. Complete warranty terms located at [www.acuitybrands.com/CustomerResources/Terms\\_and\\_conditions.aspx](http://www.acuitybrands.com/CustomerResources/Terms_and_conditions.aspx)

Note: Specifications subject to change without notice.

Catalog Number
Notes
Type

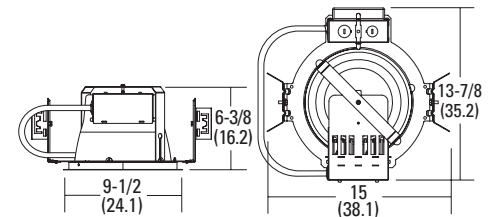
### Compact Fluorescent Downlighting



# 8" LF8N

### OPEN REFLECTOR

Horizontal, 2-Lamp Double Twin-Tube (DTT)



#### Specifications

Max. height: 6-3/8 (16.2)

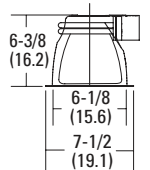
Ceiling opening: 8-3/4 (22.2)

Overlap trim: 9-1/2 (24.1)

Length: 15 (38.1)

Width: 13-7/8 (35.2)

All dimensions are inches (centimeters) unless otherwise indicated.



### ORDERING INFORMATION

For shortest lead times, configure product using **bolded options**.

**Example: LF8N 2/26DTT F802AZ MVOLT**

LF8N					
Series	Wattage/Lamp	Reflector/Color	Lens type	Voltage	Options <sup>4</sup>
<b>LF8N</b>	2/13DTT <sup>1</sup>	F802 White open	(blank) No lens	<b>MVOLT<sup>2</sup></b> 120 277 347 <sup>3</sup>	ADEZ Advance Mark 10™ electronic dimming ballast, 120V or 277V. Must be voltage specific. Minimum dimming level 5%
	2/18DTT	<b>F802A</b> Clear diffuse open	CGL Clear glass lens		ECOS Lutron EcoSystem electronic dimming ballast, 120V - 277V. Must be wattage specific. Minimum dimming level 5%
	<b>2/26DTT</b>	<b>F802AZ</b> Clear semi-specular open	T73 Tempered glass prismatic lens		<b>EL</b> Emergency PSDL3 DL battery pack with integral test switch. Lens removal required before EL testing <sup>5</sup>
		F802G Gold diffuse open	PCL Clear polycarbonate lens		<b>ELRL</b> Emergency PSDL3 DL battery pack with remote test switch <sup>5</sup>
		F802GZ Gold semi-specular open			<b>ELRHL2LP</b> Iota I-162 Emergency battery pack with remote test switch. Operates two 26W CFL lamps in emergency mode with battery back-up in case of power disruption. Average lumen output is 2600 <sup>6</sup>
		F802PR Pewter diffuse open			GMF Single slow-blow fuse, must specify voltage
		F802WTZ Wheat semi-specular open			BDP Ballast disconnect plug (meets codes that require in-fixture disconnect) <sup>3</sup>
					WLP 35K lamp (shipped separately)
					TRW White flange
					RIF1 Radio interference filter
					LBH Less barhangers

#### Accessories: Order as separate catalog number.

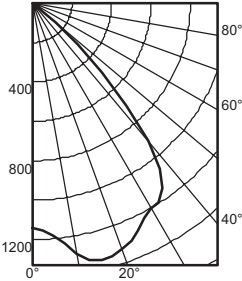
SCA8	Sloped ceiling adaptor. Degree of slope must be specified (10D, 15D, 20D, 25D, 30D) Ex: SCA8 <b>10D</b> .
CTE8	Ceiling thickness extender is used when ceiling thickness is greater than 1-1/2 (3.8). Maximum thickness 2 (5.1).

#### Notes

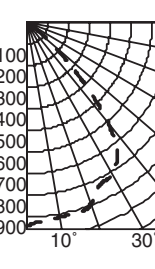
- Not available with ADEZ and ECOS.
- Electronic multi-volt ballast capable of operating any line voltage from 120-277V, 50 or 60Hz.
- Not available with EL or ELR.
- For additional options see [www.lithonia.com](http://www.lithonia.com).
- Ships standard for 1-lamp operation. For 2-lamp emergency operation, consult installation instructions or factory. Add 3" (7.6) to width and 4-1/2" (11.4) to length.
- Not recommended for field installation.

# 8" LF8N Horizontal, 2-Lamp Double Twin-Tube (DTT), Open

## PHOTOMETRICS

Distribution Curve	Distribution Data		Output Data			Coefficient of Utilization						Illuminance Data at 30" Above Floor for a Single Luminaire									
LF8N 2/26DTT F802AZ MVOLT, (2) 26W DTT lamps, 1.3 s/mh, 1800 rated lumens, test no. LTL9580																					
	Ave Lumens		Zone	Lumens	% Lamp	pf	80%			20% 70%			50%			50% beam - 72.9° 10% beam - 93.7°  Initial FC Mounting Height    Center Beam    Diameter    FC    Diameter    FC 8.0    37.7    8.1    18.9    11.7    3.8 10.0    20.3    11.1    10.1    16.0    2.0 12.0    12.6    14.0    6.3    20.3    1.3 14.0    8.6    17.0    4.3    24.5    0.9 16.0    6.3    19.9    3.1    28.8    0.6					
						pc	50%	30%	10%	50%	30%	10%	50%	30%	10%						
						pw															
		0	1141	0° - 30°	1080.6	30.0	0	73	73	73	71	71	71	68	68	68					
		5	1184	117	0° - 40°	1776.5	49.3	1	67	65	64	66	64	63	63	62	61				
		15	1352	379	0° - 60°	2199.6	61.1	2	62	59	56	61	58	56	58	56	55				
		25	1272	585	0° - 90°	2203.6	61.2	3	57	53	50	56	52	50	54	51	49				
		35	1146	696	90° - 180°	0.0	0.0	4	52	48	45	51	48	45	50	47	44				
		45	499	386	0° - 180°	2203.6	*61.2	5	48	44	41	47	43	40	46	43	40				
		55	22	37	*Efficiency			6	44	40	37	43	39	37	42	39	36				
		65	3	3				7	41	36	33	40	36	33	39	36	33				
	75	1	1				8	38	33	30	37	33	30	37	33	30					
	85	0	0				9	35	31	28	35	31	28	34	30	28					
	90	0				10	32	28	26	32	28	26	32	28	26						

LF8N 2/26DTT F802AZ CGL MVOLT, (2) 26W DTT Lamps, 1825 rated lumens per lamp, 1.4 s/mh, Test No. LTL15077

	0°		Zone	Lumens % Lamp		pf	20%					
	0°	936	0° - 30°	847	23.2	pc	80%		70%		50%	
	100	5° 921	0° - 40°	1360	37.3	pw	50%	30%	50%	30%	50%	30%
	200	15° 916	0° - 60°	1704	46.7	0	56	56	55	55	52	52
	300	25° 830	0° - 90°	1721	47.1	1	52	50	51	49	49	48
	400	35° 751	90° - 180°	0	0.0	2	47	45	46	44	45	43
	500	45° 361	0° - 180°	1721	47.1	3	43	41	43	40	41	39
	600	55° 49	Efficiency: 47.1%			4	40	37	39	36	38	36
	700	65° 12				5	37	33	36	33	35	33
	800	75° 3				6	34	30	33	30	33	30
	900	85° 1				7	31	28	31	28	30	27
	90° 0				8	29	26	28	25	28	25	
					9	27	24	26	23	26	23	
					10	25	22	25	22	24	21	
Task Height: 2.5ft.												
50% beam - 69.5°      10% beam - 93.3°												
Initial fc												
Mtg	Center											
Ht	Beam	Diameter	fc	Diameter	fc							
8	30.9	8	15	12	3							
10	16.6	10	8	16	2							
12	10.4	13	5	20	1							
14	7.1	16	4	24	1							
16	5.1	19	3	29	1							

### Notes

Energy (Calculated in accordance with NEMA Standard LE-5)

Actual performance may differ as a result of end-user environment and application.