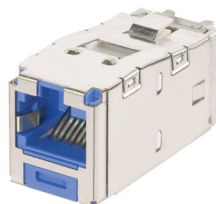


# Mini-Com® TX6A™ 10Gig™ Keyed Shielded Jack Modules

## SPECIFICATIONS

Category 6A/Class E<sub>A</sub>, 8-position, keyed shielded jack module shall terminate 4-pair, 22 – 26 AWG, 100 ohm shielded twisted pair cable without the use of a punchdown tool. The jack module shall be mechanically keyed with color-specific positive and negative keying features to prevent unintentional mating with unlike keyed or non-keyed modular plugs. Shielded jack modules shall use a forward motion termination method to optimize performance by maintaining cable pair geometry while eliminating conductor untwist. The termination cap shall be color-coded blue to designate Category 6A performance and shall include a universal label coded for T568A and T568B wiring schemes.

The Mini-Com® TX6A™ 10Gig™ Shielded Jack Module must be installed as part of the TX6A™ 10Gig™ Shielded Copper Cabling System to achieve IEEE 10GBASE-T certified performance.



## TECHNICAL INFORMATION

<b>Category 6A/Class E<sub>A</sub> channel and component performance:</b>	Exceeds channel requirements of ANSI/TIA-568-C.2 Category 6A and IISO 11801 Class E <sub>A</sub> standards for supporting 10GBASE-T transmission over twisted pair cabling systems in a 4-conductor configuration up to 100 meters at swept frequencies 1 to 500 MHz  Exceeds component requirements of ANSI/TIA-568-C.2 Category 6A and ISO 11801 Class E <sub>A</sub> standards at swept frequencies 1 to 500 MHz
<b>FCC and ANSI compliance:</b>	Meets all applicable ANSI/TIA-968-A requirements; contacts plated with 50 microinches of gold for superior performance
<b>IEC compliance:</b>	Meets IEC 60603-7
<b>PoE compliance:</b>	Meets IEEE 802.3af and IEEE 802.3at for PoE applications
<b>c(UL)US listed:</b>	UL 1863, CSA standard C22.2
<b>RoHS compliance:</b>	Compliant
<b>Conductor termination range:</b>	Wire cap compatible with 22 – 26 AWG solid or stranded cable with conductor insulation diameters of 0.06 in. (1.52mm) max and overall cable O.D. 0.2 in. to 0.33 in. (5.08mm to 8.38mm)

## KEY FEATURES AND BENEFITS

<b>100% Performance tested:</b>	Confidence that each jack module will deliver the critical electrical performance requirements
<b>Utilizes enhanced Giga-TX™ Technology:</b>	Optimizes performance by eliminating conductor untwist and reduces installation time and expense
<b>Integral shield:</b>	Provides a 360° conductive path to ground shielded jack module with no additional assembly required; shield provides seamless bonding of the jack module with Mini-Com® All Metal Modular Patch Panels
<b>Modular:</b>	Shielded jack modules snap in and out of all Mini-Com® Faceplates, Metal Modular Patch Panels and Surface Mount Boxes for easy moves, adds, and changes
<b>Individually serialized:</b>	Marked with quality control number for future traceability

## APPLICATIONS

The TX6A 10Gig Keyed Shielded Jack Modules are components of the TX6A 10Gig Shielded Copper Cabling System, offering visual and mechanical differentiation for enhanced security. This end-to-end solution ensures current and future bandwidth demands are easily met, providing high performance, EMI suppression, and secure data transmission. Certified to ISO 11801 Class E<sub>A</sub> Edition 2.1, IEEE 802.3an-2006, and ANSI/TIA-568-C.2 Category 6A standards, it supports various high-bandwidth applications including data centers, high-end workstations, storage area networks, and real-time transactions, enabling organizations to efficiently meet their data transmission needs with reliability.

### Mini-Com TX6A 10Gig Keyed Shielded Jack Modules

<b>Keyed A (black):</b>	CJSK6X88TGBL
<b>Keyed B (red):</b>	CJSK6X88TGRD
<b>Keyed C (green):</b>	CJSK6X88TGGR
<b>Keyed D (yellow):</b>	CJSK6X88TGYL
<b>Keyed E (orange):</b>	CJSK6X88TGOR
<b>Keyed F (blue):</b>	CJSK6X88TGBU

### TX6A™ 10Gig™ Keyed Shielded Patch Cords

<b>Keyed A (black):</b>	STPK6X*BL
<b>Keyed B (red):</b>	STPK6X*RD
<b>Keyed C (green):</b>	STPK6X*GR
<b>Keyed D (yellow):</b>	STPK6X*YL
<b>Keyed E (orange):</b>	STPK6X*OR
<b>Keyed F (blue):</b>	STPK6X*BU

### Mini-Com® Flat All Metal Modular Patch Panels

<b>24-port, 1 RU:</b>	CP24BLY
<b>48-port, 2 RU:</b>	CP48BLY

### Tools and Accessories

<b>Jack module termination tool:</b>	EGJT-1 or TGJT
<b>Wire snipping tool:</b>	CWST
<b>Wire stripping tool:</b>	CJAST
<b>Clear dust cap:</b>	MDC-C
<b>Phone icons:</b>	CIPW-C
<b>Data icons:</b>	CID++-C

\*Foot lengths: 3, 5, 7, 10, and 14 feet  
++Colors: WH (White), BU (Blue), RD (Red), YL (Yellow), GR (Green), OR (Orange)



All listed part numbers are compliant with the U.S. Trade Agreements Act (TAA) for purchases shipped to customers in the United States.

# Mini-Com® TX6A™ 10Gig™ Keyed Shielded Jack Modules

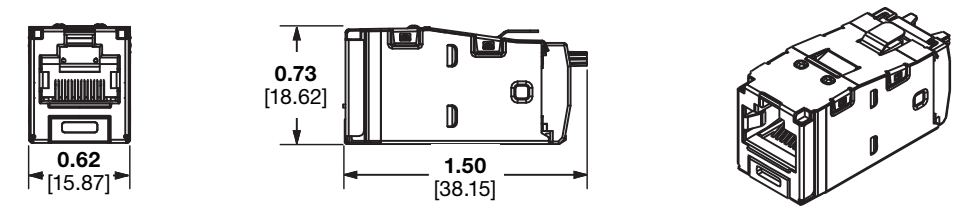
## TEST RESULTS

Mechanical Test	Test Method	Measurement	Test Results
Normal Force	—	Load (grams)	> 100
Vibration	IEC 512-6d	Circuit Resistance (mOhms)	< 40
Shock	IEC 512-6c	Contact Disturbance (microseconds)	< 5
Durability	IEC 512-9a	Circuit Resistance (mOhms)	< 40
Mating/Un-mating	IEC 512-13b	Mating Force (N)	< 20
		Un-mating Force (N)	

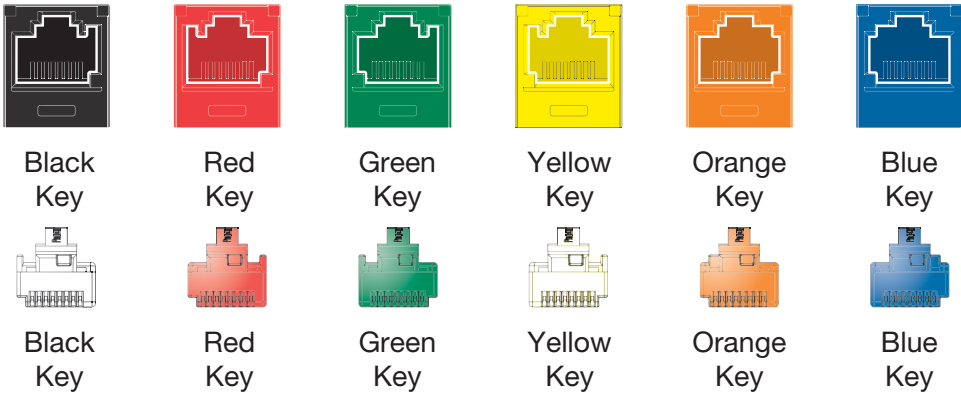
Electrical Test	Test Method	Measurement	Test Results
Low Level Circuit Resistance	IEC 512-2a	Resistance (mOhms)	< 20
Dielectric Withstand Voltage	IEC 512-4a	1000 VAC, 1 minute	Passed
Insulation Resistance	IEC 512-3a	Resistance (mOhms)	> 500

Environmental	Test Method	Measurement	Test Results
Temperature Life	IEC 512-9b	Circuit Resistance (mOhms)	< 40
Humidity	IEC 512-11c		
Thermal Shock	IEC 512-11d		
Climatic Sequence	IEC 512-11a		
Flowing Mixed Gas Corrosion	IEC 512-11g		

## ENGINEERING DRAWINGS



## KEYED GEOMETRY



Dimensions are in inches. [Dimensions in brackets are metric].

### WORLDWIDE SUBSIDIARIES AND SALES OFFICES

PANDUIT US/CANADA Phone: 800.777.3300	PANDUIT EUROPE LTD. London, UK Phone: 44.20.8601.7200	PANDUIT SINGAPORE PTE. LTD. Republic of Singapore Phone: 65.6305.7575	PANDUIT JAPAN Tokyo, Japan Phone: 81.3.6863.6000	PANDUIT LATIN AMERICA Guadalajara, Mexico Phone: 52.33.3777.6000	PANDUIT AUSTRALIA PTY. LTD. Victoria, Australia Phone: 61.3.9794.9020
--	---	---	--	--	---

For a copy of Panduit product warranties, log on to [www.panduit.com/warranty](http://www.panduit.com/warranty)



For more information  
Visit us at [www.panduit.com](http://www.panduit.com)  
Contact Customer Service by email: [cs@panduit.com](mailto:cs@panduit.com)  
or by phone: 800.777.3300

© 2024 Panduit Corp.  
ALL RIGHTS RESERVED.  
COSP154-WW-ENG  
7/2024