

BALDOR® • *RELIANCE*

Product Information Packet

CEM7037T

2//1.5HP,1755//1455RPM,3PH,60//50HZ,145T

Part Detail							
Revision:	P	Status:	PRD/A	Change #:		Proprietary:	No
Type:	AC	Prod. Type:	3530M	Elec. Spec:	35WGM494	CD Diagram:	CD0005
Enclosure:	XPFC	Mfg Plant:		Mech. Spec:	35E377	Layout:	35LYE377
Frame:	145TC	Mounting:	F1	Poles:	04	Created Date:	07-30-2010
Base:	RG	Rotation:	R	Insulation:	B	Eff. Date:	01-19-2017
Leads:	9#18					Replaced By:	
Literature:		Elec. Diagram:					

Nameplate NP1426XPSLEV	
NO.	<input type="text"/> CC 010A
SER.	<input type="text"/>
SPEC.	35E377M494G1
CAT.NO.	CEM7037T
HP	2//1.5 T. CODE T3C
VOLTS	230/460//190/380
AMPS	5.8/2.9//5.6/2.8
RPM	1755//1455
HZ	60//50 PH 3 CL B
SER.F.	1.00 DES B CODE L
RATING	40C AMB-CONT
FRAME	145TC NEMA-NOM-EFF 86.5
USABLE AT 208V	6 PF 73
BLANK	<input type="text"/>

AC Induction Motor Performance Data

Record # 33835 - Typical performance - not guaranteed values

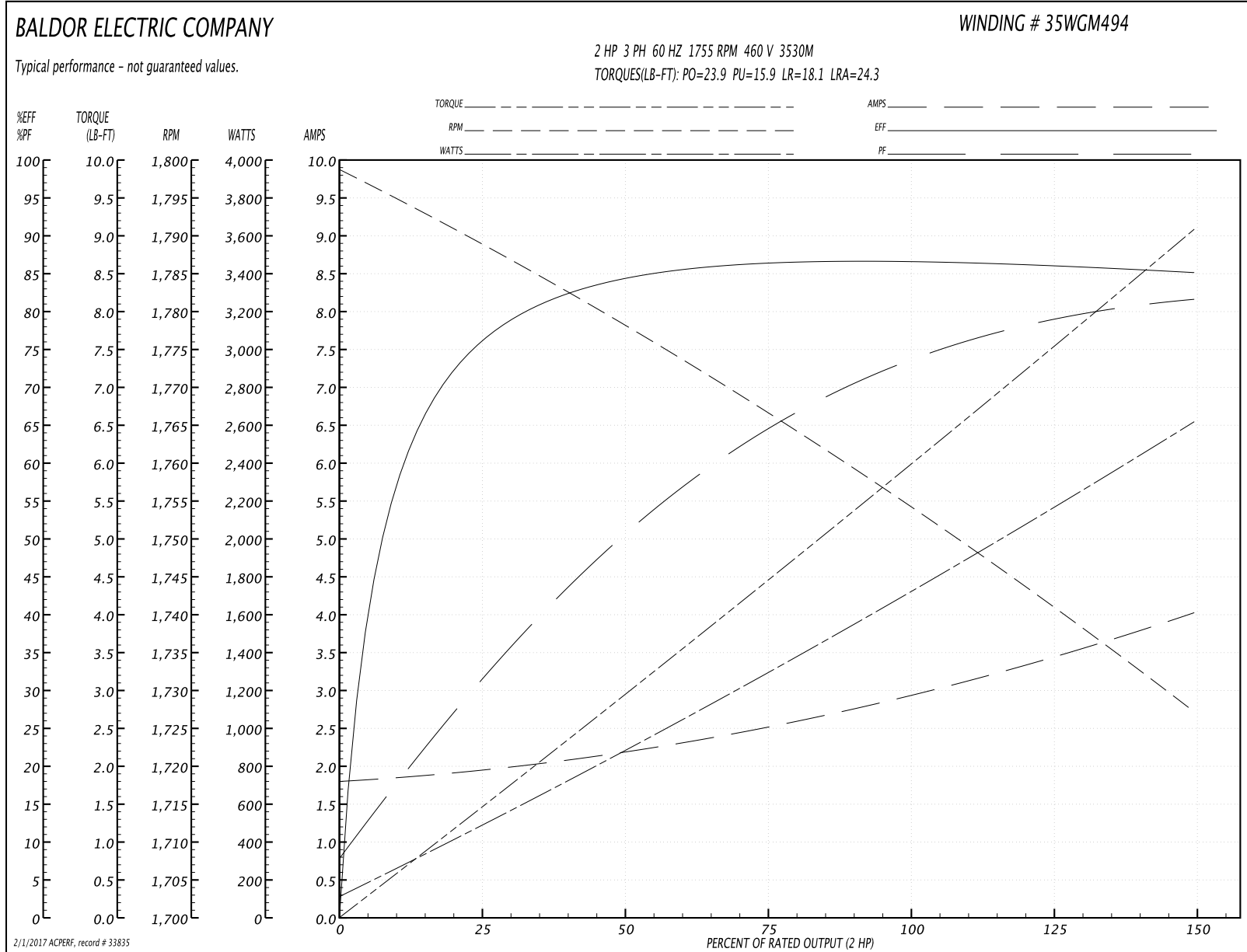
Winding: 35WGM494-R004	Type: 3530M	Enclosure: XPFC
-------------------------------	--------------------	------------------------

Nameplate Data				460 V, 60 Hz: High Voltage Connection	
Rated Output (HP)	2//1.5			Full Load Torque	5.95 LB-FT
Volts	230/460//190/380			Start Configuration	direct on line
Full Load Amps	5.8/2.9//3.6/2.8			Breakdown Torque	23.9 LB-FT
R.P.M.	1755//1455			Pull-up Torque	15.9 LB-FT
Hz	60//50	Phase	3	Locked-rotor Torque	18.1 LB-FT
NEMA Design Code	B	KVA Code	L	Starting Current	24.3 A
Service Factor (S.F.)	1.15			No-load Current	1.82 A
NEMA Nom. Eff.	86.5	Power Factor	73	Line-line Res. @ 25°C	7.42 Ω
Rating - Duty	40C AMB-CONT			Temp. Rise @ Rated Load	61°C
S.F. Amps				Temp. Rise @ S.F. Load	73°C
				Locked-rotor Power Factor	50
				Rotor inertia	0.177 LB-FT ²

Load Characteristics 460 V, 60 Hz, 2 HP

% of Rated Load	25	50	75	100	125	150	S.F.
Power Factor	32	51	64	73	79	82	77
Efficiency	75.4	84	86.5	86.7	86.1	85.1	86.3
Speed	1789	1778	1767	1755	1741	1727	1747
Line amperes	1.92	2.17	2.51	2.94	3.46	4.01	3.25

Performance Graph at 460V, 60Hz, 2.0HP Typical performance - Not guaranteed values



AC Induction Motor Performance Data

Record # 33836 - Typical performance - not guaranteed values

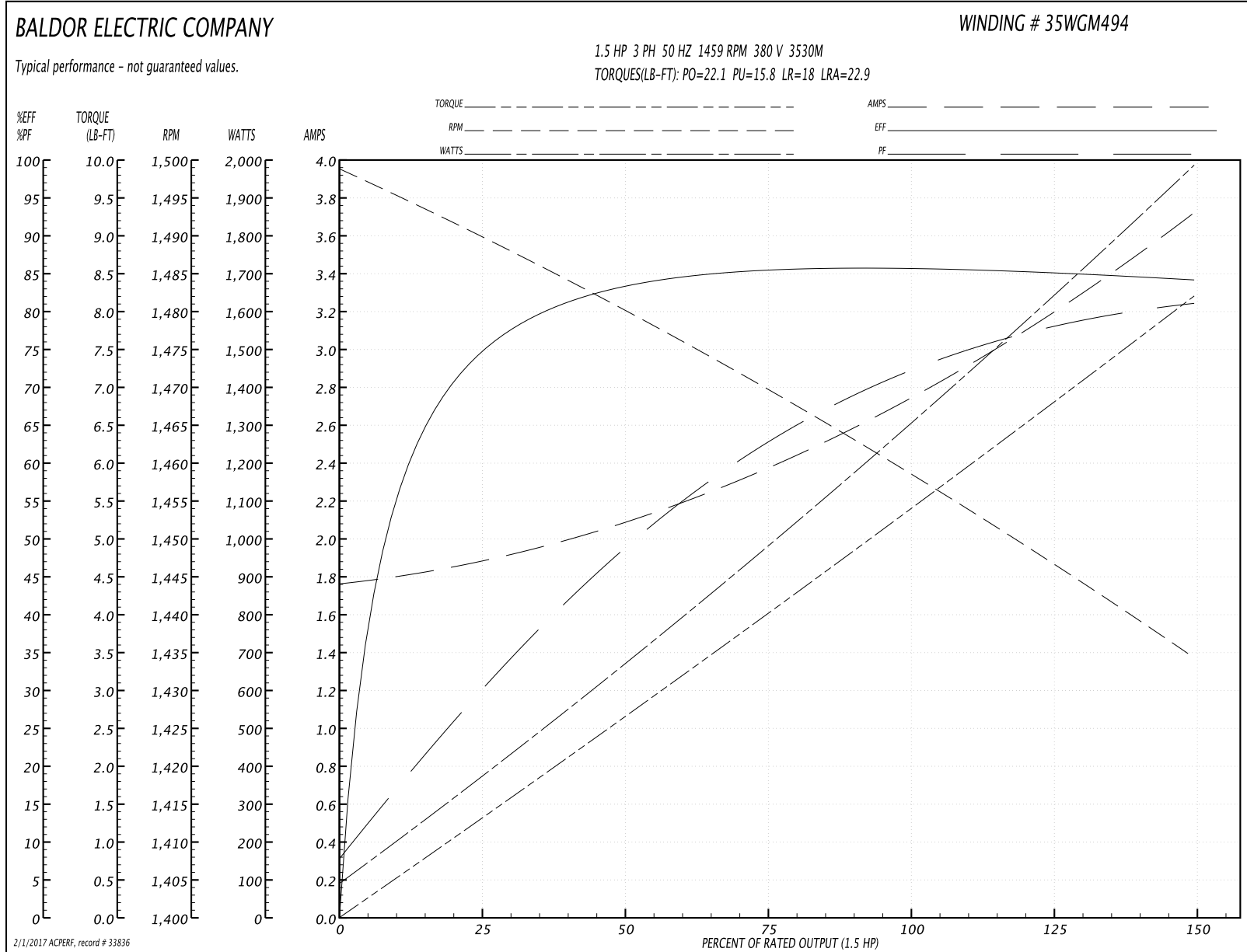
Winding: 35WGM494-R005	Type: 3530M	Enclosure: XPFC
-------------------------------	--------------------	------------------------

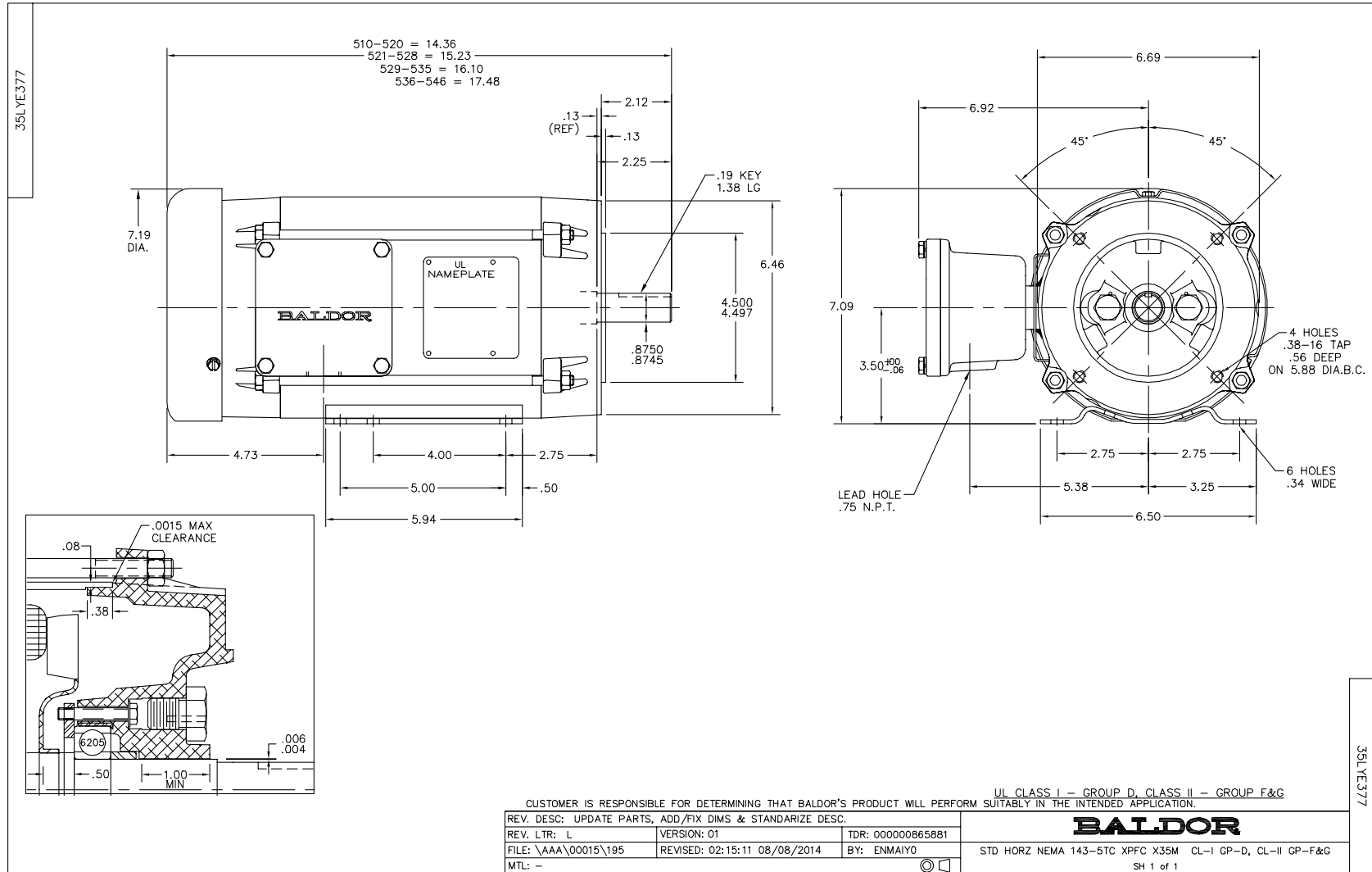
Nameplate Data				380 V, 50 Hz: High Voltage Connection	
Rated Output (HP)	2//1.5			Full Load Torque	5.37 LB-FT
Volts	230/460//190/380			Start Configuration	direct on line
Full Load Amps	5.8/2.9//3.6/2.8			Breakdown Torque	22.1 LB-FT
R.P.M.	1755//1455			Pull-up Torque	15.8 LB-FT
Hz	60//50	Phase	3	Locked-rotor Torque	18 LB-FT
NEMA Design Code	B	KVA Code	L	Starting Current	22.9 A
Service Factor (S.F.)	1			No-load Current	1.78 A
NEMA Nom. Eff.	86.5	Power Factor	73	Line-line Res. @ 25°C	7.42 Ω
Rating - Duty	40C AMB-CONT			Temp. Rise @ Rated Load	55°C
				Locked-rotor Power Factor	55
				Rotor inertia	0.177 LB-FT ²

Load Characteristics 380 V, 50 Hz, 1.5 HP

% of Rated Load	25	50	75	100	125	150
Power Factor	30	49	62	72	78	81
Efficiency	74.2	82.9	85.5	85.8	85.2	84.1
Speed	1490	1480	1470	1459	1447	1434
Line amperes	1.86	2.07	2.37	2.75	3.21	3.71

Performance Graph at 380V, 50Hz, 1.5HP Typical performance - Not guaranteed values





CD0005

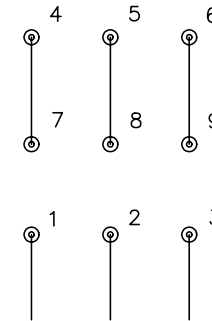


LOW VOLTAGE
(2Y)



LINE

HIGH VOLTAGE
(1Y)



LINE

NOTES:

1. INTERCHANGE ANY TWO LINE LEADS TO REVERSE ROTATION.
2. OPTIONAL THERMOSTATS ARE PROVIDED WHEN SPECIFIED.
3. ACTUAL NUMBER OF INTERNAL PARALLEL CIRCUITS MAY BE A MULTIPLE OF THOSE SHOWN ABOVE.
4. LEAD COLORS ARE OPTIONAL. LEADS MUST ALWAYS BE NUMBERED AS SHOWN.

REV. DESC: REVISE TO SHOW OPTIONAL COLORS			
REV. LTR: E	BY: JLP	REVISED: 01/19/99 10:15	TDR: 0171435
9000D		FILE: AAA00005140	MDL: -
		MTL: -	

BALDOR ELECTRIC Co.

3PH, DV, 9 LEADS

CD0005