

## Non-Metallic Sheathed Cable Fittings

### All-Plastic Connector for NM Cable and Flexible Cord



Snap captive locking wedge into connector's cavity.



Press locking wedge into cavity that locks onto cable.



Cat. No. 3201-TB is ideal for multiple flexible cords and cable.

- High-impact thermoplastic: UL94V-1
- Features push-in design
- Captive locking wedge secures cable with single squeeze of standard electrician's pliers
- Provides excellent insulation, strain-relief and high pull-out value



CAT. NO.	DESCRIPTION
3300	For use with 10-2, 12-2 and 14-2 NM cables; 18-2 and 18-3 SJ and SJO cords and 18-2 SV, SVO, SJT and SJTO cords, single or multiple; cord capacity .125-.300" diameter
3201-TB	For use with 10-3, 12-3, 14-3, 10-2, 12-2, 4-2 NM cables; multiple (2) 12-2 and 14-2 NM cables; single and multiple flexible cords in wire range .300-.600"
3202	For use with 8-3 and 6-3 NM cables; (2) 14-3, 14-2, 12-2 and 10-2 NM cables; single and multiple flexible cords in wire range .500-.850"

Temperature Rating: 105° C. CSA File Nos. 584 and 2884. UL File No. E-17583.

#### Dimensions

CAT. NO.	KO SIZE (IN.)	FIG.	DIMENSIONS (IN.)					MAX. THK. ENCLOSURE	H (IN.)	STD. CTN.
			A	B	C	D	E			
3300	½	2	1 ½/32	1 ¼/16	¾/8	.880	.795	.080	5/16 X 9/16	500
3201-TB	½	1	1 11/32	1	7/16	.880	.795	.080	2 1/32 dia.	500
3202	¾	1	1 ½	1 ¼/16	7/16	1.100	1.005	.090	7/8 dia.	250

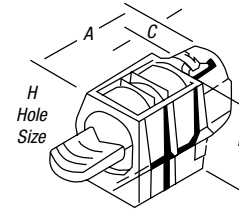


Fig. 1

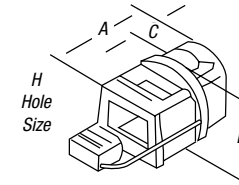


Fig. 2

## Hit Lock® Connectors

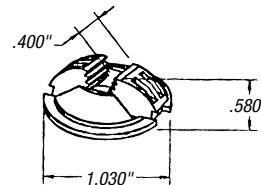


NC-501-SC

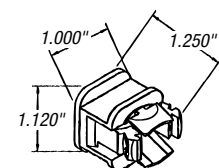


CAT. NO.	DESCRIPTION	STD. CTN.
NC-501SC	½" Hit Lock® Connector	500
NC-501DBL-SC	½" Double Hit Lock® Connector	500
NC-502SC	¾" Hit Lock® Connector	100
SB1216-SC	Twist It Bushing For Metal Studs	50

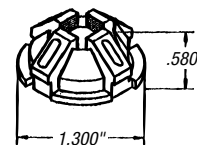
UL File No. E-17583.



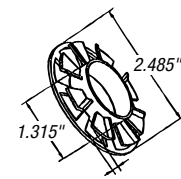
NC-501-SC



NC-501DBL-SC



NC-502-SC



SB1216-SC