

Pan-Way® LD Surface Raceway System

SPECIFICATIONS

LD non-metallic series low voltage, one-piece hinged design, single channel surface raceway includes adhesive backing and is made of impact resistant material with a smooth finish that will not scratch, peel, or corrode. The raceway includes an assortment of bend radius and standard fittings that complement the offering to help route, protect, and conceal low voltage data, voice, and video cabling. LD raceway is available in three sizes and three standard colors that are optimized for use with the Panduit® Pan-Net® communication system.



TECHNICAL INFORMATION

Material:	Rigid PVC
Flammability:	UL94V-0; FT4
Voltage Rating:	50V or less
Capacity:	Single channel
Operating and Storage Temperature:	0° to 50°C

KEY FEATURES AND BENEFITS

1" bend radius control fittings:	Cables in the raceway will satisfy the minimum 1" bend radius requirement, preventing the potential degradation of cable performance; meets TIA/EIA standards
One-piece hinged design:	Cables can be laid into the raceway, speeding installation and preventing damage to cables
Adhesive backing:	Full length adhesive strip allows easy tool free installation Please refer to part drawing for best practices of installation
Non-metallic construction:	Lightweight, reducing installer fatigue and labor required to install the raceway; solid color throughout will not chip, peel, rust or corrode; easy to cut with standard saws and saw blades, eliminating the need for special cutting devices
Distinct colors:	Available in three standard colors- IW, EI, WH Raceway is field paintable to match walls and surrounding décor
Full selection of fittings and surface mount boxes:	Wide variety of fittings and surface mount boxes available for various LD raceway applications

APPLICATIONS

Pan-Way LD Surface Raceways are designed to provide easy and economical solutions for routing any low voltage cable along smooth and clean perimeter walls, baseboards or ceilings. This raceway is a perfect solution for schools, hospitals, offices, homes or anywhere a small, secure, low profile raceway is needed.

LD Raceway	
Raceways:	LD3*+-A LD5*+-A LD10*+-A

LD Raceway Fittings	
Coupler LD10:	CF10*-X
Coupler LD3/LD5:	CF^*-E
Inside corner:	ICFC^*-X
Outside Corner LD10:	OCFC10*-X
Bend Radius Outside Corner:	OCFX^*-X
Right angle:	RAFC^*-X
End cap LD10:	ECF10*-X
End cap LD3/LD5:	ECF^*-E
Tee:	TFC^*-X
Drop ceiling/entrance end:	DCF^*-X
Right angle/entrance end:	RAEFX^*-X

LD Raceway Surface Mount Outlet/Junction Boxes

Low Voltage	
Single gang, two-piece:	JBX3510*-A
Power Rated	
Single gang, two-piece:	JBP1*
Single gang, two-piece, deep:	JBP1D*
Single gang, two-piece, extension:	JBP1E*
Single gang, two-piece, intermediate:	JBP1I*
Single gang, two-piece, snap on:	JBP1FS*
Single gang, two-piece, round:	RJBX3510*
Double gang, two-piece:	JBP2*
Double gang, two-piece, deep:	JBP2D*
Double gang, two-piece, divided:	JBP2S*
Double gang, two-piece, snap on:	JBP2FS*

*Colors: IW (Off White), (EI) Electrical Ivory, or (WH) White

^Raceway Sizes: 3 ft., 5, ft. or 10 ft.

+Raceway Lengths: 6 ft., 8 ft. or 10 ft.

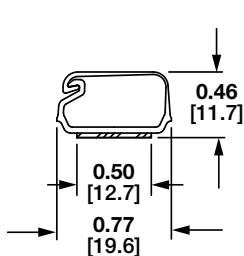
Pan-Way® LD Surface Raceway System

WIRE FILL

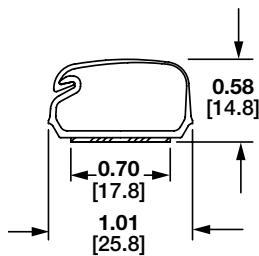
Raceway Type and Configuration	Fill Area (in ²)	Electrical Cables			Data Grade Cables 24 AWG/UTP CM								Audio/Video		Fiber Optic Cable	
		14 AWG	12 AWG	10 AWG												
		THHN/T90			Cat. 5e - Plenum		Cat. 6		Cat. 6A		Cat. 6A (SD)		RG6		2 Strand	
		0.111	0.130	0.164	DIA = 0.193		DIA = 0.24		DIA = 0.30		DIA = 0.24		DIA = 0.275		DIA = 0.175	
		FILL			FILL		FILL		FILL		FILL		FILL		FILL	
		MAX	MAX	MAX	SPEC	MAX	SPEC	MAX	SPEC	MAX	SPEC	MAX	SPEC	MAX	SPEC	MAX
		(UL Temp Rise Test)			(40%)	(60%)	(40%)	(60%)	(40%)	(60%)	(40%)	(60%)	(40%)	(60%)	(40%)	(60%)
LD3	0.21	**	**	**	2	4	1	2	1	1	1	2	1	2	3	5
LD5	0.38	**	**	**	5	7	3	5	2	3	3	5	2	3	6	9
LD10	1.00	**	**	**	13	20	8	13	5	8	8	13	6	10	16	24

For all cable options please find the Raceway cable fill calculator at www.panduit.com/calculators

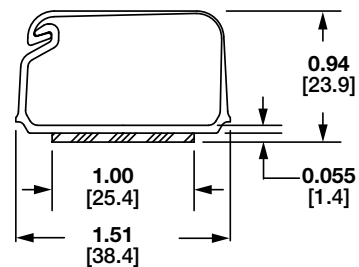
LD RACEWAY



LD3



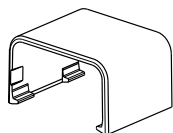
LD5



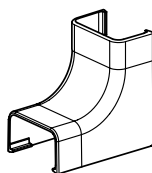
LD10

Dimensions are in inches. [Dimensions in brackets are metric].

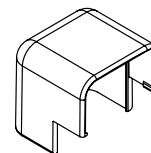
FITTINGS



CF



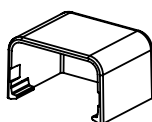
ICFC



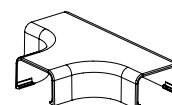
OCFC



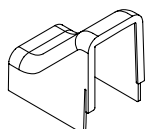
RAFC



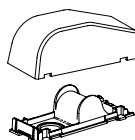
ECF



TFC



DCF



RAEFX

Pan-Way® LD Surface Raceway System

COMPATIBLE LD RACEWAY SURFACE MOUNT OUTLET/JUNCTION BOXES

Low Voltage or Fiber Optic ONLY

JBX3510-A**

Single gang two-piece snap together outlet box with adhesive backing

Power, Low Voltage or Fiber Optic

RJBX3510**

Single gang two-piece screw together round outlet box

JBP1**

Single gang two-piece screw together outlet box

JBP1D**

Single gang two-piece screw together deep outlet box

JBP1E**

Single gang two-piece screw together extension outlet box

JBP1I**

Single gang two-piece screw together intermediate outlet box

JBP2**

Double gang two-piece screw together deep outlet box

JBP2S**

Double gang two-piece screw together divided outlet box

JBP2D**

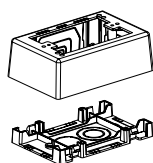
Double gang two-piece screw together deep outlet box

JBP2FS**

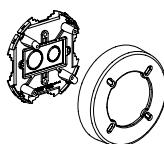
Fast-Snap™ Double Gang Power Rated Two-Piece Snap Together Outlet Box

**Colors: Off White (IW), Electrical Ivory (EI), White (WH)

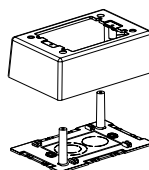
SURFACE MOUNT OUTLET/JUNCTION BOXES



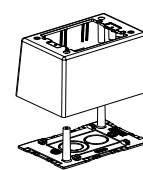
JBX3510



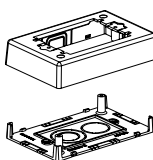
RJBX3510



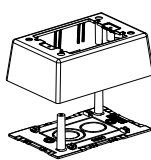
JBP1



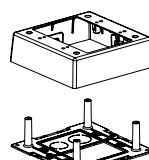
JBP1D



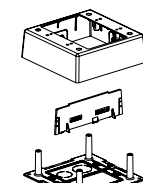
JBP1E



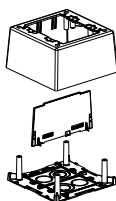
JBP1I



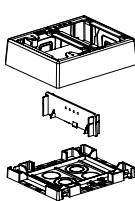
JBP2



JBP2S



JBP2D



JBP2FS

WORLDWIDE SUBSIDIARIES AND SALES OFFICES

PANDUIT US/CANADA
Phone: 800.777.3300

PANDUIT EUROPE LTD.
London, UK
Phone: 44.20.8601.7200

PANDUIT SINGAPORE PTE. LTD.
Republic of Singapore
Phone: 65.6305.7575

PANDUIT JAPAN
Tokyo, Japan
Phone: 81.3.6863.6000

PANDUIT LATIN AMERICA
Guadalajara, Mexico
Phone: 52.33.3777.6000

PANDUIT AUSTRALIA PTY. LTD.
Victoria, Australia
Phone: 61.3.9794.9020

For a copy of Panduit product warranties, log on to www.panduit.com/warranty

For more information

Visit us at www.panduit.com

Contact Customer Service by email: cs@panduit.com
or by phone: 800.777.3300

PANDUIT®

© 2024 Panduit Corp.
ALL RIGHTS RESERVED.
RKSP229-WW-ENG
5/2024