

BALDOR® • RELIANCE

Product Information Packet

EM4404T

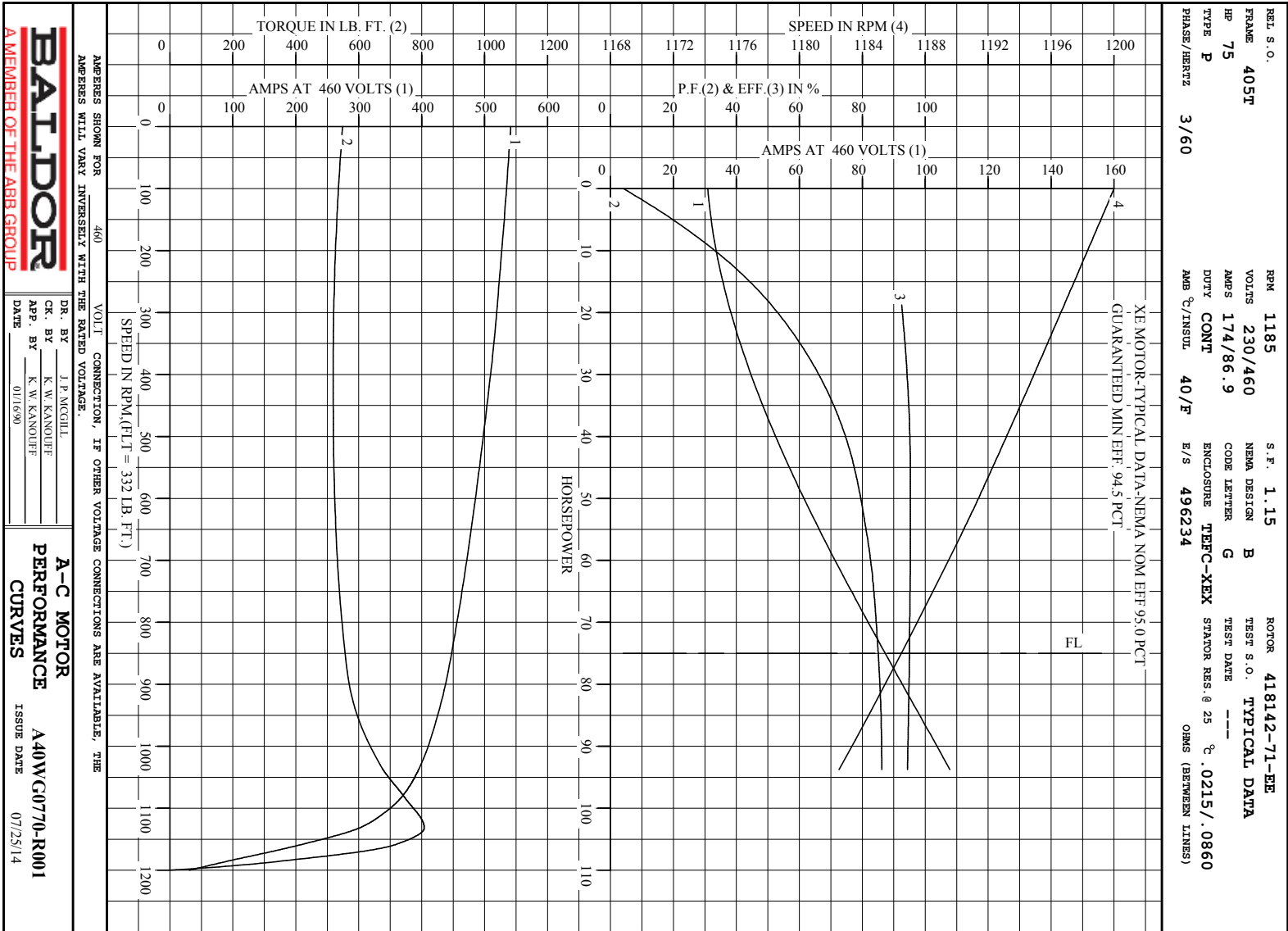
75HP, 1185RPM, 3PH, 60HZ, 405T, A4072M, TEFC, F

Part Detail							
Revision:	H	Status:	PRD/A	Change #:		Proprietary:	No
Type:	AC	Prod. Type:	A40064M	Elec. Spec:	A40WG0770	CD Diagram:	416820-002
Enclosure:	TEFC	Mfg Plant:		Mech. Spec:		Layout:	617429-001
Frame:	405T	Mounting:	F1	Poles:	06	Created Date:	07-17-2013
Base:		Rotation:	R	Insulation:	B	Eff. Date:	01-18-2017
Leads:	3#2,6#4					Replaced By:	
Literature:		Elec. Diagram:					

Nameplate NP2383L

CAT.NO.	EM4404T	SPEC NO.	P40G3931
HP	75	AMPS	174/86.9
FRAME	405T	VOLTS	230/460
DRIVE END BEARING	80BC03J30X	DESIGN	B
OPP D.E. BEARING	80BC03J30X	RPM	1185
SER.NO.		HZ	60
		AMB	40
		SF	1.15
		INSUL.CLASS	F
		PHASE	3
		DUTY	CONT
		TYPE	P
		ENCL	TEFC
		CODE	G
		POWER FACTOR	85
		NEMA-NOM-EFFICIENCY	95
		MAX CORR KVAR	15
		GUARANTEED EFFICIENCY	94.1
NEMA NOM/CSA QUOTED EFF		MOTOR WEIGHT	1300

REL. S.O.	FRAME	HP	TYPE	PHASE/ HERTZ	RPM	VOLTS
	405T	75	P	3/60	1185	230/460
AMPS	DUTY	AMB ^{°C} / INSUL.	S.F.	NEMA DESIGN	CODE LETTER	ENCL.
174/86.9	CONT	40/F	1.15	B	G	TEFC-XEX
E/S	ROTOR	TEST S.O.	TEST DATE	STATOR RES. @25 ^{°C} OHMS (BETWEEN LINES)		
496234	418142-71-EE	---	---	.0215/.0860		
PERFORMANCE						
LOAD	HP	AMPERES	RPM	POWER FACTOR	% EFFICIENCY	
NO LOAD	0	31.0	1200	4.11	0	
1/4	18.8	37.2	1197	51.1	92.5	
2/4	37.5	50.7	1194	73.0	95.0	
3/4	56.2	67.7	1190	81.6	95.3	
4/4	75.0	86.9	1187	85.1	95.0	
5/4	93.8	108	1183	86.2	94.4	
SPEED TORQUE						
	RPM	TORQUE % FULL LOAD	TORQUE LB.-FT.	AMPERES		
LOCKED ROTOR	0	165	549	541		
PULL UP	400	156	519	509		
BREAKDOWN	1132	243	808	302		
FULL LOAD	1187	100	332	86.9		
AMPERES SHOWN FOR 460. VOLT CONNECTION. IF OTHER VOLTAGE CONNECTIONS ARE AVAILABLE, THE AMPERES WILL VARY INVERSELY WITH THE RATED VOLTAGE REMARKS: TYPICAL DATA XE MOTOR-TYPICAL DATA-NEMA NOM EFF 95.0 PCT GUARANTEED MIN EFF. 94.5 PCT						
<div> <div> BALDOR A MEMBER OF THE ABB GROUP </div> <div> DR. BY <u>J. P. MCGILL</u> CK. BY <u>K. W. KNOUF</u> APP. BY <u>K. W. KNOUF</u> DATE <u>01/16/90</u> </div> <div> A-C MOTOR PERFORMANCE DATA A40WG0770-R001 ISSUE DATE 07/25/14 </div> </div>						



DUTY MASTER ALTERNATING CURRENT MOTORS

SQUIRREL-CAGE INDUCTION

ENCLOSURE: TOTALLY ENCLOSED

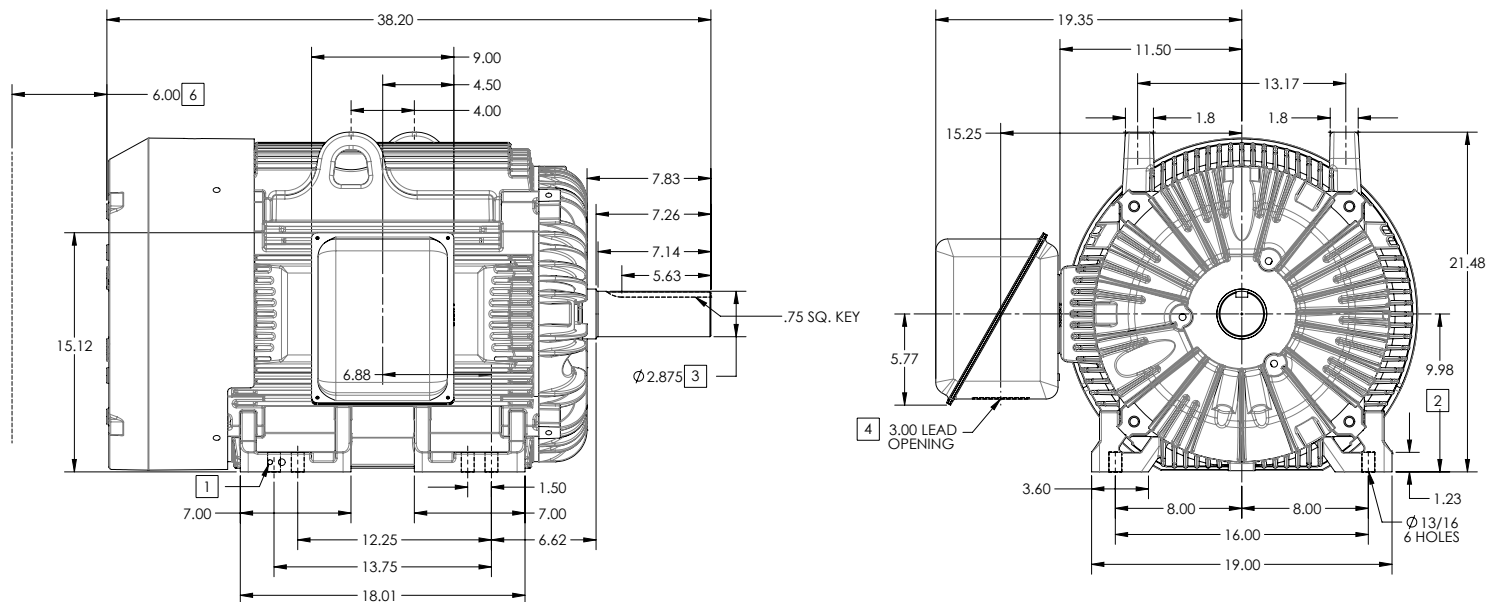
FRAME G405T ABOVE NEMA RATINGS

COOLING: FAN COOLED

MOUNTING: FOOT

INCLUDES 404T FRAME MOUNTING HOLES

STANDARD INDUSTRIAL ENCLOSURE



1. GROUND HOLES QTY 1 1/2-13 TAP; QTY 1 3/8-16 TAP
2. VARIES +.00,-.06
3. VARIES +.00,-.001
4. ON STANDARD MOTORS THIS IS CONDUIT SIZE. ON XT AND CORROSION PROOF MOTOR THIS IS PIPE TAP.
5. MOTOR WEIGHTS MAY VARY BY 15% DEPENDING ON RATING.
6. OBSTRUCTION MUST NOT ENCROACH ON AIR INLET

CONDUIT BOX LOCATED ON OPPOSITE SIDE WHEN F-2.
IF MOUNTING CLEARANCE DETAILS ARE REQUIRED, CONSULT FACTORY.
MAXIMUM PERMISSIBLE SHAFT RUNOUT WHEN MEASURED AT END OF
STANDARD SHAFT EXTENSION IS .003" T.I.R. TO 5 INCH DIA.

[5] WEIGHT (LBS): 1350

DIMENSIONS ARE IN INCHES; SEE SHEET 2 FOR DIMENSIONS IN MILLIMETERS

CUSTOMER IS RESPONSIBLE FOR DETERMINING THAT MOTOR PERFORMANCE IS SUITABLE IN THE APPLICATION.

SHEET NUMBER
1 OF 2

100-672119

REV. DESC: CHANGE BA FROM 6.76 TO 6.62	TDR: 000000848770
REV: B VERSION: 02	REVISED: 11-30-02 04/14/2014
MODEL NO. 617429-001	REF:
BY: MGH/MZ2	Material:

BALDOR

G405T404T STD - FOOTED - STANDARD ENCLOSURE

DUTY MASTER ALTERNATING CURRENT MOTORS

SQUIRREL-CAGE INDUCTION

ENCLOSURE: TOTALLY ENCLOSED

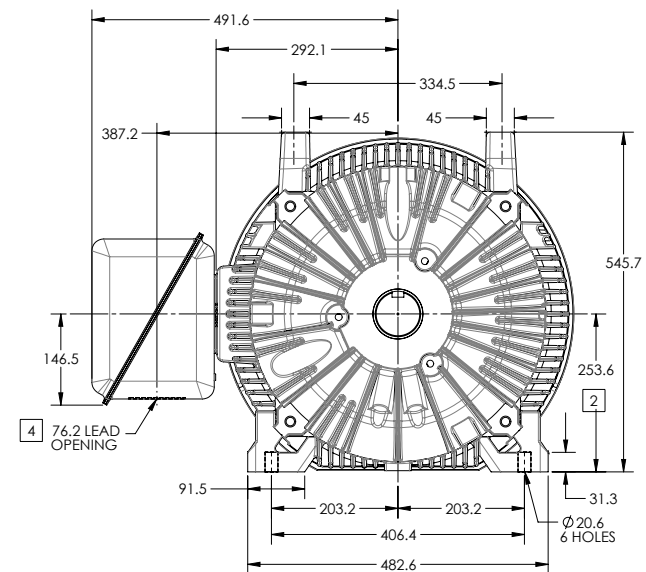
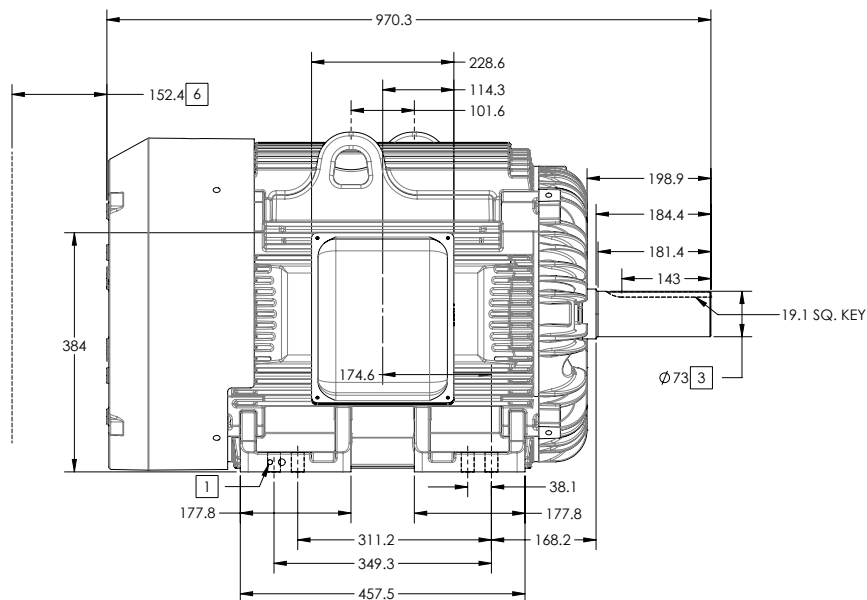
FRAME G405T ABOVE NEMA RATINGS

COOLING: FAN COOLED

MOUNTING: FOOT

INCLUDES 404T FRAME MOUNTING HOLES

STANDARD INDUSTRIAL ENCLOSURE



1. GROUND HOLES QTY 1 1/2-13 TAP; QTY 1 3/8-16 TAP
2. VARIES +0,-1.5
3. VARIES +.00,-.03
4. ON STANDARD MOTORS THIS IS CONDUIT SIZE. ON XT AND CORROSION PROOF MOTOR THIS IS PIPE TAP.
5. MOTOR WEIGHTS MAY VARY BY 15% DEPENDING ON RATING.
6. OBSTRUCTION MUST NOT ENCR OACH ON AIR INLET

CONDUIT BOX LOCATED ON OPPOSITE SIDE WHEN F-2.
IF MOUNTING CLEARANCE DETAILS ARE REQUIRED, CONSULT FACTORY.
MAXIMUM PERMISSIBLE SHAFT RUNOUT WHEN MEASURED AT END OF
STANDARD SHAFT EXTENSION IS .08 MM T.I.R. TO 127 MM DIA.

5 WEIGHT (KGS): 620

DIMENSIONS ARE IN MILLIMETERS; SEE SHEET 1 FOR DIMENSIONS IN INCHES

CUSTOMER IS RESPONSIBLE FOR DETERMINING THAT MOTOR PERFORMANCE IS SUITABLE IN THE APPLICATION.

 SHEET NUMBER
2 OF 2

100-672119

REV. DESC: CHANGE BA FROM 6.76 TO 6.62			
REV: B	VERSION: 02	REVISED: 11-30-02 04/14/2014	TDR: 000000848770
MODEL NO. 617429-001		REF:	
BY: MGHJMM2	Material:		

BALDOR

G405T404T STD - FOOTED - STANDARD ENCLOSURE

