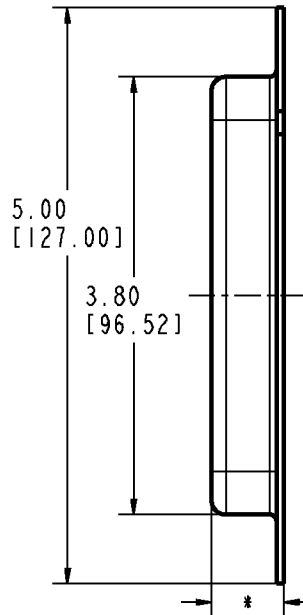
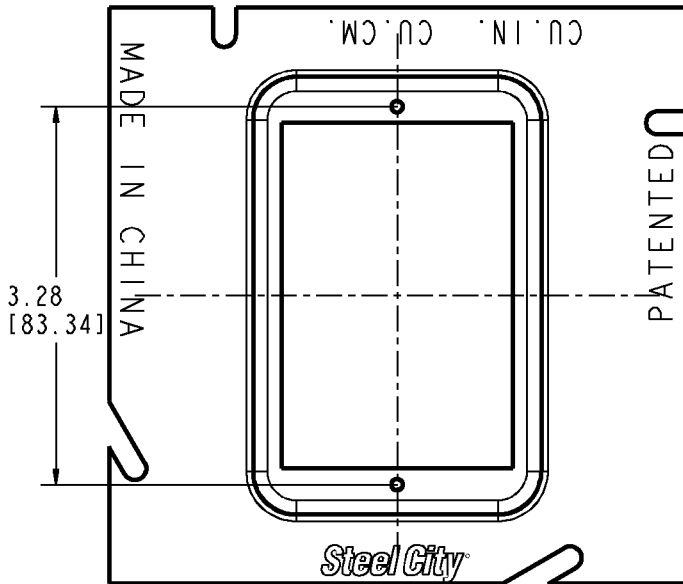
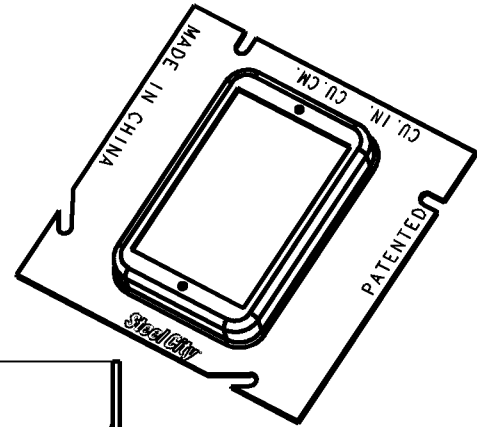
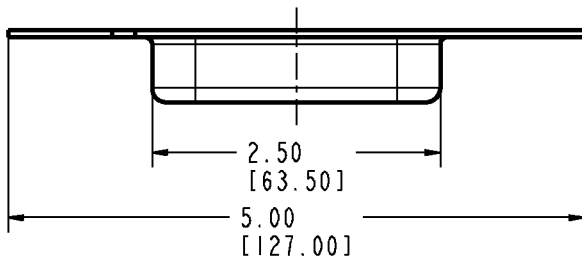
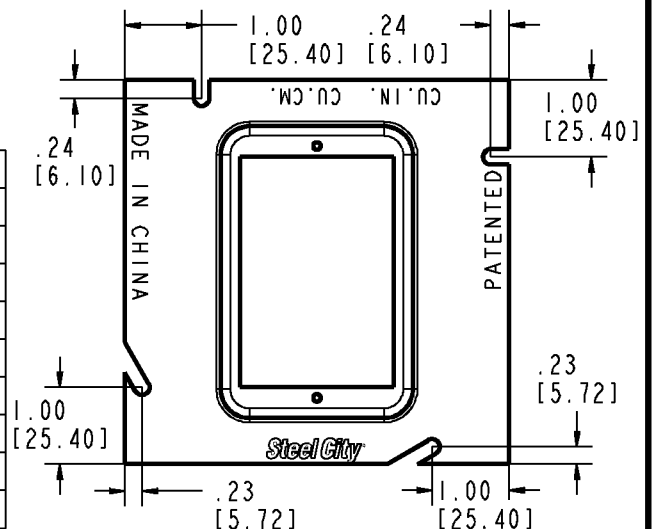




Steel City



- NOTES:
 1. METAL MINIMUM THICKNESS .063".
 2. ZINC PLATED



* FLAT	VOLUME	CATALOG NO
1/4	1.5 IN ³ [25 CM ³]	82C-1G-0
1/2	3.5 IN ³ [57 CM ³]	82C-1G-1/2
5/8	4.3 IN ³ [71 CM ³]	82C-1G-5/8
3/4	5.3 IN ³ [87 CM ³]	82C-1G-3/4
1	6.8 IN ³ [112 CM ³]	82C-1G-1
1-1/4	8.5 IN ³ [140 CM ³]	82C-1G-1-1/4
1-1/2	10.5 IN ³ [172 CM ³]	82C-1G-1-1/2
2	14 IN ³ [230 CM ³]	82C-1G-2

GENERAL NOTES

- ALL DIMENSIONS ARE FOR REFERENCE ONLY.
- DIMENSIONS IN BRACKETS [] ARE IN METRIC UNITS.

REVISIONS

- SEE ERN (****) FOR APPROVAL SIGNATURES & RELEASE DATE.
- PROJECT NO: ****

www.tnb.com

DESCRIPTION:

5" SQUARE X SINGLE GANG EXTENSION RING

ORIGINAL PROJECT NO / (ERN NO)

00P000414 / (2014664)

SHEET NO:

1 OF 1

REV. NO:

-

DRAWING NO:

WSD-001190

Thomas & Betts
 A Member of the ABB Group