

BALDOR® • RELIANCE

Product Information Packet

L1410T

5HP,1725RPM,1PH,60HZ,184T,3640LC,OPEN,F1

Part Detail							
Revision:	F	Status:	PRD/A	Change #:		Proprietary:	No
Type:	AC	Prod. Type:	3640LC	Elec. Spec:	36WGW849	CD Diagram:	CD0017A02
Enclosure:	OPEN	Mfg Plant:		Mech. Spec:	36M925	Layout:	36LYM925
Frame:	184T	Mounting:	F1	Poles:	04	Created Date:	01-06-2010
Base:	RG	Rotation:	R	Insulation:	F	Eff. Date:	09-10-2015
Leads:	2#10 A PH,2#16 B PH					Replaced By:	
Literature:		Elec. Diagram:					

Nameplate NP1256L										
CAT.NO.	L1410T									
SPEC.	36M925W849G1									
HP	5									
VOLTS	230									
AMP	23									
RPM	1725									
FRAME	184T				HZ	60			PH	1
SER.F.	1.15		CODE	G	DES	L		CLASS	F	
NEMA-NOM-EFF	82.5		PF	87						
RATING	40C AMB-CONT									
CC								USABLE AT 208V	25	
DE	6206				ODE	6205				
ENCL	OPEN		SN							

AC Induction Motor Performance Data

Record # 20861 - Typical performance - not guaranteed values

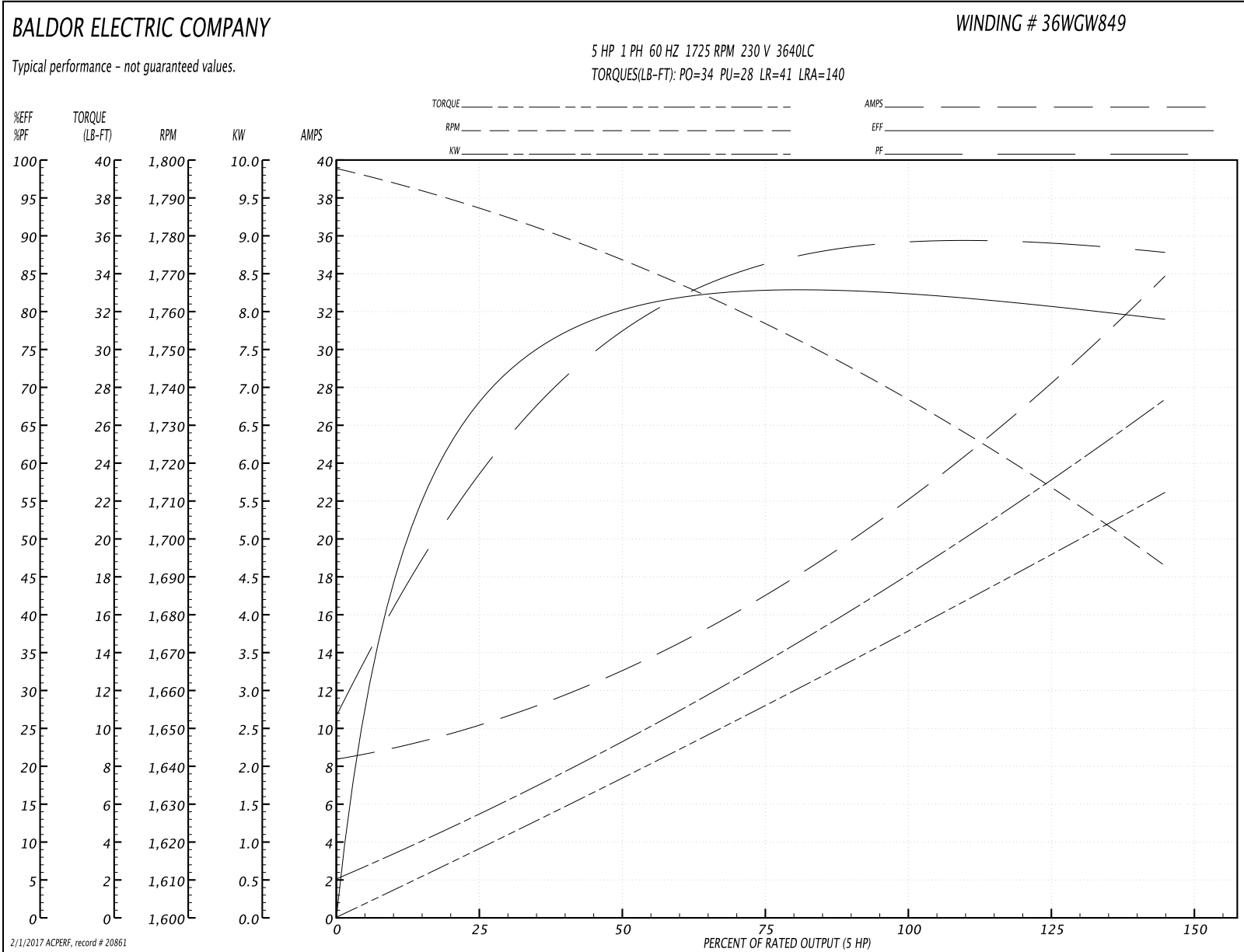
Winding: 36WGW849-R001	Type: 3640LC	Enclosure: OPEN
-------------------------------	---------------------	------------------------

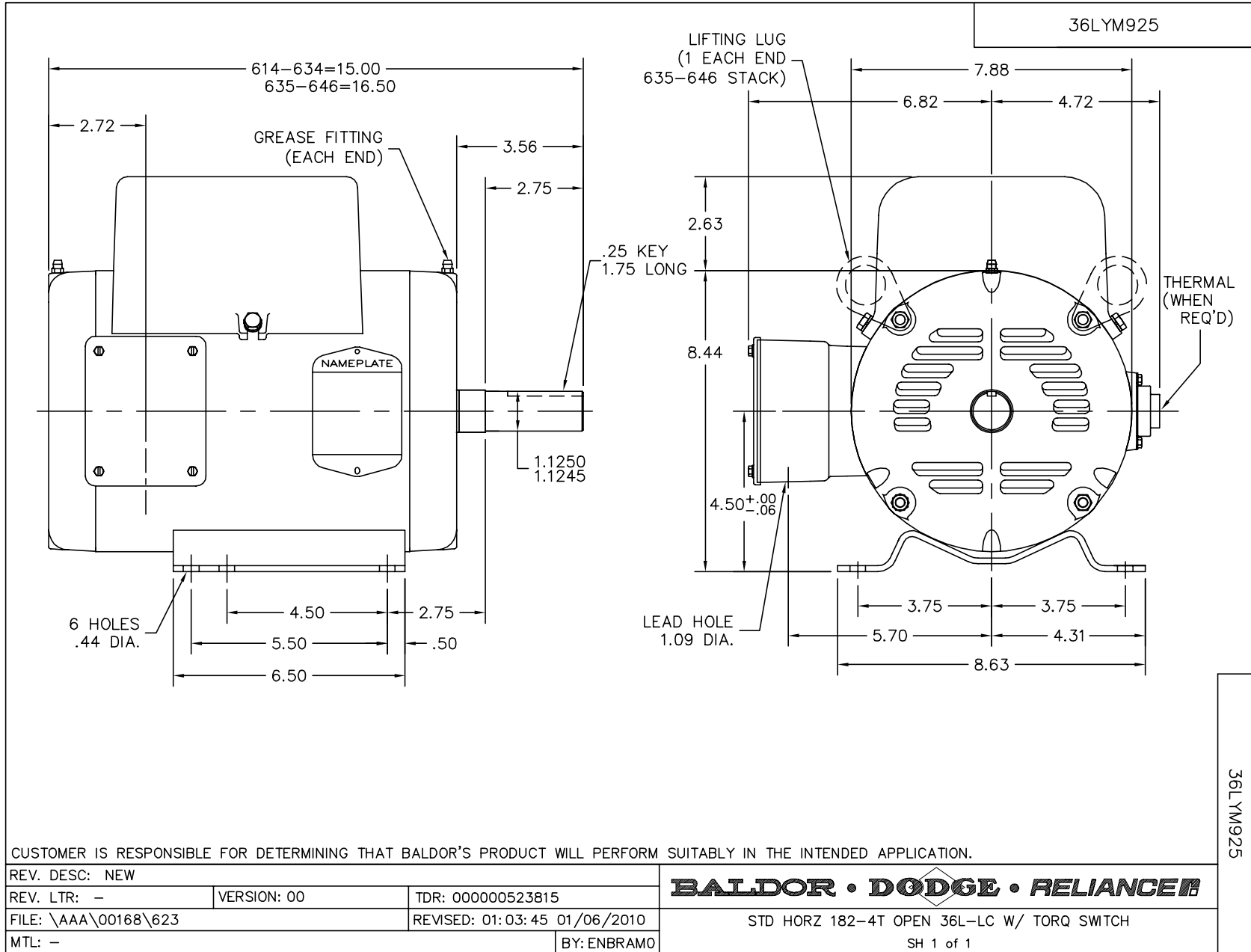
Nameplate Data				230 V, 60 Hz: Single Voltage Motor	
Rated Output (HP)	5			Full Load Torque	15 LB-FT
Volts	230			Start Configuration	direct on line
Full Load Amps	23			Breakdown Torque	34 LB-FT
R.P.M.	1725			Pull-up Torque	28 LB-FT
Hz	60	Phase	1	Locked-rotor Torque	41 LB-FT
NEMA Design Code	L	KVA Code	G	Starting Current	140 A
Service Factor (S.F.)	1.15			No-load Current	8.4 A
NEMA Nom. Eff.	82.5	Power Factor	87	Line-line Res. @ 25°C	0.45 Ω A Ph 1.56 Ω B Ph
Rating - Duty	40C AMB-CONT			Temp. Rise @ Rated Load	90°C
S.F. Amps				Temp. Rise @ S.F. Load	110°C

Load Characteristics 230 V, 60 Hz, 5 HP

% of Rated Load	25	50	75	100	125	150	S.F.
Power Factor	60	78	86	89	91	91	90
Efficiency	67.2	79.2	82.7	83	81.5	78.5	82.1
Speed	1786	1772	1756	1739	1718	1691	1726
Line amperes	10.1	13.2	17.2	21.9	27.4	34	25.2

Performance Graph at 230V, 60Hz, 5.0HP Typical performance - Not guaranteed values





CUSTOMER IS RESPONSIBLE FOR DETERMINING THAT BALDOR'S PRODUCT WILL PERFORM SUITABLY IN THE INTENDED APPLICATION.

REV. DESC: NEW		
REV. LTR: -	VERSION: 00	TDR: 000000523815
FILE: \AAA\00168\623		REVISED: 01:03:45 01/06/2010
MTL: -		BY: ENBRAMO

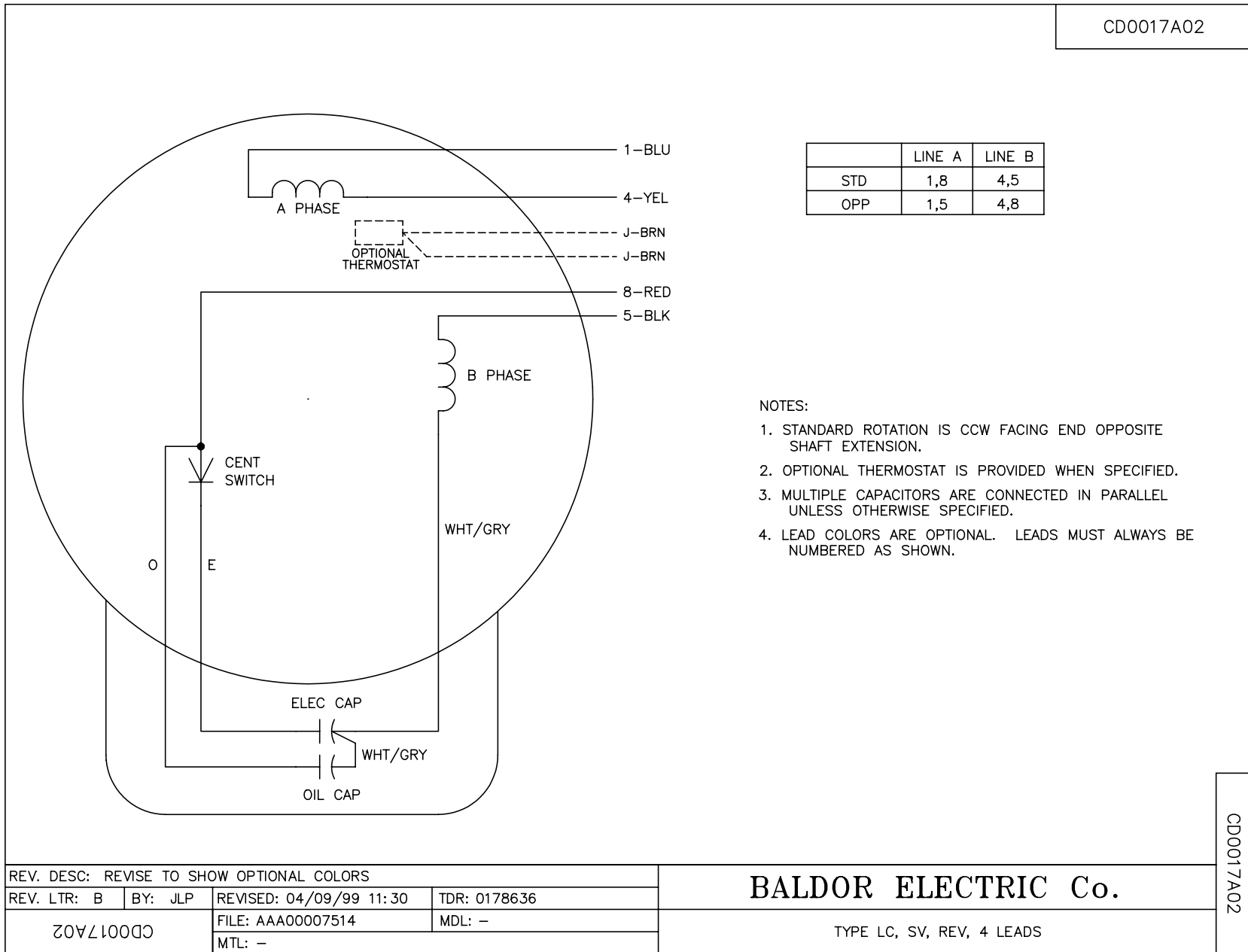
BALDOR • DODGE • RELIANCE

STD HORZ 182-4T OPEN 36L-LC W/ TORQ SWITCH

SH 1 of 1

36L YM925

CD0017A02



CD0017A02

REV. DESC: REVISE TO SHOW OPTIONAL COLORS			
REV. LTR: B	BY: JLP	REVISED: 04/09/99 11:30	TDR: 0178636
CD0017A02		FILE: AAA00007514	MDL: -
		MTL: -	

BALDOR ELECTRIC Co.

TYPE LC, SV, REV, 4 LEADS