

BALDOR® • RELIANCE

Product Information Packet

AOM3708T

5 AIR OVERHP, 1150RPM, 3PH, 60HZ, 215T, 3732M

Part Detail							
Revision:	C	Status:	PRD/A	Change #:		Proprietary:	No
Type:	AC	Prod. Type:	3732M	Elec. Spec:	37WGS070	CD Diagram:	CD0005
Enclosure:	TEAO	Mfg Plant:		Mech. Spec:	37F359	Layout:	37LYF359
Frame:	215T	Mounting:	F1	Poles:	06	Created Date:	11-30-2010
Base:	RG	Rotation:	R	Insulation:	F	Eff. Date:	08-05-2016
Leads:	9#14 36" LG Y					Replaced By:	
Literature:		Elec. Diagram:					

Nameplate NP1256L										
CAT.NO.	AOM3708T									
SPEC.	37F359S070G1									
HP	5 AIR OVER									
VOLTS	208-230/460									
AMP	16.5-15.2/7.6									
RPM	1150									
FRAME	215T				HZ	60			PH	3
SER.F.	1.00		CODE	J	DES	B		CLASS	F	
NEMA-NOM-EFF	86.5		PF	71						
RATING	40C AMB-CONT									
CC									USABLE AT 208V	
DE	6307				ODE	6206				
ENCL	TEAO		SN							
	1275 FPM AT 170CFM									

AC Induction Motor Performance Data

Record # 37121 - Typical performance - not guaranteed values

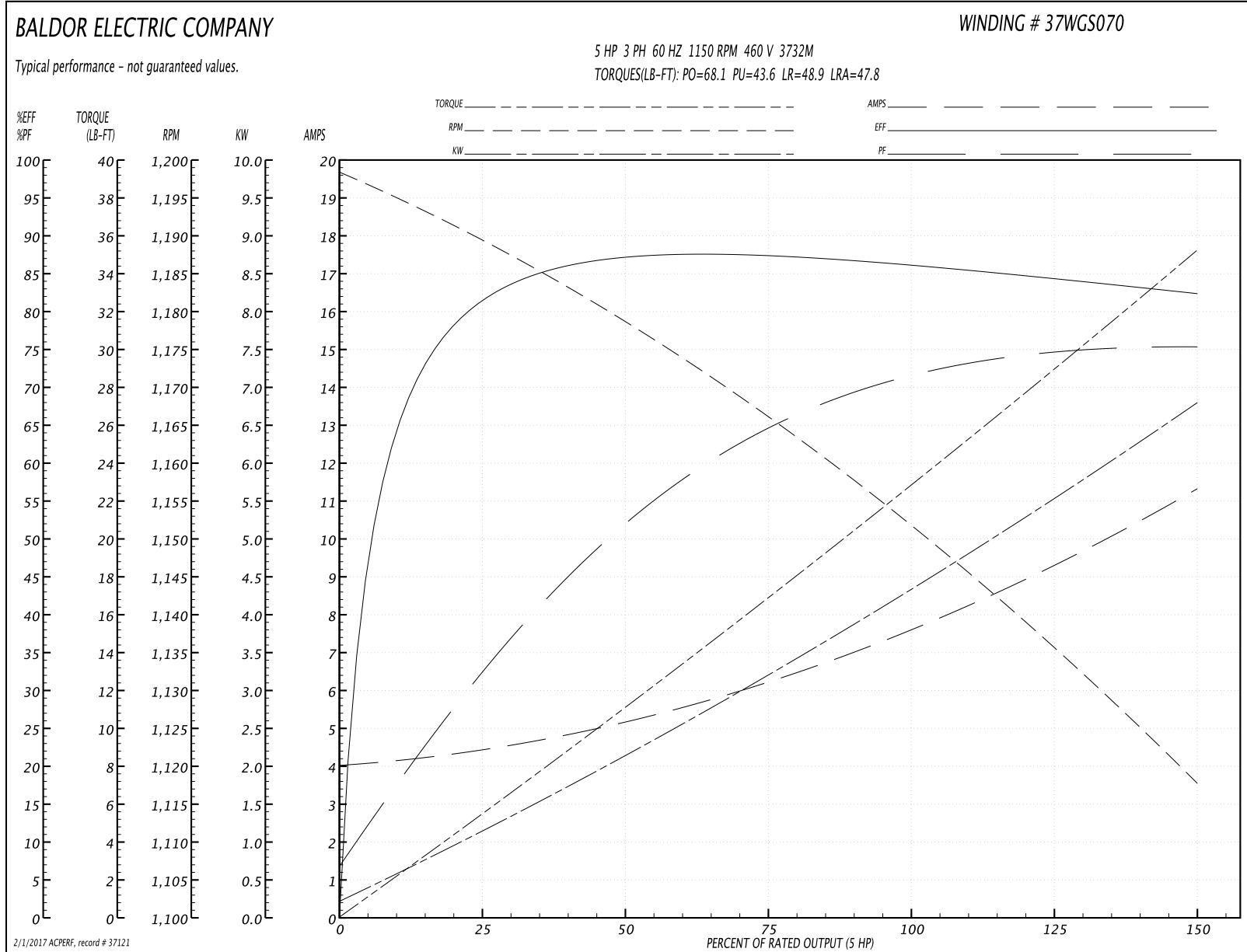
Winding: 37WGS070-R007	Type: 3732M	Enclosure: TEAO
-------------------------------	--------------------	------------------------

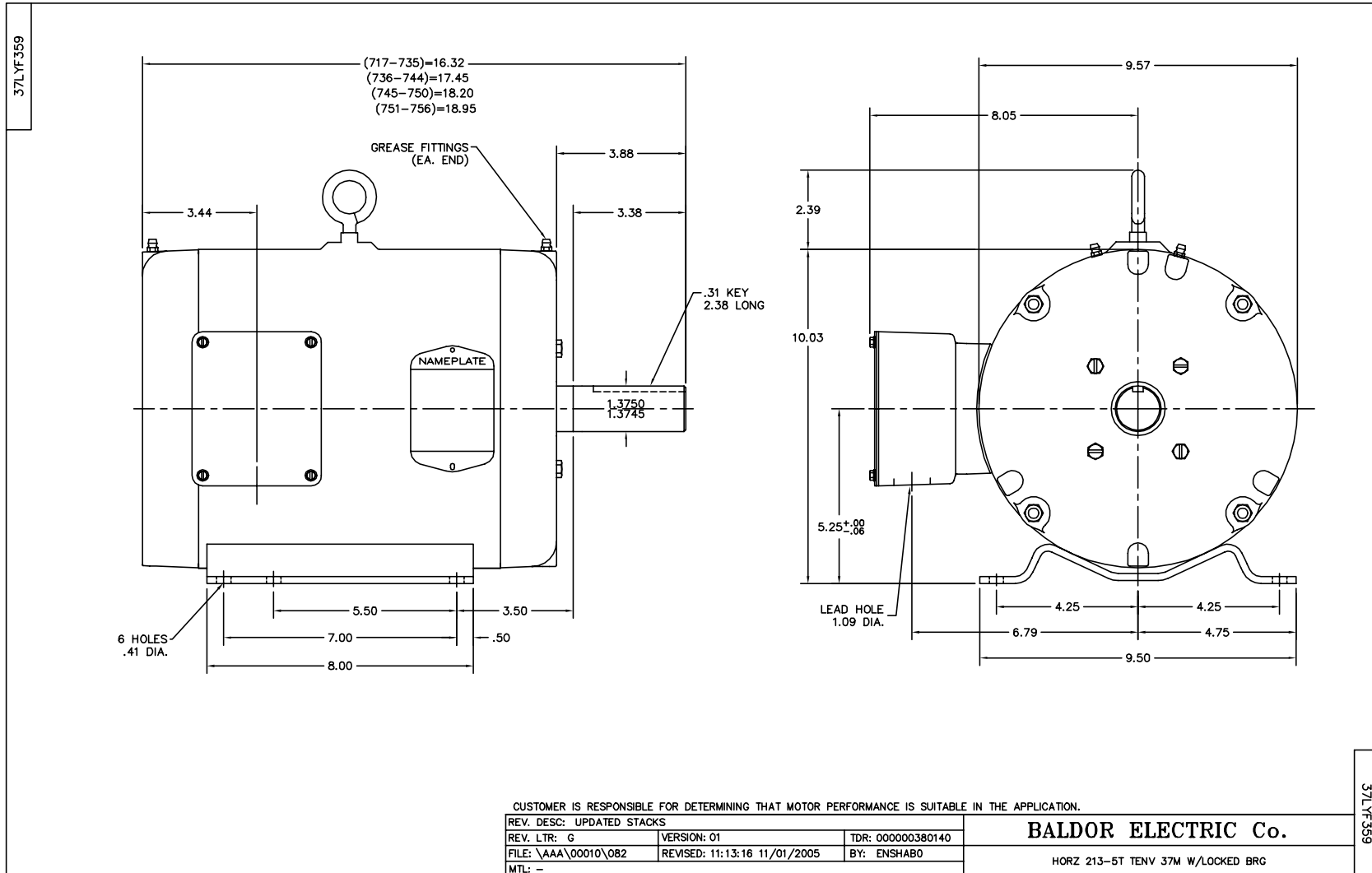
Nameplate Data				460 V, 60 Hz: High Voltage Connection	
Rated Output (HP)	5 AIR OVER			Full Load Torque	22.6 LB-FT
Volts	208-230/460			Start Configuration	direct on line
Full Load Amps	16.5-15.2/7.6			Breakdown Torque	68.1 LB-FT
R.P.M.	1150			Pull-up Torque	43.6 LB-FT
Hz	60	Phase	3	Locked-rotor Torque	48.9 LB-FT
NEMA Design Code	B	KVA Code	J	Starting Current	47.8 A
Service Factor (S.F.)	1			No-load Current	4.09 A
NEMA Nom. Eff.	86.5	Power Factor	71	Line-line Res. @ 25°C	2.03 Ω
Rating - Duty	40C AMB-CONT			Temp. Rise @ Rated Load	79°C
				Locked-rotor Power Factor	24
				Rotor inertia	0.796 LB-FT ²

Load Characteristics 460 V, 60 Hz, 5 HP

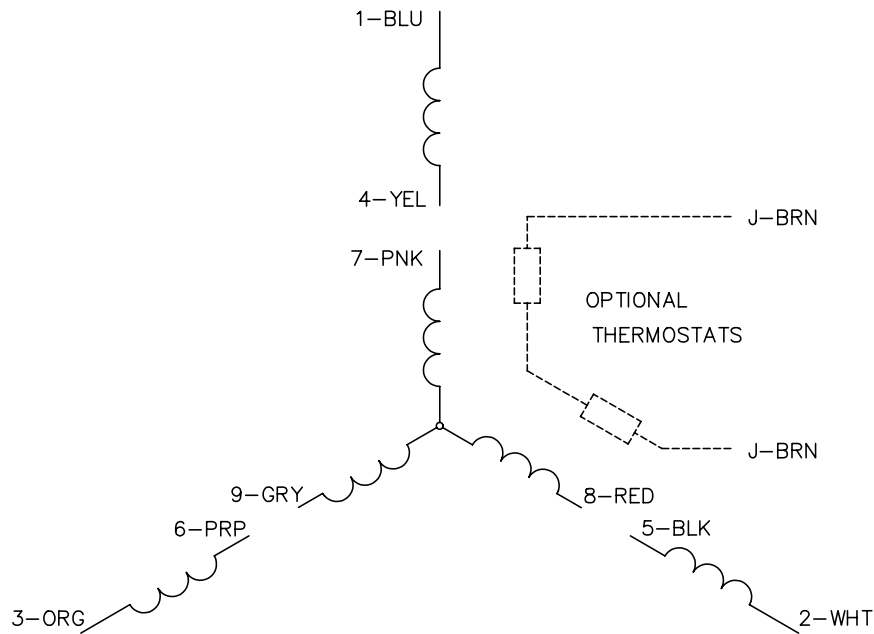
% of Rated Load	25	50	75	100	125	150
Power Factor	33	53	64	71	74	76
Efficiency	79.7	86.7	87.3	86.7	84.6	82.2
Speed	1189	1178	1166	1153	1136	1117
Line amperes	4.33	5.15	6.24	7.6	9.36	11.3

Performance Graph at 460V, 60Hz, 5.0HP Typical performance - Not guaranteed values

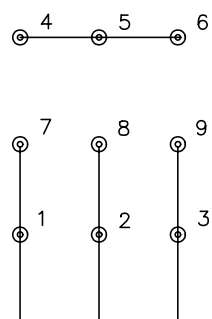




CD0005

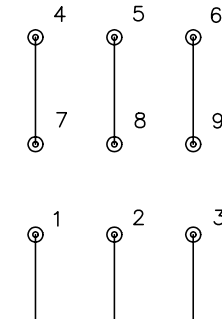


LOW VOLTAGE
(2Y)



LINE

HIGH VOLTAGE
(1Y)



LINE

NOTES:

1. INTERCHANGE ANY TWO LINE LEADS TO REVERSE ROTATION.
2. OPTIONAL THERMOSTATS ARE PROVIDED WHEN SPECIFIED.
3. ACTUAL NUMBER OF INTERNAL PARALLEL CIRCUITS MAY BE A MULTIPLE OF THOSE SHOWN ABOVE.
4. LEAD COLORS ARE OPTIONAL. LEADS MUST ALWAYS BE NUMBERED AS SHOWN.

REV. DESC: REVISE TO SHOW OPTIONAL COLORS			
REV. LTR: E	BY: JLP	REVISED: 01/19/99 10:15	TDR: 0171435
9000D		FILE: AAA00005140	MDL: -
		MTL: -	

BALDOR ELECTRIC Co.

3PH, DV, 9 LEADS

CD0005