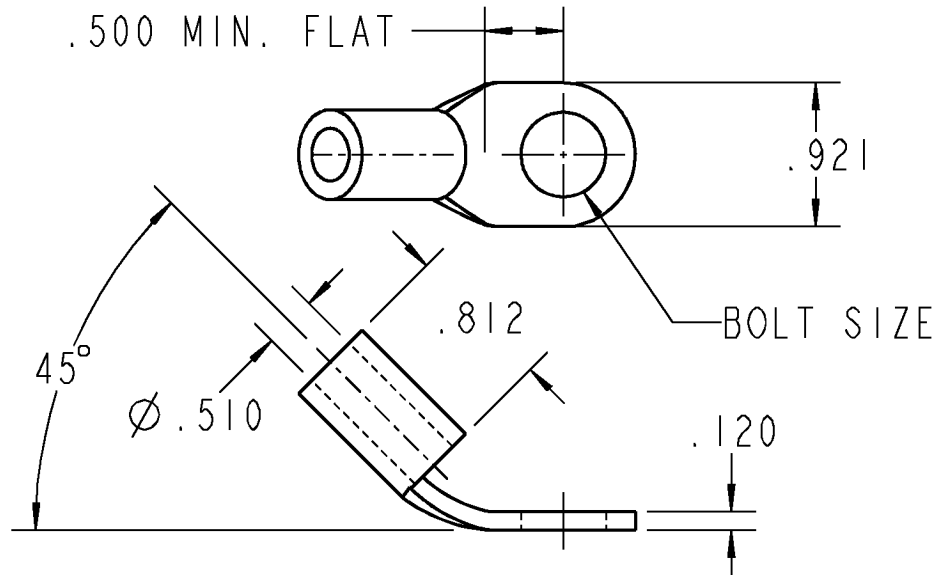


Sta-Kon®



DIMENSIONS FOR REFERENCE ONLY

CAT. No.	WIRE SIZE	BOLT SIZE
K971UF	2/0 AN 3/0 CODE 150 NAVY	1/4
K972UF		5/16
K973UF		3/8
K974UF		7/16
K975UF		1/2

CATALOG Nos. MAY HAVE -NP OR -SP SUFFIXES, SEE FINISH TYPE BELOW.

MATERIAL:
COPPER TUBING

FINISH:
STANDARD - ELECTRO TIN PLATED
NP SUFFIX: NICKEL PLATED
SP SUFFIX: SILVER PLATED

TOOLS:
TBM6, TBM6S, 25000 - DIES 11809 / 11802
13642M, 13400 - DIES: 11787M (HEX), 11739 (HEX), 13657/13650

GENERAL NOTES

- ALL DIMENSIONS ARE FOR REFERENCE ONLY.
- DIMENSIONS IN BRACKETS [] ARE IN METRIC UNITS.

REVISIONS

SEE ERN (****)
FOR APPROVAL SIGNATURES
& RELEASE DATE.
PROJECT NO: ****

Thomas & Betts
www.tnb.com

DESCRIPTION:

**K SERIES STA-KON
RING TERMINAL, 45° BEND**

ORIGINAL PROJECT NO / (ERN NO)

TM401347 / (2010451)

SHEET NO:

1 OF 1

REV. NO:

DRAWING NO:

WSD-000488