

BALDOR® • **RELIANCE**

Product Information Packet

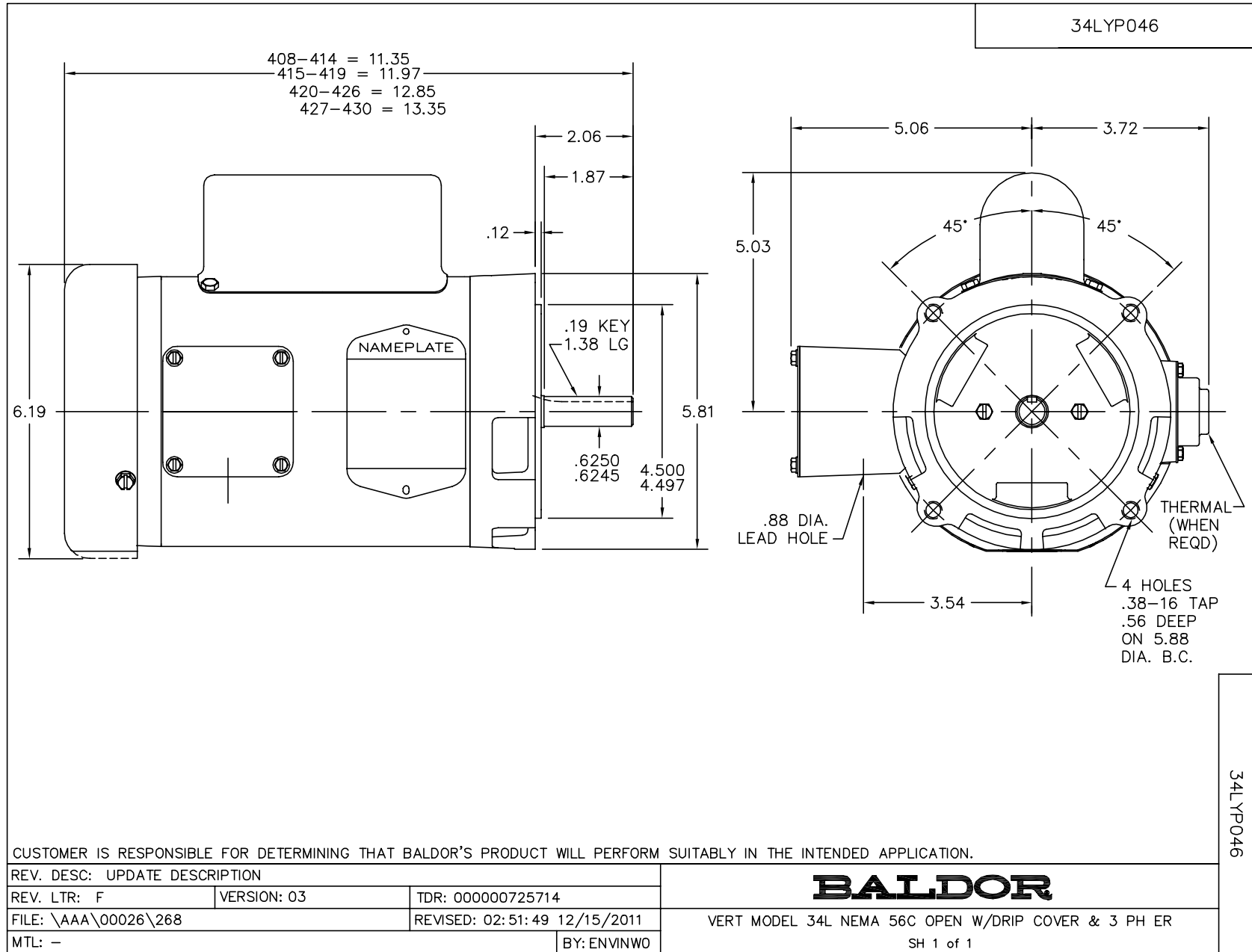
VL1306

.75HP,3450RPM,1PH,60HZ,56C,3420L,OPEN,F1

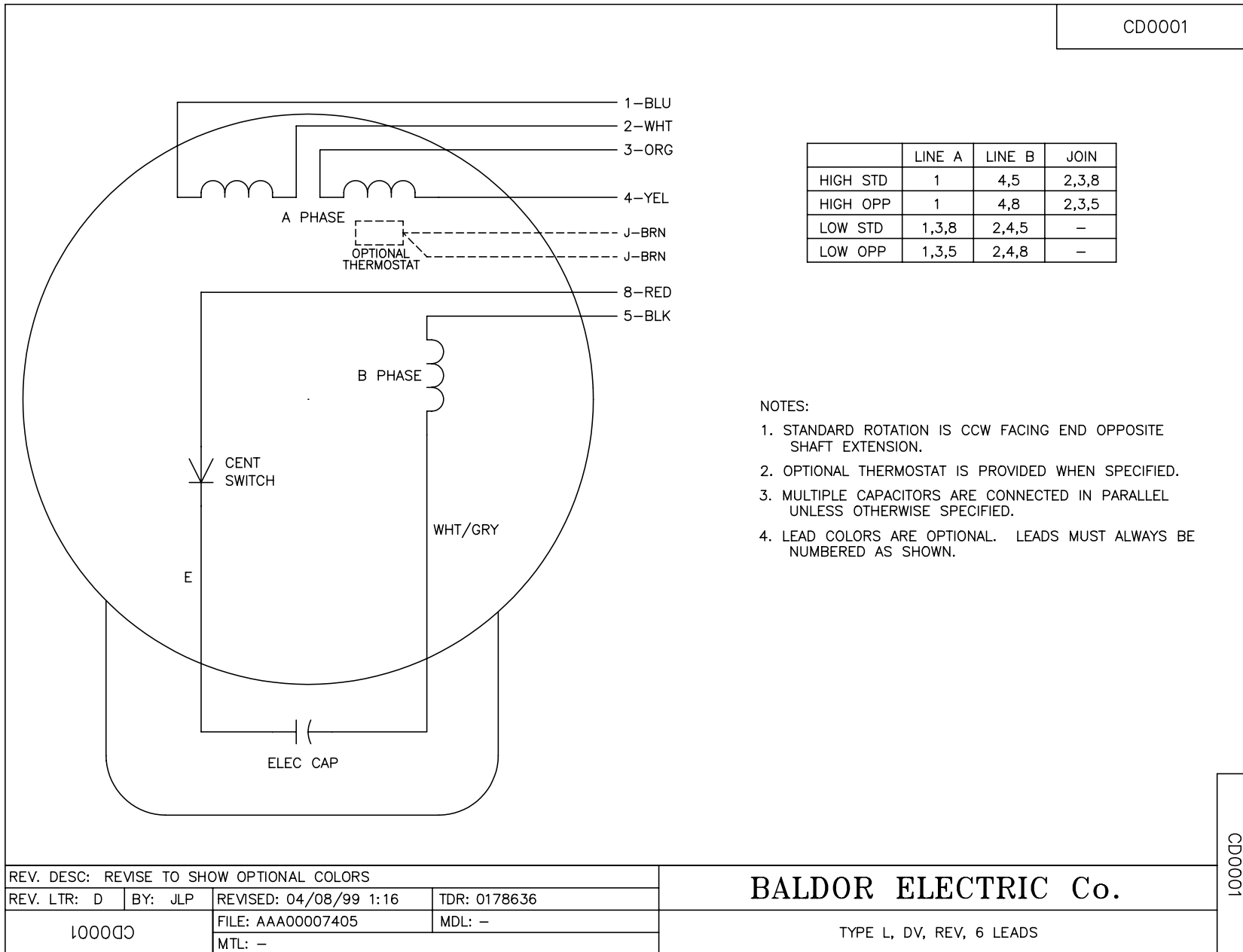
Part Detail							
Revision:	S	Status:	INA/A	Change #:		Proprietary:	No
Type:	AC	Prod. Type:	3420L	Elec. Spec:	34WG5897	CD Diagram:	CD0001
Enclosure:	OPEN	Mfg Plant:		Mech. Spec:	34P046	Layout:	34LYP046
Frame:	56C	Mounting:	F1	Poles:	02	Created Date:	
Base:	N	Rotation:	R	Insulation:	B	Eff. Date:	01-21-2015
Leads:	6#18					Replaced By:	NO REPLACEMENT
Literature:		Elec. Diagram:					

Nameplate NP1256L										
CAT.NO.	VL1306									
SPEC.	34P46-5897									
HP	.75									
VOLTS	115/230									
AMP	9.4/4.7									
RPM	3450									
FRAME	56C				HZ	60			PH	1
SER.F.	1.25		CODE	J	DES	N		CLASS	B	
NEMA-NOM-EFF	72		PF	71						
RATING	40C AMB-CONT									
CC								USABLE AT 208V	5.8	
DE	6203				ODE	6203				
ENCL	OPEN		SN							
	SFA 11/5.5									

No performance data has been
assigned to this product.



CD0001



REV. DESC: REVISE TO SHOW OPTIONAL COLORS			
REV. LTR: D	BY: JLP	REVISED: 04/08/99 1:16	TDR: 0178636
100000		FILE: AAA00007405	MDL: -
		MTL: -	

BALDOR ELECTRIC Co.

TYPE L, DV, REV, 6 LEADS

CD0001