



FlexFit (Hybrid UL Type A + B) PLC/T

16PL-C/T/COR/42HV-5CCT/FF18/4P/10/1

Philips FlexFit (Hybrid UL Type A + B) lamps are designed with the customer in mind for installation flexibility. The FlexFit lamp can operate as both a plug and play (UL Type-A) and direct wire (UL Type-B). As with all Philips products, the FlexFit family of lamps are compatible with more ballasts than any manufacturer giving the customer peace of mind during installation. Additionally, the long life (50K hours) delivers reduced maintenance and replacement costs. Available as replacements for 32W and 42w compact fluorescent lamps

Product data

General Information	
Cap-Base	G24q
Nominal lifetime	50,000 hour(s)
Switching Cycle	50,000
Lighting Technology	LED
Light Technical	
Color Code	2700/3000/3500/4000/5000
Beam Angle (Nom)	120 degree(s)
Luminous Flux	1,750 1,750 1,750 1,850 1,850 lm
Color Designation	2700/3000/3500/4000/5000
Luminous Efficacy (rated) (Nom)	115 lm/W
Correlated Color Temperature (Nom)	2700 3000 3500 4000 5000 K
Color Consistency	<6
Color rendering index (CRI)	82
LLMF At End Of Nominal Lifetime (Nom)	70 %

Operating and Electrical	
Input Frequency	50 to 60 Hz
Power Consumption	16 W
Lamp Current (Nom)	166 mA
Wattage Equivalent	42 W
Starting Time (Nom)	0.5 s
Warm-up time to 60% light	0.5 s
Power Factor (Fraction)	0.9
Voltage (Nom)	120-277 V
UL Type	UL Type A+B
Temperature	
Ambient temperature range	-4 to +113 °F
T-Case Maximum (Nom)	185 °F
Controls and Dimming	
Dimmable	Only with specific dimmers

FlexFit (Hybrid UL Type A + B) PLC/T

Mechanical and Housing

Bulb Finish	Frosted
Bulb Material	Plastic
Product Length	3-15/16 inch
Bulb Shape	PL-C

Approval and Application

Energy Saving Product	Yes
Approval Marks	RoHS compliance UL certificate DLC compliance
EU RoHS compliant	Yes

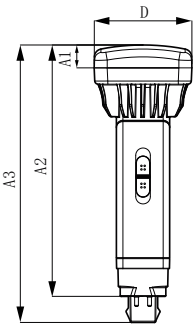
Application Conditions

can it be used in closed luminaires	Yes
-------------------------------------	-----

Product Data

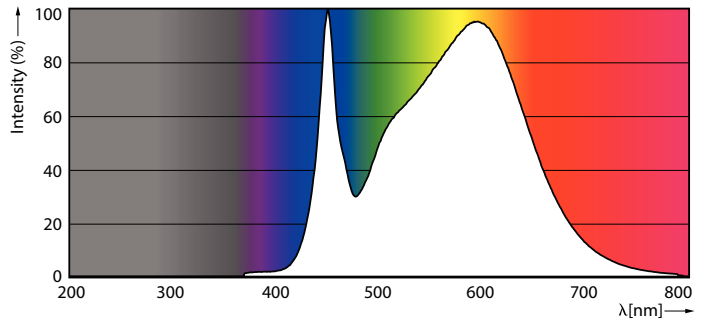
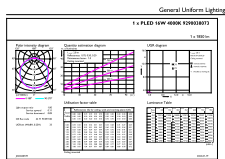
Order product name	16PL-C/T/COR/42HV-5CCT/FF18/4P/10/1
Full product name	16PL-C/T/COR/42HV-5CCT/FF18/4P/10/1
Order code	589788
Material Nr. (12NC)	929003807304
Numerator - Quantity Per Pack	1
Net Weight (Piece)	0.419 lb
EAN/UPC - Product/Case	046677589783
Numerator - Packs per outer box	10
EAN/UPC - Case	50046677589788

Dimensional drawing



Product	D1	D	A1	A2	A3
16PL-C/T/COR/42HV-5CCT/FF18/4P/10/1	2-3/8 inch	2-3/8 inch	9/16 inch	6-1/8 inch	6-3/4 inch

Photometric data

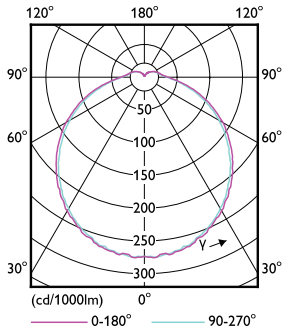


General uniform lighting - 16PL-C/T/COR/42HV-5CCT/FF18/4P/10/1

Spectral Power Distribution Colour - 16PL-C/T/COR/42HV-5CCT/FF18/4P/10/1

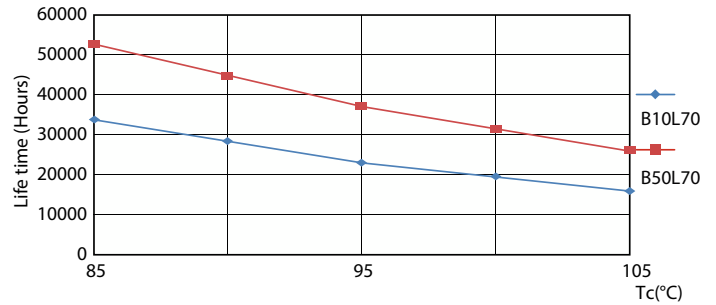
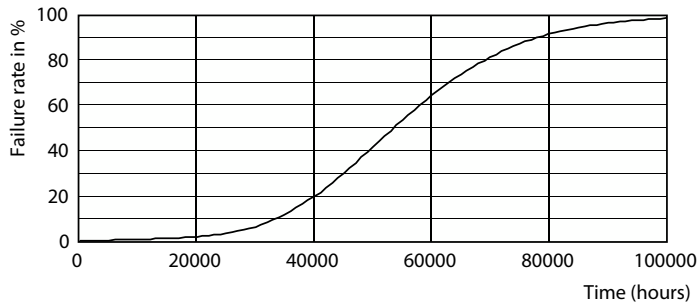
FlexFit (Hybrid UL Type A + B) PLC/T

Photometric data



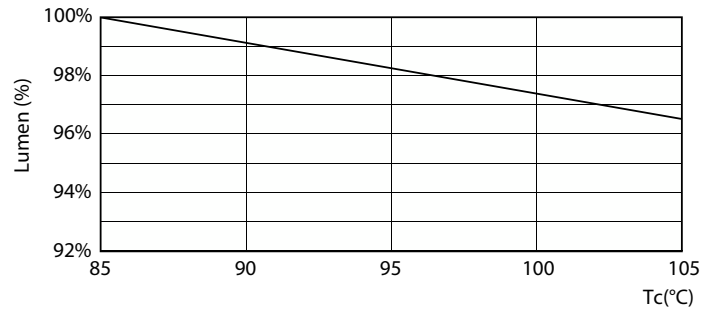
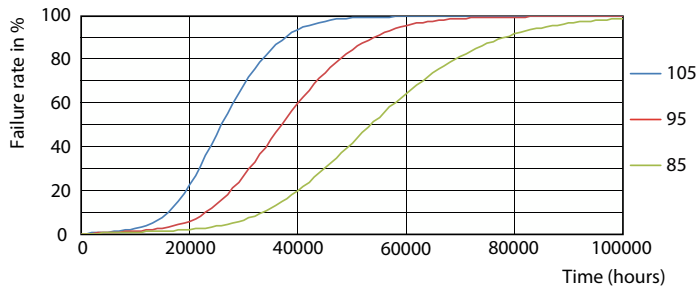
Light Distribution Diagram - 16PL-C/T/COR/42HV-5CCT/FF18/4P/10/1

Lifetime



Life Expectancy Diagram

Life Expectancy Diagram

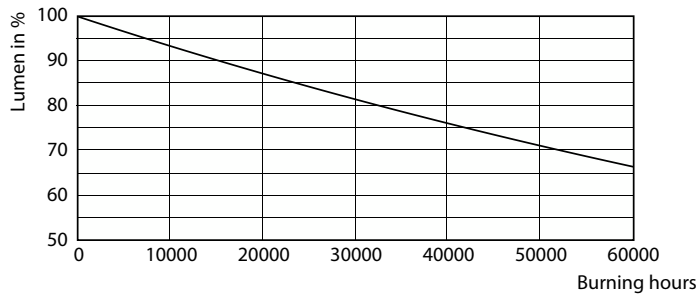


Life Expectancy Diagram

Lumen Maintenance Diagram - 16PL-C/T/COR/42HV-5CCT/FF18/4P/10/1

FlexFit (Hybrid UL Type A + B) PLC/T

Lifetime



Lumen Maintenance Diagram - 16PL-C/T/COR/42HV-5CCT/FF18/4P/10/1

