

BALDOR® • **RELIANCE**

Product Information Packet

VL3503

.5HP,3450RPM,1PH,60HZ,56C,3413L,TEFC,F1

Part Detail							
Revision:	P	Status:	PRD/A	Change #:		Proprietary:	No
Type:	AC	Prod. Type:	3413L	Elec. Spec:	34WGX716	CD Diagram:	CD0001
Enclosure:	TEFC	Mfg Plant:		Mech. Spec:	34H578	Layout:	34LYH578
Frame:	56C	Mounting:	F1	Poles:	02	Created Date:	
Base:	N	Rotation:	R	Insulation:	B	Eff. Date:	07-21-2015
Leads:	6#18					Replaced By:	
Literature:		Elec. Diagram:					

Nameplate NP1256L										
CAT.NO.	VL3503									
SPEC.	34H578X716									
HP	.5									
VOLTS	115/230									
AMP	7/3.5									
RPM	3450									
FRAME	56C				HZ	60			PH	1
SER.F.	1.25		CODE	L	DES	N		CLASS	B	
NEMA-NOM-EFF	66		PF	72						
RATING	40C AMB-CONT									
CC								USABLE AT 208V	4.1	
DE	6203				ODE	6203				
ENCL	TEFC		SN							
	SFA 8/4									

AC Induction Motor Performance Data
Record # 7566 - Typical performance - not guaranteed values

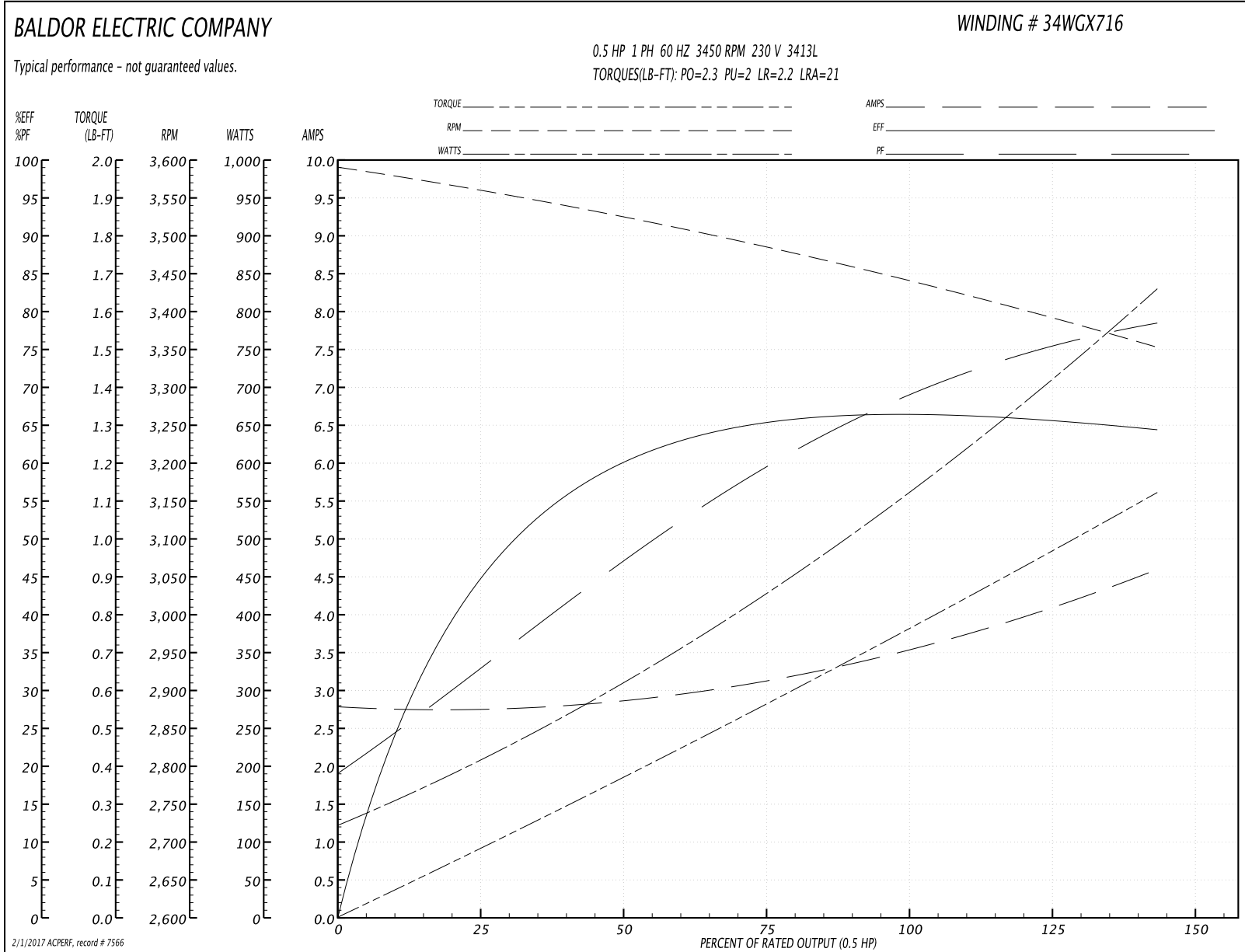
Winding: 34WGX716-R001	Type: 3413L	Enclosure: TEFC
-------------------------------	--------------------	------------------------

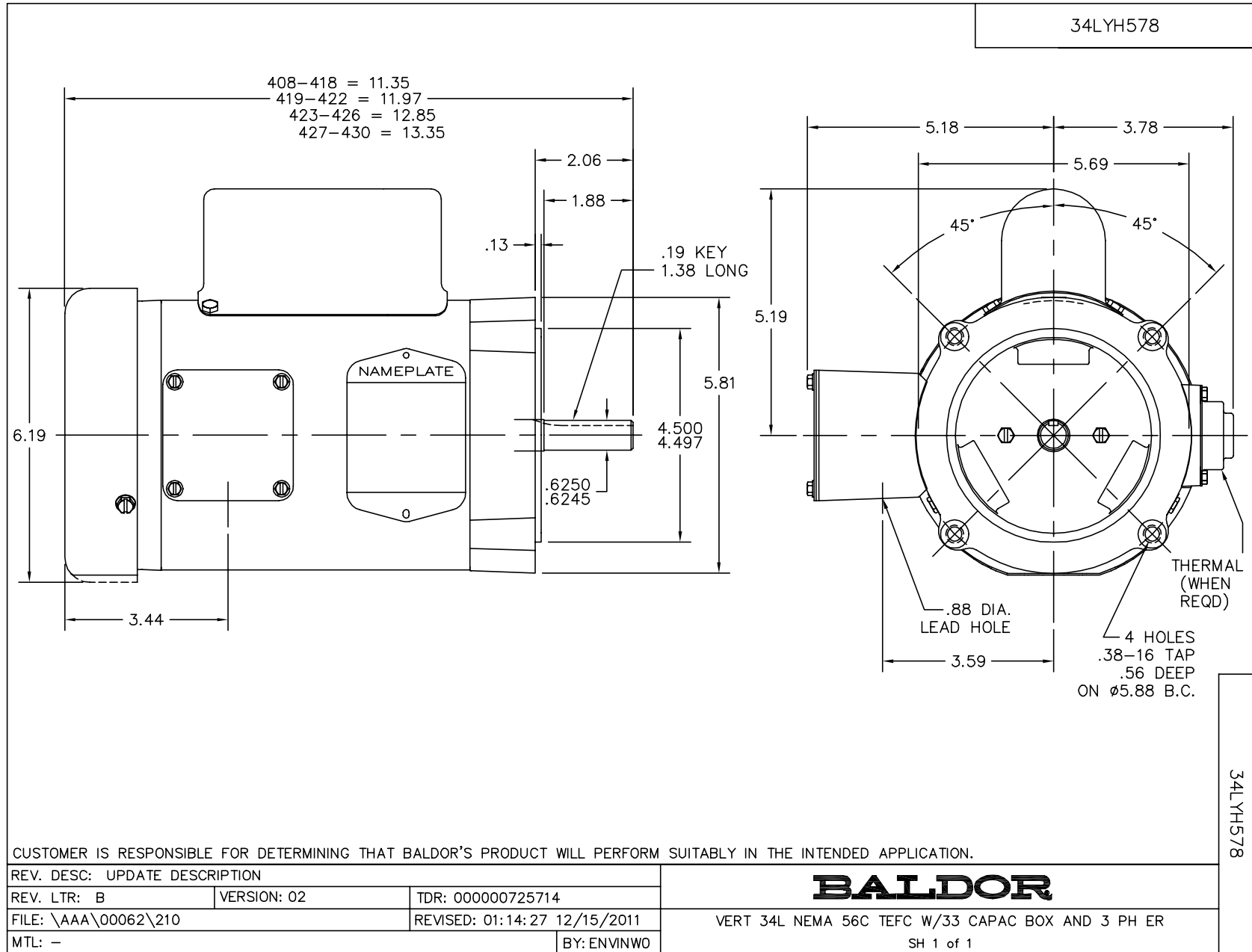
Nameplate Data				230 V, 60 Hz: High Voltage Connection	
Rated Output (HP)	.5			Full Load Torque	0.75 LB-FT
Volts	115/230			Start Configuration	direct on line
Full Load Amps	7/3.5			Breakdown Torque	2.3 LB-FT
R.P.M.	3450			Pull-up Torque	2 LB-FT
Hz	60	Phase	1	Locked-rotor Torque	2.2 LB-FT
NEMA Design Code	N	KVA Code	L	Starting Current	21 A
Service Factor (S.F.)	1.25			No-load Current	2.76 A
NEMA Nom. Eff.	66	Power Factor	72	Line-line Res. @ 25°C	4.163 Ω A Ph 4.624 Ω B Ph
Rating - Duty	40C AMB-CONT			Temp. Rise @ Rated Load	67°C
S.F. Amps	8/4			Temp. Rise @ S.F. Load	84°C

Load Characteristics 230 V, 60 Hz, 0.5 HP

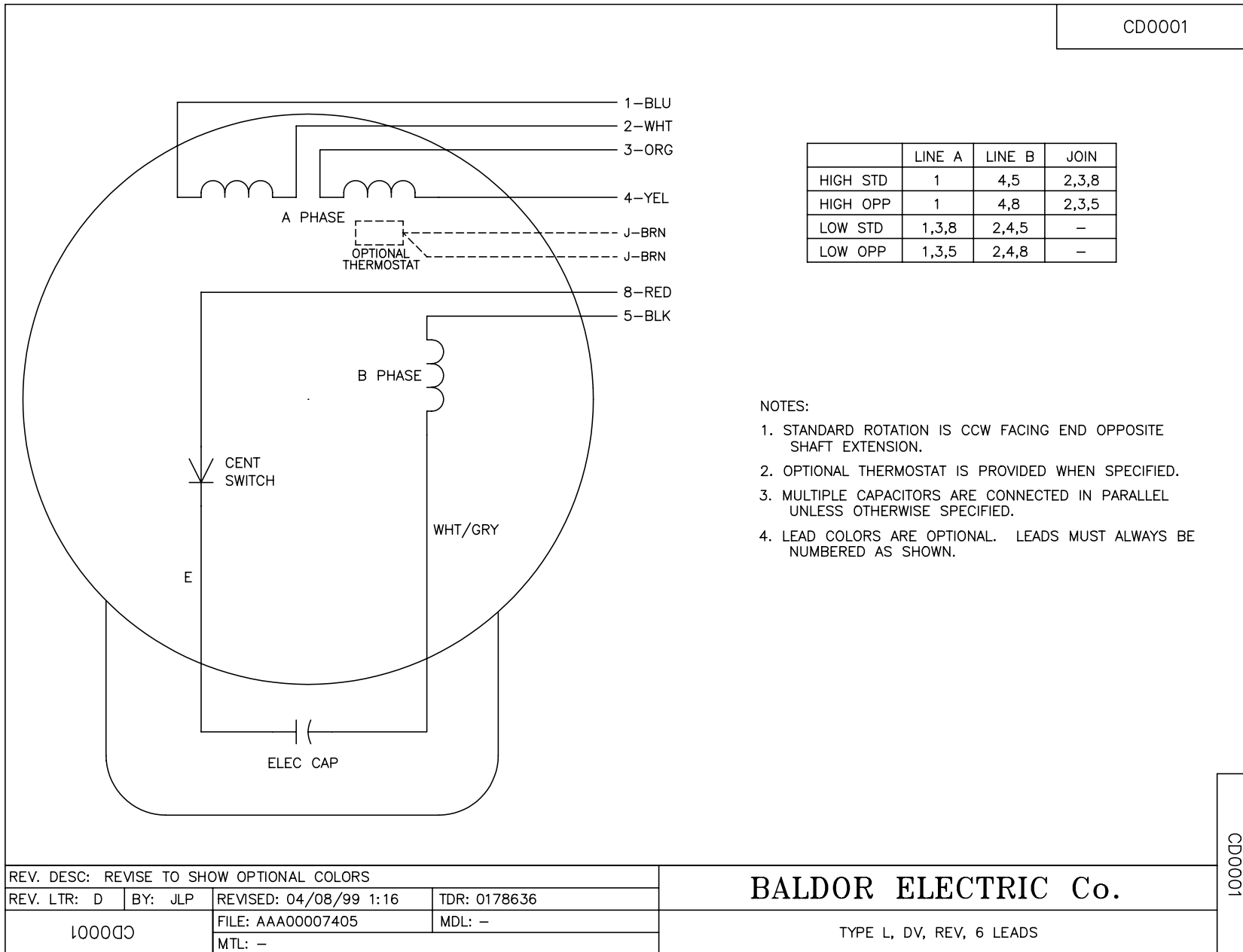
% of Rated Load	25	50	75	100	125	150	S.F.
Power Factor	29	48	60	69	76	78	76
Efficiency	50.7	58.5	64.8	66.2	65.8	64.6	65.8
Speed	3548	3520	3489	3449	3405	3346	3405
Line amperes	2.78	2.88	3.13	3.5	3.95	4.64	3.95

Performance Graph at 230V, 60Hz, 0.5HP Typical performance - Not guaranteed values





CD0001



REV. DESC: REVISE TO SHOW OPTIONAL COLORS			
REV. LTR: D	BY: JLP	REVISED: 04/08/99 1:16	TDR: 0178636
100000		FILE: AAA00007405	MDL: -
		MTL: -	

BALDOR ELECTRIC Co.

TYPE L, DV, REV, 6 LEADS

CD0001