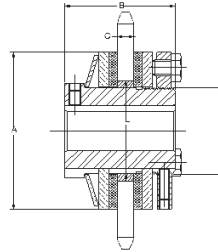
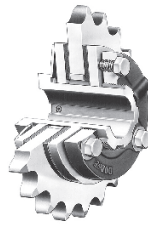


SELECTION/DIMENSIONS



TORQUE-TAMER



TORQUE-TAMER Clutch Dimensions

TORQUE-TAMER Size	Avg. Wt.	A	B	C		K	L	Max. Bore	
				Min.	Max.	+0.003 -0.002 Spline O D	+0.003 -0.000 Spkt. Bore	Std. Key*	Shallow Key*
25	1	2-1/2	1-3/4	1/8	11/32	1.368	1.628	7/8	1
35	2.5	3-1/2	2-7/16	1/8	5/8	1.675	2.003	1-3/16	1-1/4
50	6	5	2-7/8	1/8	5/8	2.625	3.005	1-3/4	2
70	18	7	3-7/8	1/4	1-1/4	3.811	4.194	2-3/4	3

* Keyway to be cut central with threaded spline.

Stock TORQUE-TAMER Clutches: Finished Bores & Reborable

Stock TORQUE-TAMER Clutches w/Finished Bore & Keyway

Reborable TORQUE-TAMER Clutches

TORQUE-TAMER Size	Finished Bore		Reborable			
	Bore	Part Number	Bore (No KW & 1 ▲)	Part Number	Max Bore	
					Standard KW*	Shallow KW*
25	1/2	096034	1/2	096033	7/8	1
	5/8	096035				
	3/4	096036				
	7/8	096037				
35	3/4	096008	3/4	096010	1-3/16	1-1/4
	7/8	096009				
	1	096011				
50	1	096014	1	096017	1-3/4	2
	1-1/8	096015				
	1-3/16	096018				
	1-1/4	096019				
	1-3/8	096020				
	1-7/16	096021				
	1-1/2	096022				
1-5/8	096023					
70	1-7/16	096028	1-3/8	096027	2-3/4	3
	1-1/2	096029				
	1-3/4	096030				
	1-15/16	096031				
	2	096032				
	2-3/16	096038				
2-7/16	096016					

▲ With standard Keyway and (1) Setscrew.

* Keyway to be cut central with threaded spline. For standard KW sizes refer to page PT1-74.

FEATURES/BENEFITS PAGE PT5-2	SPECIFICATION/HOW TO ORDER PAGE PT5-3		
---------------------------------	--	--	--