



## FEATURES & SPECIFICATIONS

### INTENDED USE

Intended for low to medium mounting heights where dust, dirt, humidity, moisture, cold ambient spaces or corrosive elements are present. Ideal for canopies, dock areas, wastewater treatment, refrigerated areas, food processing and other non-hazardous environments.

### CONSTRUCTION

Housing formed from impact resistant, UV stabilized, fiberglass reinforced polyester with cold-rolled steel enclosed wireway. Poured in gasketing provides a seal between housing and diffuser. Captive, corrosion-resistant cam-action latches secure the diffuser; six on 4' units, and ten on 8' units. Stainless steel latches available.

### FINISH

Painted parts pretreated with a five-stage iron-phosphate process to ensure superior paint adhesion and corrosion resistance, then finished with a high-gloss, baked white enamel.

### OPTICAL SYSTEM

Acrylic diffuser with a stippled interior surface to spread lamp image. High-impact diffuser optional.

### ELECTRICAL SYSTEM

Thermally protected, resetting, Class P, HPF, non-PCB, UL Listed and CSA Certified ballast is standard. Sound rating depends on lamp/ballast combination.

AWM, TFN, THHN wire throughout, rated for required temperatures.

### INSTALLATION

For unit or row installations, surface (ceiling or wall) or suspended mounting.

### LISTING

120V and 277V are UL Listed and CSA Certified (standard). 347V is CSA Certified (see Options). NOM Certified (see Options). Suitable for wet (DMW) or damp (DM) locations.

### WARRANTY

Guaranteed for one year against mechanical defects in manufacture.

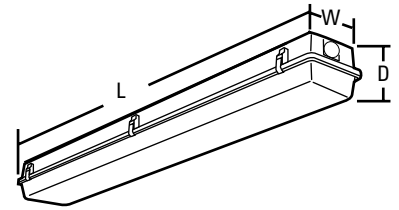
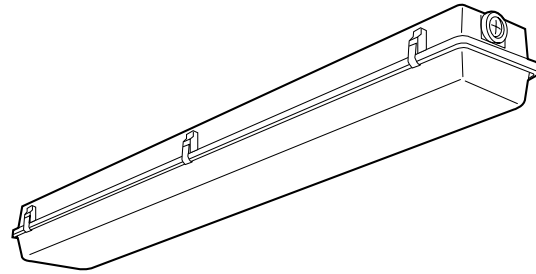
Catalog Number	
Notes	Type

### Enclosed and Gasketed Industrial

# DM/DMW

## High Output

4' or 8' length  
1 or 2 lamps



### Specifications

Length: 50" (1270)

98" (2489)

Width: 8-1/8" (206)

Fixture Depth: 5-5/8" (143)

All dimensions are inches (millimeters).  
Specifications subject to change  
without notice.

## ORDERING INFORMATION

Choose the boldface catalog nomenclature that best suits your needs and write it on the appropriate line. Order accessories as separate catalog number.

Example: **DMW 2 96HO 120 ES CW20**

Series	Number of lamps	Lamp type <sup>1</sup>	Diffuser	Voltage	Options
<b>DM</b> Damp location		<b>48HO</b> 60W 800mA (48")	(blank) Acrylic (15% DR)	<b>120</b>	<b>ES</b> Energy-saving ballasts
<b>DMW</b> Wet location	<b>1, 2</b>	<b>96HO</b> 110W 800mA (96")	<b>AR</b> High-impact acrylic (50% DR)	<b>277</b>	<b>CW20</b> Cold-weather ballasts, -20°F starting
For tandem double-length unit, add prefix T. Example: <b>TDMW</b>	Not included	<b>96T8HO</b> 86W T8 380mA (96")	<b>DP</b> Deep acrylic <sup>2</sup>	<b>347</b>	<b>EL6DW</b> Emergency battery pack (nominal 600 lumens)
			<b>ARDP</b> Deep high-impact acrylic <sup>2</sup>	Others available	<b>EL14DW</b> Emergency battery pack (nominal 1400 lumens)

### Accessories

Order as separate catalog numbers.

**BCD** Bracket for hanger chain mounting. Two per package.

**HC36** Chain hangers (1 pair, 36" long). Requires BCD.

**WLF** Wet location fittings (1 pair, not installed).

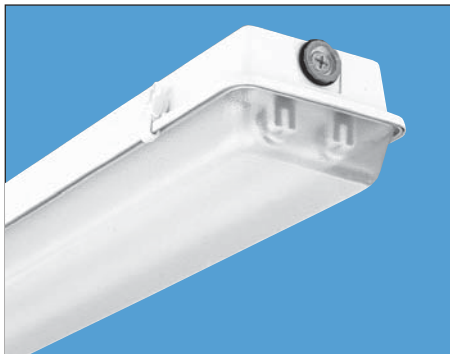
### Notes

1 HO ballasts not recommended for use in ambient temperatures exceeding 40° F.

2 Standard on 8' fixture.

3 Available with DMW only.

# DM DMW



## Enclosed Fiberglass Housing

### Intended Use

For low to medium mounting heights and harsh environments where dust, dirt, humidity or moisture is present. Ideal for canopies, shipping docks, refrigerated areas, food processing and other non-hazardous environments.

### Features

Impact-resistant, UV-stabilized, reinforced polyester fiberglass housing. Shatter-resistant 15% DR acrylic diffuser standard, high impact 50% DR available. Poured-in gasketing provides a continuous seal between housing and diffuser. Captive, corrosion-resistant, cam-action latches secure the diffuser. Stainless steel (STSL) latches are also available.

**Ballast** – Thermally protected, resetting, Class P, HPF, non-PCB, UL listed, CSA certified ballast is standard. Sound rating depends on lamp/ballast combination.

**Wiring and Electrical** – AWM, TFN or THHN wire used throughout, rated for required temperatures.

**Mounting** – For unit or row installations, surface (ceiling or wall) or suspended mounting.

**Listings** – 120V, 277V and MVOLT are UL Listed and CSA Certified (standard). See Options for 347V and NOM Certified. DMW is listed for wet locations.

## Ordering Information

Example: **DM 2 96T8 120 GEB**

Series	Lamp type	Diffuser type	Voltage	Options/Accessories <sup>3,4</sup>
<b>DM</b> Damp location <b>DMW</b> Wet location <small>For tandem double-length unit, add prefix T. Example: <b>TDM</b></small>	<b>32</b> 32W T8 (48") <b>40</b> 40W T12 (48") <b>48</b> 38W Slimline (48") <b>48HO</b> 60W 800mA (48") <b>96</b> 75W Slimline (96") <b>96HO</b> 110W 800mA (96") <b>96T8</b> 59W T8 Slimline (96") <b>96T8HO</b> 86W T8 380mA (96")	(blank) Acrylic, 15% DR <b>AR</b> High-impact acrylic, 50% DR <b>DP</b> Deep acrylic, 15% DR <sup>2</sup> <b>ARDP</b> Deep high-impact acrylic, 50% DR <sup>2</sup>	<b>120</b> <b>277</b> <b>347</b> <b>MVOLT*</b> <small>Others available. * 120-277V. Must specify GEB10IS.</small>	<b>1/3</b> One 3-lamp ballast <b>1/4</b> One 4-lamp ballast <b>GEB</b> Electronic ballast, ≤20% THD <b>GEB10IS</b> T8 electronic ballast, ≤10% THD, instant start <b>GEB10RS</b> T8 electronic ballast, ≤10% THD, rapid start <b>BCD</b> Mounting bracket to chain-hang DM/DMW (2 per package, excludes chain) <sup>4</sup> <b>HC</b> Wire hook and 36" chain set (2 per package) <sup>4</sup> <b>WLF</b> Field-installable wet location fittings to stem-hang DMW on ½" rigid conduit (2 per package). For factory-installed fittings on top, order WLF as an option. <b>CSA</b> CSA Certified (347V only) <b>NOM</b> NOM Certified

Number of lamps

**1, 2, 3<sup>1</sup>**

Not included.

### Availability and Dimensions

Series	Lamps per cross section	Lamps per fixture	Lamp type	Width in. (cm)	Depth in. (cm)	Length in. (cm)
DM, DMW	1, 2, 3 <sup>1</sup>	1, 2, 3	32, 40	7 <sup>5</sup> / <sub>8</sub> (18.4)	4 <sup>3</sup> / <sub>4</sub> (9.5)	50 (127.0)
DM, DMW	1, 2	1, 2	48, 48HO, 48T8HO	7 <sup>5</sup> / <sub>8</sub> (18.4)	5 <sup>5</sup> / <sub>8</sub> (13.3)	50 (127.0)
DM, DMW (DP or ARDP)	1, 2, 3 <sup>1</sup>	1, 2, 3	32, 40	7 <sup>5</sup> / <sub>8</sub> (18.4)	5 <sup>5</sup> / <sub>8</sub> (13.3)	50 (127.0)
TDM, TDMW	1, 2	2, 4	32, 40, 48, 48HO, 48T8HO	7 <sup>5</sup> / <sub>8</sub> (18.4)	5 <sup>5</sup> / <sub>8</sub> (13.3)	98 (248.9)
DM, DMW	1, 2	1, 2	96, 96HO, 96T8, 96T8HO	7 <sup>5</sup> / <sub>8</sub> (18.4)	5 <sup>5</sup> / <sub>8</sub> (13.3)	98 (248.9)

Drawings for dimensional detail only.  
May not represent actual mechanical configuration.  
Dimensions are shown in inches (centimeters).



### NOTES:

- 1 3-lamp models only available with T8 lamp source.
- 2 Deep lens is standard on 4' slimline, HO (800mA) and 8' fixtures. To match deep appearance on 4' rapid start, order **DP** or **ARDP** option.
- 3 Cold weather ballasts (**CW** or **CW20**) for use at 40°F ambient temperature or below.
- 4 Please order accessories as separate catalog numbers.

# EFT

## Tough Task™

### Intended Use

For low to medium mounting heights in demanding applications including hosedown and food processing areas requiring ease of cleanability, compliance to FDA/USDA requirements and NSF splash-zone certification. Applications include meat/poultry/beverage processing, cosmetics and pharmaceuticals.

### Features

Totally enclosed fixture with tubular acrylic, high-impact lens surrounding an aluminum channel. Channel is finished with a high-gloss, baked white polymeric powder.

Stainless steel end caps with silicone o-ring closed cell gaskets close off fixture ends.

High-impact, clear DR acrylic lens; .125" nominal thickness.

Two 7" stainless steel aircraft cables and s-hooks included.

Fixture supplied with 5' power cord.

4' and 8' lengths available.

Listings – 120V, 277V and MVOLT are UL Listed and CUL Listed for wet locations, maximum 40°C ambient temperature (standard). 347V is CUL Listed to Canadian safety standards (see Options). IP65 rated for protection against ingress of water and contaminants. NSF International certified splash-zone and meets FDA/USDA guidelines (standard).



## Ordering Information

Example: EFT 2 32 120 GEB

Series	Number of lamps	Wattage	Voltage	Options
<b>EFT</b>	<b>2</b> Not included.	<b>32</b> 32W T8 (48") <b>40</b> 40W T12 (48") <b>48HO</b> 60W 800mA (48") <b>48T8HO</b> 44W T8 (48") <b>96HO</b> 110W 800mA (96") <b>96T8HO</b> 86W T8 380mA (96")	<b>120, 277, 347, MVOLT*</b> <small>* 120-277V. Must specify GEB10IS.</small>	Shipped installed in fixture <b>CW20</b> Cold weather ballast -20°F <sup>1</sup> <b>GEB</b> Electronic ballast, ≤20% THD <b>GEB10IS</b> T8 electronic ballast, ≤10% THD, instant-start <b>GEB10RS</b> T8 electronic ballast, ≤10% THD, rapid-start <b>ELDW</b> Emergency lighting wet location, 300 lumens <b>EL5DW</b> Emergency lighting wet location, 500 lumens <b>EL6DW</b> Emergency lighting wet location, 600 lumens <b>EL14DW</b> Emergency lighting wet location, 1400 lumens <b>GLR</b> Internal fast-blow fusing <b>CS88</b> Brad Harrison 16/3 Cord & Plug Set 5' <b>CSA</b> Listed and labeled to comply with Canadian Standards (347 only)

NOTES:  
1 T12HO only.

### Availability and Dimensions

Series	Number of lamps	Lamp type	Width in. (cm)	Depth in. (cm)	Length in. (cm)
EFT	2	32, 40, 48HO 48T8HO	6½ (16.5)	7¼ (18.4)	50 (127.0)
EFT	2	96HO, 96T8HO	6½ (16.5)	7¼ (18.4)	98 (248.9)

