

D'versiBIT® System

D'versiBIT® Shipping Tubes

Cat./ UPC No.	Description
99104	54" x 1" Shipping Tube B with End. (Sold only in minimum quantity of 6 in same length.)
99105	72" x 1" Shipping Tube B with End. (Sold only in minimum quantity of 6 in same length.)

Type A, Auger



- Wood-type auger bit with screw point.
- Pulls itself through wood, avoids walking or skidding.
- Excellent for drilling in soft woods or through thin sections.
- Slow back-taper allows for easy retrieval.

Type B, Combination with Screw Point



- For aggressive chip removal in many types of woods.
- Screw point for easy starting and pulling through wood.
- With screw point removed, this bit can be ground to function like a standard combination bit.

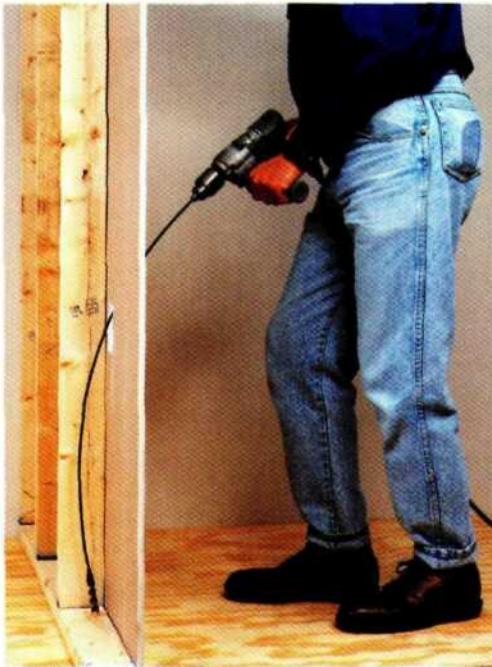
Type C, Combination



- For drilling in tough woods and thick obstacles.
- Drilling speed relative to pressure applied.
- Chips can be brought easily out of the hole.

Bit Dia. In. (mm)	Shaft Length		Shaft Dia.		Type A Auger		Type B Combination with Screw Point		Type C Combination	
	In.	mm	In.	mm	Cat. No.	UPC No.	Cat. No.	UPC No.	Cat. No.	UPC No.
1/4" (6.4 mm)	36	914.4	5/32	4.0	—	—	—	—	04-03-36C	38112
Blue	54	1371.6	5/32	4.0	—	—	—	—	04-03-54C	38113
Black	72	1828.8	5/32	4.0	—	—	—	—	04-03-72C	38114
3/8" (9.5 mm)	36	914.4	3/16	4.8	06-03-36A	38067	06-03-36B	38092	06-03-36C	38117
Blue	54	1371.6	3/16	4.8	06-03-54A	38068	06-03-54B	38093	06-03-54C	38118
Black	72	1828.8	3/16	4.8	06-03-72A	38069	06-03-72B	38094	06-03-72C	38119
1/2" (12.7 mm)	36	914.4	3/16	4.8	08-03-36A	38072	08-03-36B	38097	08-03-36C	38122
Green	54	1371.6	3/16	4.8	08-03-54A	38073	08-03-54B	38098	08-03-54C	38123
Orange	72	1828.8	3/16	4.8	08-03-72A	38074	08-03-72B	38099	08-03-72C	38124
9/16" (14.3 mm)	36	914.4	3/16	4.8	09-03-36A	38077	09-03-36B	38102	—	—
Blue	54	1371.6	3/16	4.8	09-03-54A	38078	09-03-54B	38103	09-03-54C	38128
Black	72	1828.8	3/16	4.8	09-03-72A	38079	09-03-72B	38104	09-03-72C	38129
3/4" (19.1 mm)	36	914.4	1/4	6.4	12-04-36A	38082	—	—	—	—
Red	54	1371.6	1/4	6.4	12-04-54A	38083	—	—	12-04-54C	38133
White	72	1828.8	1/4	6.4	12-04-72A	38084	—	—	12-04-72C	38134
1" (25.4 mm)	36	914.4	1/4	6.4	16-04-36A	38087	—	—	—	—
Blue	54	1371.6	1/4	6.4	16-04-54A	38088	—	—	—	—
Black	72	1828.8	1/4	6.4	16-04-72A	38089	—	—	—	—

D'versiBIT® System



A new twist to an old problem.

These flexible steel drill bits are the right tools for installing wire or cable inside existing walls.

It bends to meet your needs!

Fishing wire or cable through existing walls used to be frustrating and time-consuming, but the D'versiBIT® has made it as simple as bowing the spring steel shaft in the direction you want to drill and turning on the power. Proven in the field to deliver accurate and professional results in many applications. Bits range from 1/4" to 1" (6.4 to 25.4 mm) in diameter and in shaft length from 12" to 72" (304.8 to 1828.8 mm).

The D'versiBIT® System makes it possible to easily accomplish even complex installations. This patented system attaches a quality drill bit to a long flexible spring steel shaft. When used with the Placement Tool, this flexibility makes it possible to easily manipulate the bit within walls. After drilling, attach a D'versiGRIP to the hole in the drill and pull wire or cable back through the wall.



D'versiBIT® Shipping Tubes

Cat./UPC No.	Description
99104	54" x 1" Shipping Tube B with End. (Sold only in minimum quantity of 6 in same length.)
99105	72" x 1" Shipping Tube B with End. (Sold only in minimum quantity of 6 in same length.)

Type M, Masonry



- For drilling in masonry walls and through plaster.
- Recommended for use with Abrasion Shield to reduce friction and abrasion as the shaft turns against masonry.

Type HS High Speed Steel



- Designed for aggressive cutting in all types of wood.
- High speed bit head ensures longer life.

Bit Diameter In. (mm) Color Code	Shaft Length		Shaft Dia.		Type M Masonry		Type HS High Speed Steel	
	In.	mm	In.	mm	Cat. No.	UPC No.	Cat. No.	UPC No.
1/4" (6.4 mm) Blue	12	304.8	3/16	4.8	—	—	1412D	39913
	18	457.2	3/16	4.8	—	—	1418D	38744
	24	609.6	3/16	4.8	—	—	1424D	38745
	36	914.4	3/16	4.8	—	—	1436D	38746
	12	304.8	3/16	4.8	—	—	3812D	39914
3/8" (9.5 mm) Black	18	457.2	3/16	4.8	06-03-18M	38665	3818D	38749
	24	609.6	3/16	4.8	—	—	3824D	38750
	36	914.4	3/16	4.8	—	—	3836D	38751
	54	1371.6	3/16	4.8	06-03-54M	38668	3858D	38752
	72	1828.8	3/16	4.8	—	—	3872D	38753
1/2" (12.7 mm) Green	36	914.4	3/16	4.8	—	—	1236D	38756
	54	1371.6	3/16	4.8	—	—	1258D	38757
	72	1828.8	3/16	4.8	—	—	1272D	38758
	54	1371.6	1/4	6.4	08-04-54M	38678	—	—